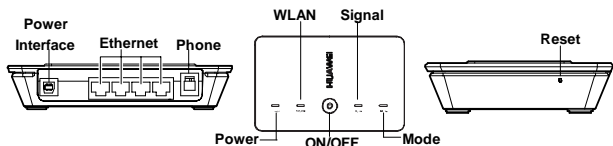




## HUAWEI E960 HSDPA Wireless Gateway Quick Start

The HUAWEI E960 supports HSDPA/WCDMA 2100, GSM/GPRS/EDGE 1900/1800/900/850, and network auto-switch. With the E960, you can experience wireless gateway and USB modem at any time and any place.

### E960 Appearance



- **Power Interface:** When connected with the power adapter, the E960 functions as a wireless gateway. When connected to the PC with a USB data cable, the E960 functions as a USB modem.
- **Ethernet:** Insert an Ethernet cable connected to the PC or other network equipments.
- **Phone:** Insert a phone cable connected with a telephone to realize the voice service.
- **Power:** Power indicator. When it is in yellow, the charge is finished.
- **WLAN:** WLAN indicator. If it is steady on and in yellow, the WLAN is enabled. If it is blinking, data is transmitting.
- **ON/OFF:** Press and hold to power on or off the E960.
- **Signal:** Signal strength indicator. The following table shows the status of the signal strength indicator:

Status	Description	Status	Description
Fast blinking in red	No SIM card or unverified PIN code	Steady on in yellow	Signal strength in level two or three (middle)
Steady on in red	Signal strength in level one (weak)	Steady on in green	Signal strength in level four or five (strong)

- **Mode:** The network mode indicator. The following table shows the status of the network mode indicator:

Status	Description	Status	Description
Double blinking in green	Searching the network or no network	Blinking in blue	Normal GPRS/EDGE network
Steady on and in green	GPRS/EDGE data service connected	Fast blinking in green	Downloading the upgrade mode
Blinking in blue	Normal WCDMA network	Indicator off	Off
Steady on in blue	WCDMA data service connected	Steady on in cyan	HSDPA data service connected

- **Reset:** Reset button. On the side of the E960. Press and hold it for more than five seconds to restore the factory defaults.

### PC Configuration Requirements

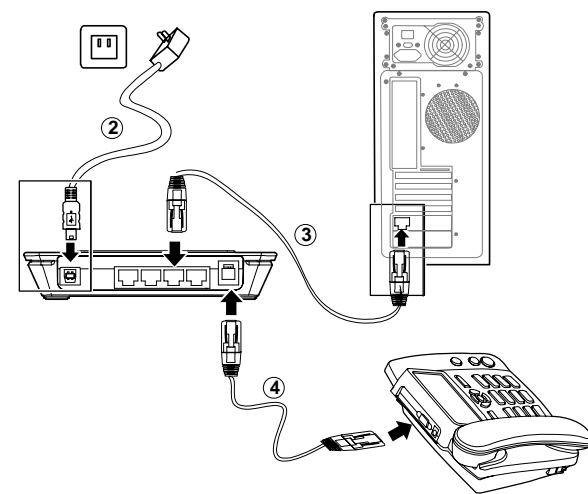
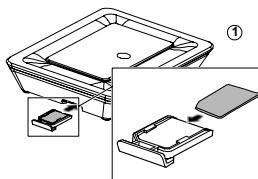
The recommended PC configurations for using the E960 are as follows:

- CPU: Pentium 500 MHz or above
- Memory: 128 MB RAM or above
- Hard disk: 50 MB available space
- Operating System: Windows 2000, Windows XP, or Windows Vista
- LCD resolution: 800\*600 or above, recommended 1024\*768.
- Interface: standard USB interface
- Internet Explorer: IE6.0 or above, Firefox 1.5 or above, Netscape 8.0 or above

**Note:** If the configurations of the PC are lower than the recommended, the performance of the E960 may be weakened.

### Step 1: Insert the SIM Card

Insert the SIM card into the socket with the golden contact facing upward. Insert the card socket into the E960.



### Step 2: Install the Power Adapter

Plug in the USB end of the power adapter to the power interface of the E960, and plug in the power plug to the power socket. Please use the E960 compatible power adapter; otherwise, the E960 can be damaged.

### Step 3: Connect to the PC

The Ethernet cable cannot be longer than 100 meters. For better effect, please use the shielded cable.

### Step 4: Connect to the Telephone

The telephone cable cannot be longer than three meters, and the telephone can be connected with three extensions.

### Step 5: Log in to the Wireless Gateway Web Management

1. Open the Internet Explorer, and then enter the default web address (192.168.1.1) of the E960 in the address bar.
2. In the **WIRELESS GATEWAY LOGIN** page, select the user type, enter the password, and then click **Login**.

**Admin:** Have the rights the view and modify the configurations, and the default password is **admin**;

**User:** Only view the basic information, and the default password is **user**.

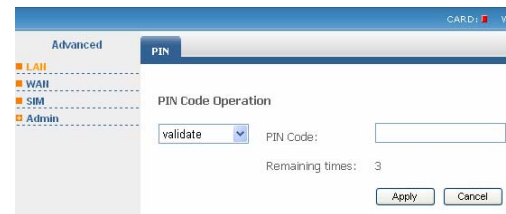
Only one user can log in to the E960 management page at one time, which is to prevent the configuration conflict.



3. If you are prompted to enter the PIN code, you need to enter the correct PIN code, and then click **Apply**.

**Note:**

- If the correct PIN code or PUK code is invalid, you cannot use the network-related services.
- Please consult your service provider about whether to use SIM/USIM card.
- Your service provider provides the SIM/USIM card. For more information about SIM/USIM card, please consult your service provider.



### Step 6: Making the First Call

When the PIN code is verified, you can use the telephone to make a voice call by lifting the handset and dialing the number.

## Step 7: Connect to the Internet

1. Click **Advanced**, select **WAN**, and then click **Connection**. Enter the parameters and click **Save**. The system automatically configures the new parameters.

Advanced Basic Connection Connect&band Network Setting

LAN WAN SIM Admin

UMTS connect settings

Profile Setting: [nao0ao]

Profile Name: [nao0ao]

Dial-Up Number: [\*98#]

PPP User Name:

PPP Password:

APN:

Dynamic  static [hw3g]

IP Address:

Dynamic  static

Delete Save Cancel

2. Click **Basic**, select the value in **Profile Setting** and **PPP Connection**, and then click **Apply**.

Advanced Basic Connection Connect&band Network Setting

LAN WAN SIM Admin

WAN Basic Setting

Profile Setting: [nao0ao]

PPP Connection: [Auto]

PPP Max Idle Time(s): [600]

PPP MTU(B): [1500]

PPP Max Dial Time: [120] sec

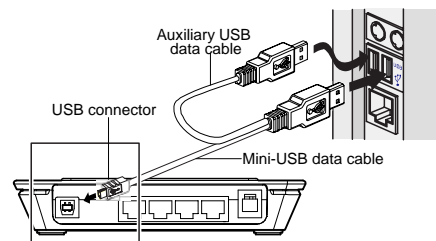
connect Apply Cancel

3. If the **PPP Connection** is **Manual**, you need to click **connect** to connect the network. Otherwise, the system automatically connects the network.
4. If the mode indicator of the E960 blinks, the connection is successful and you are online.

## Using the USB Modem Function Quickly

In USB modem mode, you can perform wireless online, SMS, and phone book. However, the gateway functions cannot be used, such as voice service and dial-up through the Ethernet.

1. Press and hold to power off the E960.
2. Unplug the USB end of the power adapter from the E960.
3. Connect the E960 and PC with a compatible USB data cable. The sketch map for the data cable is shown in the following picture:



**Note:** The auxiliary USB data cable is for additional power supply. Ensure that all connectors of the USB data cable are plugged in the corresponding interfaces.

4. The system automatically recognizes the new hardware, and displays on the lower right of the desktop. The E960 and the PC are connected successfully.
5. After connecting the E960 and the PC, the Mobile Partner installation program of the E960 starts automatically. You can follow the installation wizard to operate.

**Note:** If the program is not started, you can enter the optical drive path of the E960, double-click the disk icon or right-click it, and then select open. Double-click the **AutoRun.exe** file, the installation program starts. Do not plug or unplug the E960 in the installation process.

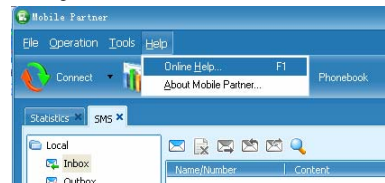
6. After successful installation, the management program starts automatically, and the shortcut icon is displayed on the desktop.
7. Enter the Mobile Partner, and you can perform the applications such as wireless accessing the Internet, SMS, email, and phone book.

## Using the User Guide of the E960

The electrical version of the E960 User Guide is compressed in the installation program of the Mobile Partner.

You can view the *E960 Wireless Gateway User Guide* and *Mobile Partner User Guide* through the Online Help of the Mobile Partner, or in the optical drive path of the E960.

1. Double-click to enter the main interface.
2. Choose **Help > Online Help**, you can use the E960 user guide, as shown in the following figure.



### Huawei Technologies Co., Ltd.

Address: Huawei Industrial Base, Bantian, Longgang, Shenzhen 518129, People's Republic of China  
Tel: +86-755-28560000 Global Hotline: +86-755-28560808 E-mail: mobile@huawei.com

Website: www.huawei.com

### Copyright © 2007 Huawei Technologies Co., Ltd.



HUAWEI, HUAWEI are trademarks of Huawei Technologies Co., Ltd.

The figure is for your reference only

The information in this manual is subject to change without notice. Every effort has been made in the preparation of this manual to ensure accuracy of the contents, but all statements, information, and recommendations in this manual do not constitute the warranty of any kind, express or implied.

## Free Manuals Download Website

<http://myh66.com>

<http://usermanuals.us>

<http://www.somanuals.com>

<http://www.4manuals.cc>

<http://www.manual-lib.com>

<http://www.404manual.com>

<http://www.luxmanual.com>

<http://aubethermostatmanual.com>

Golf course search by state

<http://golfingnear.com>

Email search by domain

<http://emailbydomain.com>

Auto manuals search

<http://auto.somanuals.com>

TV manuals search

<http://tv.somanuals.com>