

HG630a Home Gateway

User Guide

HUAWEI TECHNOLOGIES CO., LTD.



Download from Www.Somanuals.com. All Manuals Search And Download.



HG630a Home Gateway
V100R001

User Guide

Issue 01
Date 2012-07-24
Part Number 202517

Huawei Technologies Co., Ltd. provides customers with comprehensive technical support and service. Please feel free to contact our local office or company headquarters.

Huawei Technologies Co., Ltd.

Address: Huawei Industrial Base
 Bantian, Longgang
 Shenzhen 518129
 People's Republic of China

Website: <http://www.huawei.com>

Email: mobile@huawei.com

Copyright © Huawei Technologies Co., Ltd. 2012. All rights reserved.

No part of this document may be reproduced or transmitted in any form or by any means without prior written consent of Huawei Technologies Co., Ltd.

The product described in this manual may include copyrighted software of Huawei Technologies Co., Ltd and possible licensors. Customers shall not in any manner reproduce, distribute, modify, decompile, disassemble, decrypt, extract, reverse engineer, lease, assign, or sublicense the said software, unless such restrictions are prohibited by applicable laws or such actions are approved by respective copyright holders under licenses.

Trademarks and Permissions



HUAWEI, **HUAWEI**, and



are trademarks or registered trademarks of Huawei Technologies Co., Ltd.

Other trademarks, product, service and company names mentioned are the property of their respective owners.

Notice

Some features of the product and its accessories described herein rely on the software installed, capacities and settings of local network, and may not be activated or may be limited by local network operators or network service providers. Thus the descriptions herein may not exactly match the product or its accessories you purchase.

Huawei Technologies Co., Ltd reserves the right to change or modify any information or specifications contained in this manual without prior notice or obligation.

NO WARRANTY

THE CONTENTS OF THIS MANUAL ARE PROVIDED "AS IS". EXCEPT AS REQUIRED BY APPLICABLE LAWS, NO WARRANTIES OF ANY KIND, EITHER EXPRESS OR IMPLIED, INCLUDING BUT NOT LIMITED TO, THE IMPLIED WARRANTIES OF MERCHANTABILITY AND FITNESS FOR A PARTICULAR PURPOSE, ARE MADE IN RELATION TO THE ACCURACY, RELIABILITY OR CONTENTS OF THIS MANUAL.

TO THE MAXIMUM EXTENT PERMITTED BY APPLICABLE LAW, IN NO CASE SHALL HUAWEI TECHNOLOGIES CO., LTD BE LIABLE FOR ANY SPECIAL, INCIDENTAL, INDIRECT, OR CONSEQUENTIAL DAMAGES, OR LOST PROFITS, BUSINESS, REVENUE, DATA, GOODWILL OR ANTICIPATED SAVINGS.

Import and Export Regulations

Customers shall comply with all applicable export or import laws and regulations and will obtain all necessary governmental permits and licenses in order to export, re-export or import the product mentioned in this manual including the software and technical data therein.

Contents

1 Connecting the Cables and Getting Started	1
1.1 Connecting Cables Using the DSL Port	1
1.2 Connecting Cables Using the WAN Port	3
1.3 Connecting Cables Using the USB Port	4
2 Setting Network Access Parameters	5
2.1 Logging In to the Web-based Configuration Utility.....	5
2.2 Configuring a Dial-up Connection for Internet Access.....	6
3 Setting Up a Wireless Connection.....	7
3.1 Setting Up a Wireless Connection With the WPS Button	7
3.2 Setting Up a Wireless Connection Manually.....	8
4 Maintenance Guide	10
4.1 Changing the User Name and Password for the Web-Based Configuration Utility.....	10
4.2 Enabling or Disabling the Wireless Network Function	10
4.3 Changing the Wireless Network Name and Password.....	11
4.4 Changing the IP Address Used to Log In to the Web-based Configuration Utility.....	12
4.5 Restoring Default Settings	13
4.6 Configuring the Firewall	13
5 Applications Guide	14
5.1 Accessing a Portable Storage Device Using the FTP Client....	14
5.2 Allowing Internet Users to Access an Internal Resource Server	15
6 FAQs.....	17
7 Appendix.....	21

7.1 Indicators	21
7.2 Ports and Buttons.....	24
7.3 Default Settings	26
7.4 Technical Specifications	26

1 Connecting the Cables and Getting Started

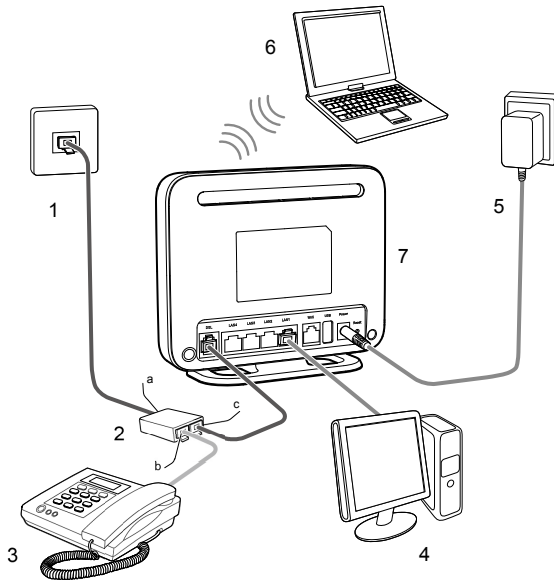
Thank you for purchasing the HG630a Home Gateway (hereinafter referred to as the HG630a).

You can go online using the DSL, Ethernet, and USB modem services. However, you can only use one type of service at one time. The default way of going online is using the DSL service, though you can go online using the USB modem service when you cannot access the network using the DSL or Ethernet services.

1.1 Connecting Cables Using the DSL Port

Connecting Cables

If there is at least one available telephone wall jack in your home, you can go online using the DSL service.



- | | | |
|------------------------|------------------|--------------------|
| 1. Telephone wall jack | 2. Splitter | 3. Telephone |
| 4. Desktop computer | 5. Power adapter | 6. Laptop computer |
| 7. HG630a | | |
| a. LINE port | b. PHONE port | c. MODEM port |

Getting Started

After connecting the cables, press the **On/Off** button on the side panel to power on the HG630a.

After you power on the HG630a, the **Power** indicator turns on. The **DSL** indicator lights up and starts blinking. This indicates that the **DSL** port activation is in progress. The blinking may last less than 3 minutes. When the **DSL** indicator stops blinking and remains on, the HG630a is working properly.

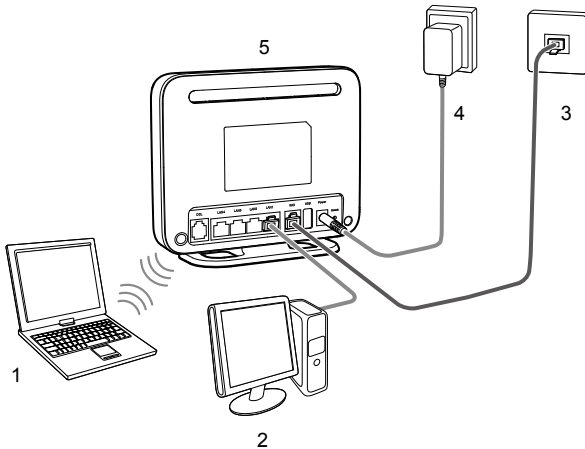


To power off the HG630a, press the **On/Off** button on the side panel, and then unplug the power adapter.

1.2 Connecting Cables Using the WAN Port

Connecting Cables

If there is at least one available Ethernet wall jack in your home, you can go online using the Ethernet service.



1. Laptop computer
2. Desktop computer
3. Ethernet wall jack
4. Power adapter
5. HG630a

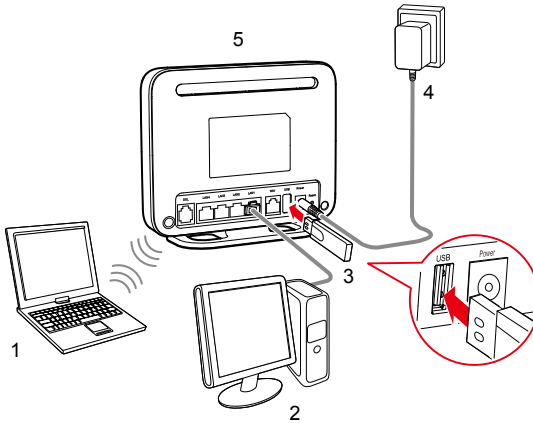
Getting Started

After connecting the cables, press the **On/Off** button on the side panel to power on the HG630a.

After you power on the HG630a, the **Power** indicator turns on, the **WAN** indicator turns on. This indicates that the HG630a is working properly. When the **WAN** indicator starts blinking, data is being transmitted between the HG630a and the connected device.

1.3 Connecting Cables Using the USB Port

Connecting Cables



1. Laptop computer
2. Desktop computer
3. USB modem
4. Power adapter
5. HG630a

Getting Started

After connecting the cables, press the **On/Off** button on the side of the HG630a to power on the HG630a.

After you power on the HG630a, the **Power** indicator turns on, the **USB** indicator turns on. This indicates that the HG630a is working properly. When the **USB** indicator starts blinking, data is being transmitted between the HG630a and the connected device.

2 Setting Network Access Parameters

2.1 Logging In to the Web-based Configuration Utility

Most of the HG630a parameters are preset before delivery to meet common home application scenarios. To check the HG630a's working status or configure certain advanced network functions, use the web-based configuration utility.

To log in to the web-based configuration utility,

Step 1 Set up network access for your computer. Set the network connection of your computer to obtain an IP address automatically.



By default, the Dynamic Host Configuration Protocol (DHCP) function is enabled. The HG630a then assigns an IP address to your computer automatically. If you disable the DHCP function, please ensure that the IP address of the computer and that of the HG630a LAN port are in the same network segment to enable the computer to access the web-based configuration utility.

Step 2 Open a web browser on your computer and ensure that the browser does not use any proxy servers.

Using Internet Explorer 8.0 as an example to ensure no proxy servers are used:

1. Choose **Tools > Internet Options**.
2. On the **Connections** tab of the **Internet Options** dialog box, click **LAN Settings**.
3. In the **Proxy server** area, ensure that **Use a proxy server for your LAN** is cleared. If **Use a proxy server for your LAN** is selected, clear **Use a proxy server for your LAN**, and then click **OK**.

Step 3 Enter **http://192.168.1.1** in the address bar, and then press **Enter**.

Step 4 Enter the user name (default is **user**) and password (default is **HuaweiUser**) in the **Username** and **Password** text boxes.

Step 5 Click **Login**.



-
- For security reasons or to make the password easy to remember, you can change the user name and password for the web-based configuration utility. For details, see section 4.1 "Changing the User Name and Password for the Web-Based Configuration Utility".
 - If the user name and password have been changed, use the correct user name and password for login.
-

After the system verifies your account information, the web-based configuration utility is displayed.

2.2 Configuring a Dial-up Connection for Internet Access

The HG630a works in routing mode by default. And the HG630a starts to set up a dial-up connection automatically after the startup. You can access the network after you power on your computer. You do not need to install any special dial-up software on your computer or perform dial-up operations on your computer.

To configure the HG630a and your computer for the network access, do as follows:

- Step 1** Log in to the HG630a's web-based configuration utility.
- Step 2** Click **Setup Wizard**.
- Step 3** Click **Next**.
- Step 4** In **User name** and **Password**, enter the user name and password that are provided by your service provider, and then click **Next**.
- Step 5** In **SSID**, set a wireless network name, and then click **Next**.



-
- The default wireless network name and password which are printed on the label of the HG630a's rear panel are preset before delivery. They are unique and safe. If you do not want to modify them, click **Next**.
 - For security reasons or to make the password easy to remember, you can change it. For details, see section 4.3 "Changing the Wireless Network Name and Password".
 - If the default wireless network name and password have been changed, use the new ones.
-

Step 6 Check that the wireless name you set is correct, and then click **Submit**.

Then check the status of the **Internet** indicator. When the **Internet** indicator turns green, you can access the Internet.

The preceding operations need only be performed on a computer once. The next time when you power on the computer, you can access the Internet without any other configurations.

3 Setting Up a Wireless Connection

If a wireless network adapter is installed on your computer, you can connect your computer to the HG630a over a wireless connection.



The method for installing the wireless adapter and its driver varies by vendor. For details, see the installation guide provided by the vendor of your wireless adapter.

The HG630a's wireless network function is enabled by default. To check the function status, see section 5.2 "Enabling or Disabling the Wireless Network Function".

There are two methods for setting up a wireless connection between the HG630a and your computer.

3.1 Setting Up a Wireless Connection With the WPS Button

The HG630a supports the Wi-Fi Protected Setup (WPS) function in Push Button Configuration (PBC) mode. If your computer also supports the WPS function, do the following to connect your computer to the HG630a wirelessly:



Windows 7 supports the WPS function. Windows XP supports the WPS function using the wireless network adapter.

Step 1 Press and hold the **WPS** button on the HG630a's side panel for at least 1 second.

The **WPS** indicator on the HG630a starts blinking, indicating that the WPS negotiation is in progress.

Step 2 Enable the WPS negotiation function on the computer within 2 minutes.

Wait for a while, the **WPS** indicator on the HG630a stops blinking and turns steady on, indicating that a wireless connection is set up between the HG630a and computer.



-
- You need to wait for 10~120 seconds.
 - The **WPS** indicator is on for about 300 seconds and then turns off.
-

3.2 Setting Up a Wireless Connection Manually

If your network adapter does not support the WPS function, you can also set up a wireless connection manually. The following example uses a computer running the Window XP operating system to describe how to set up a wireless connection using the default wireless network name and password:

Step 1 Enable the wireless configuration service provided by Windows XP.

1. Right-click **My Computer** to display a short-cut menu, and choose **Manage**.
2. In the **Computer Management** window, choose **Computer Management (Local) > Services and Applications > Services**.
3. Right-click **Wireless Zero Configuration** to display a shortcut menu, and choose **Properties**.
4. Check that **Service status** is **Started**. If **Service status** is not **Started**, click **Start**.
5. Click **OK** to close the dialog box, and then close the **Computer Management** window.

Step 2 Record the wireless network name (**SSID**) and its password (**WLAN Key**) printed on the label on the HG630a's rear panel.



If the default wireless network name and password have been changed, use the new ones.

Step 3 Configure the wireless network connection on the computer as follows:

1. Choose **Start > All Programs > Accessories > Communications > Network Connections**.
2. In the **Network Connections** window, right-click **Wireless Network Connection** to display a shortcut menu, and then choose **Properties**.
3. In the **Wireless Network Connection Properties** dialog box, click the **Wireless Networks** tab.
4. Select **Use Windows to configure my wireless network settings**.
5. Click **View Wireless Networks**.
6. In the **Wireless Network Connection** dialog box, select the wireless network whose name is the same as the one you recorded in Step 2, and then click **Connect**.
7. In the dialog box, enter the password you recorded in Step 2, and then click **Connect**.

After the system verifies the wireless network name and password, **Connected** appears on the wireless network icon in the wireless network list, indicating that your computer has established a wireless connection to the HG630a.

8. Close **Wireless Network Connection** dialog box.



You need to set up a wireless connection only once. Then you can access the wireless network anytime you want as long as that the wireless network name and password are not changed. When the HG630a is working properly, your computer connects to the HG630a automatically after its wireless function is enabled.

4 Maintenance Guide

4.1 Changing the User Name and Password for the Web-Based Configuration Utility

For security reasons or to make the password easy to remember, you can change the user name and password for the web-based configuration utility.

To change the user name and password for login:

- Step 1** Log in to the HG630a's web-based configuration utility.
- Step 2** Choose **Maintenance > Account** to display the user information management page.
- Step 3** Enter a new user name, your current password, and a new password. Re-enter the new password to confirm it.
- Step 4** Click **Submit**.

After the user name and password are changed, the login page is displayed. Enter your new user name and password to log in.



If you forget the password, you can restore the default settings by pressing and holding the **Reset** button on the rear panel of the HG630a for over 6 seconds. The user name and password used for logging in to the web-based configuration utility are then restored to their default values. After the HG630a is restored to its default settings, all user customized data will be lost. Use this function only when necessary.

4.2 Enabling or Disabling the Wireless Network Function

There are two methods for enabling or disabling the wireless network function.

Using the WLAN Button

To enable or disable the wireless network function, press the **WLAN** button on the side panel of the HG630a over 1 second. The **WLAN** indicator indicates the status of the wireless network function.

Using the Web-Based Configuration Utility

To enable or disable the wireless network function from the web-based configuration utility:

- Step 1** Log in to the HG630a's web-based configuration utility.
- Step 2** Choose **Basic > WLAN** to display the WLAN tab.
- Step 3** Select **Enable WLAN**.
 - Select **Enable WLAN** to enable the wireless network function.
 - Clear **Enable WLAN** to disable the wireless network function.

4.3 Changing the Wireless Network Name and Password

When your HG630a is delivered, the wireless network name and password are preset. You can find them on the HG630a's rear panel label. For security reasons or to make the password easier to remember, change the wireless network name and password as follows:

(Take default wireless network encryption mode **WPA-PSK/WPA2-PSK** as an example)

- Step 1** Log in to the HG630a's web-based configuration utility.
- Step 2** Choose **Basic > WLAN** to display the WLAN tab.
- Step 3** Select **Enable WLAN**.
- Step 4** In **SSID**, enter a new wireless network name.
- Step 5** For **Security**, select **WPA-PSK/WPA2-PSK**.
- Step 6** In **WPA Pre-Shared Key**, enter a new password. Use the default settings for other parameters.
- Step 7** Click **Submit**.

Remember the new wireless network name and password you just set. You will be prompted to enter this password when connecting wireless devices, such as a computer, to the HG630a's wireless network.



If you forget the wireless network name and password, log in to the web-based configuration utility, and set a new name and password. Alternatively, you can restore the HG630a to its default settings. The name and password are then restored to the values printed on the label on the HG630a's rear panel.

4.4 Changing the IP Address Used to Log In to the Web-based Configuration Utility

To change the login IP address and make it easier to remember:

- Step 1** Log in to the HG630a's web-based configuration utility.
- Step 2** Choose **Basic > LAN** to display the **DHCPv4 Server** tab.
- Step 3** In the **LAN Host Settings** section, enter a new IP address in **IP address**. Then enter a new subnet mask in **Subnet mask**.
- Step 4** Click **Submit** to save the changes.



To log in to the web-based configuration utility after you change the IP address successfully, you need to launch the Internet Explorer, and then enter the new IP address in the address bar. Ensure that the IP address of the computer is in the same network segment as that of the HG630a so that the computer can access the web-based configuration utility.

4.5 Restoring Default Settings



If you restore the HG630a to its default settings, all customized user data will be lost. Use this function only when necessary.

To restore the HG630a to its default settings, power on the HG630a, press and hold the **Reset** button on the rear panel for over 6 seconds, and then release the button.

You can also do the following to restore the HG630a to its default settings from the web-based configuration utility:

Step 1 Log in to the HG630a's web-based configuration utility.

Step 2 Choose **Maintenance > Device** to display the **Reset** tab.

Step 3 Click **Restore Default Settings**.

Step 4 In the displayed dialog box, click **OK**.

The login page will be displayed within 2 minutes. Enter the default user name (**user**) and password (**HuaweiUser**) to log in.

4.6 Configuring the Firewall

The firewall can protect the terminal against malicious access on the WAN port and is used when the HG630a works in routing mode. To configure the firewall, do as follows:

Step 1 Log in to the HG630a's web-based configuration utility.

Step 2 Choose **Advanced > Firewall** to display the firewall page.

Step 3 Select a firewall level for **Firewall level**.

Step 4 Click **Submit**.

5 Applications Guide

5.1 Accessing a Portable Storage Device Using the FTP Client

The HG630a supports a home storage and printing function. After a portable storage device is connected to the USB port, you can configure the HG630a through the FTP server to access the portable storage device from the LAN or Internet.

To access a portable storage device:

Step 1 Connect the mobile storage device to the HG630a's USB port.

Step 2 Enable the FTP server, and configure the FTP server settings.

1. Log in to the HG630a's web-based configuration utility.
2. Choose **Advanced > USB Port** to display the **FTP** tab.
3. Select **Enable FTP Server**.
4. In **User name** and **Password**, enter a user name and password for the FTP server.



-
- By default, both the user name and password are **ftp**.
 - For security reasons or to make the password easy to remember, you can change the user name and password for the FTP server.
-

5. Enter a server port number (default is **21**) in the **Port** text box.
6. Click **Submit** to save the settings.

Step 3 Start the FTP client, and access the HG630a's LAN IP address through the FTP server.

1. On your computer, launch a browser.
2. Enter **FTP:// 192.168.1.1** in the address bar, and press **Enter**.
3. In the login dialog box, enter the user name and password for FTP server login (values that you set in Step 2), and click **Login**.

After the user name and the password are verified, you can read data from or write data to the mobile storage device connected to the HG630a.

5.2 Allowing Internet Users to Access an Internal Resource Server

Without special settings, Internet users cannot access the web or FTP servers on a LAN. By using the network address translation (NAT) function of the HG630a, specified Internet users are allowed to access the web and FTP servers on a LAN.

Furthermore, IP addresses used by most users to access the Internet are dynamically assigned by service providers, so many cannot use fixed IP addresses to access the resources provided on servers. The HG630a's Dynamic Domain Name Service (DDNS) function allows Internet users to use fixed domain names to access the resources provided on servers. After the DDNS function is enabled, the HG630a automatically submits the new IP address obtained to the server of a DDNS provider. On the DDNS server, the IP address that corresponds to the domain name is updated to the latest IP address. When a computer on the Internet accesses the domain name, the DDNS server provides the latest IP address to that computer.

If you deploy a web server on a LAN and want Internet users to be able to access the web site on the web server through a fixed domain name, take the follow IP addresses of relevant devices as an example:

- The IP address of the HG630a LAN port is **192.168.1.1**.
- The IP address of the web server is **192.168.1.24**.

You can use the port relay function of the NAT and DDNS function to implement the preceding requirements.

Before the configuration, you need to complete the following actions:

- Apply for the DDNS from a DDNS provider to obtain relevant parameters.
- Apply for a domain name for the web site from the institution that manages web site domain names.

After the preceding actions, set the parameters of the HG630a as follows:

- Configure a port mapping rule, and then map the IP address of the web server (**192.168.1.24:80**) to the **80** port of the WAN port.
- Configure the DDNS. Ensure that the HG630a can submit IP addresses to the DDNS server automatically.

The configuration procedure is as follows:

Step 1 Log in to the web-based configuration utility.

- Step 2** Choose **Advanced > NAT**.
- Step 3** Click **Port Mapping** tab.
- Step 4** Click **New**.
- Step 5** Select **Application**, and then select **Security web server (HTTP)** for **Application**.



The port mapping function of the HG630a provides parameter setting templates of multiple applications. After a template is selected, the HG630a sets relevant parameters automatically. You can change the parameter settings as required. You can also set all the parameters manually based on the requirements of other applications.

- Step 6** Set the following parameters as planned.
- External start port: 80
 - External end port: 80
 - Internal host: 192.168.1.24
 - Internal port: 80
- Step 7** Click **Submit**.
- Step 8** Choose **Advanced > DDNS** to display the **DDNS** tab.
- Step 9** Click **New**.
- Step 10** In **Service provider**, select your service provider.



-
- If your service provider does not in the drop-down box, select **Others**.
 - The DDNS function of the HG630a provides parameter setting templates of multiple DDNS providers. After a template is selected, the HG630a sets relevant parameters automatically. You can change the parameter settings as required. You can also set all the parameters again as required.
-

- Step 11** Set the parameters provided by the DDNS provider.
- Step 12** Click **Submit**.

6 FAQs

Can I use the HG630a as a DHCP server?

Yes. The HG630a incorporates the DHCP server software.

How can I quickly restore the default settings of the HG630a?

When the HG630a is powered on, press and hold the **Reset** button for 6 or more seconds, and then release it. The HG630a then automatically restarts and the default settings are restored.

What can I do if I cannot access the HG630a configuration page?

- Step 1** Check the IP address of your computer and ensure that this IP address is in the same network segment as the HG630a LAN IP address.
- Step 2** Ensure that your Web browser does not use a proxy server.
- Step 3** Ensure that you have entered the valid user name and password used to access the HG630a configuration page.

If the problem persists, restore the default settings of the HG630a.

Does the WPS function have any special requirement on the wireless encryption settings of the HG630a?

The WPS function can be used only when the WLAN security mode is set to **WPA-PSK** or **WPA2-PSK**. It is recommended that you set the security mode to **WPA-PSK/WPA2-PSK**.

If my computer fails to connect to a WLAN after I press and hold the WPS button, what should I do?

- Step 1** Ensure that only one computer is connecting to the HG630a through the WPS function at one time.
- Step 2** On the HG630a, ensure that the wireless network function and the WPS function implemented through the PBC method are enabled.
- Step 3** Ensure that the security mode of the WLAN is set to **WPA-PSK** or **WPA2-PSK**. Note that the WPS function of the HG630a is forcibly disabled if the WEP encryption is used for the WLAN.
- Step 4** Check the positions of the HG630a and computer. Ensure that they are far from electric appliances that generate strong magnetic or electric fields, such as microwave ovens, refrigerators, and

cordless telephones.

Step 5 Place the HG630a and the computer in an open space. Although radio signals can pass through obstacles, passing through too many obstacles, such as walls and columns may negatively impact the transmission of WLAN radio signals.

What can I do if I cannot access the Internet through a wireless network adapter?

Step 1 Ensure that the power cables and telephone lines of the HG630a are connected properly.

Step 2 Check whether the **WLAN** indicator of the HG630a is on.

If the **WLAN** indicator is off, the WLAN function of the HG630a is disabled. If this is the case, enable the WLAN function.

For details about how to enable the WLAN function, see section 5.1 "Enabling or Disabling the WLAN Function."

Step 3 Look at the description of the wireless network adapter that is installed on the computer and check whether the wireless network adapter supports the 802.11b, 802.11g, or 802.11n protocols.

If the wireless network adapter does not support the preceding protocols, replace it.

Step 4 Check whether the driver for the wireless network adapter is installed on the computer properly.

If the driver is installed improperly, re-install it.

Step 5 Check whether the computer can receive signals from the WLAN.

Using a computer that runs Windows XP as an example, check whether the computer can receive signals from a WLAN by doing the following:

1. In the **Control Panel** window, double-click **Network Connections** to display the **Network Connections** window.
2. In the **Network Connections** window, right-click **Wireless Network Connection** and choose **View Available Wireless Networks**.

If the computer cannot detect a WLAN, place the computer close to the HG630a and ensure that no obstacles (such as cement or wooden walls) are present between the computer and the HG630a.

Step 6 Check whether the computer accesses the WLAN of the HG630a successfully.

Check the list of wireless network connections and ensure that the HG630a

is connected to the WLAN.

Step 7 Try to access different web sites to check whether the HG630a can access other web sites.

If the HG630a cannot access other web sites, restore to the default settings of the HG630a. If the problem persists, contact your service provider.

How do I improve the transmission quality of wireless signals?

Step 1 Check the positions of the HG630a and computer. Ensure that they are far from electric appliances that generate strong magnetic or electric fields, such as microwave ovens, refrigerators, and cordless telephones.

Step 2 Place your HG630a in an open space.

Although radio signals can pass through obstacles, passing through too many obstacles, such as cement or wooden walls may negatively impact the transmission of WLAN radio signals.

Step 3 Place your computer close to your HG630a.

If your computer is far from your HG630a, the transmission of radio signals may be negatively impacted.

Step 4 Place your HG630a and computer in a different direction.

Step 5 Avoid using your HG630a to access a WLAN during thunderstorms.

What can I do if the WLAN of the HG630a is not encrypted and the computer cannot access the WLAN?

Step 1 Delete the settings of wireless network connections from your computer.

Using a computer that runs Windows XP as an example, delete the settings of wireless network connections by doing the following:

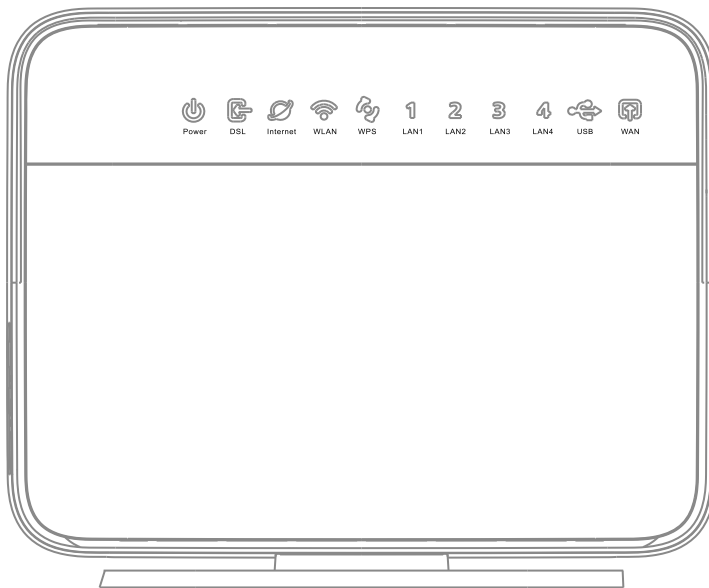
1. In the **Control Panel** window, double-click **Network Connections** to display the **Network Connections** window.
2. In the **Network Connections** window, right-click **Wireless Network Connection** and choose **Properties**.
3. In the **Wireless Network Connection Properties** dialog box, click the **Wireless Networks** tab.
4. In the **Preferred Networks** group box, select the latest wireless network connection saved on your computer, and then click **Remove**.
5. Delete all the other wireless network connections from the **Preferred Networks** group box.

6. Click **OK**.

Step 2 Create a wireless network connection that is not encrypted.

7 Appendix

7.1 Indicators

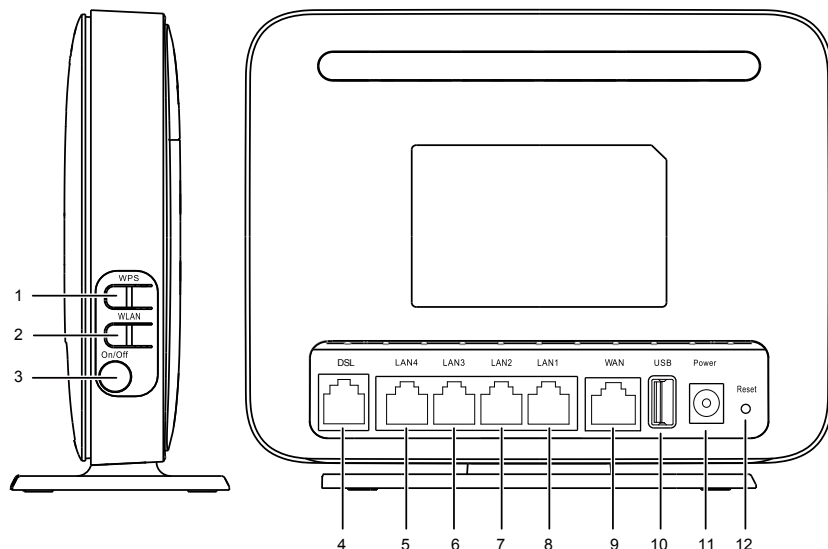


Indicator	Status	Description
Power	On	The HG630a is powered on.
	Off	The HG630a is powered off or faulty.
DSL	Blinking	The HG630a is being activated through DSL.
	Steady on	The HG630a is activated through DSL.
	Off	<ul style="list-style-type: none">• The HG630a is powered off.• The HG630a is activated through WAN or USB modem.

Indicator	Status	Description
Internet	On	<ul style="list-style-type: none"> • The HG630a is working in routing mode. • The WAN connection is set up. • No data is being transmitted.
	Blinking	<ul style="list-style-type: none"> • The HG630a is working in routing mode. • The WAN connection is set up. • Data is being transmitted.
	Off	<ul style="list-style-type: none"> • The HG630a is working in bridge mode. • The HG630a is working in routing mode, but the connection to the WAN has not been set up. • The HG630a is powered off.
WLAN	On	The WLAN connection is set up, but no data is being transmitted.
	Blinking	The WLAN connection is set up, and data is being transmitted.
	Off	The WLAN function is disabled.
WPS	Blinking	<ul style="list-style-type: none"> • A wireless client, such as a computer installed with a wireless network adapter, is connecting to the HG630a using the WPS function. • This process lasts for no longer than 120 seconds.
	Off	The WPS function is disabled or faulty.
LAN1 ~ LAN4	On	The HG630a is connected to a device properly.
	Blinking	Data is being transmitted between the HG630a and the device connected.
	Off	No connection is set up on the port.

Indicator	Status	Description
USB	Blinking	<ul style="list-style-type: none"> ● The HG630a is being activated through USB modem. ● Data is being transmitted on the USB port.
	Steady on	<ul style="list-style-type: none"> ● The HG630a is activated through USB modem. ● A portable storage device is connected to the USB port.
	Off	<ul style="list-style-type: none"> ● The USB port is not connected. ● The HG630a is activated through DSL and WAN.
WAN	On	The HG630a is activated through Ethernet.
	Blinking	Data is being transmitted between the HG630a and Ethernet.
	Off	<ul style="list-style-type: none"> ● No connection is set up on the port. ● The HG630a is powered off.

7.2 Ports and Buttons



Number	Port or Button	Description
1	WPS	Used to enable the WPS function.
2	WLAN	Used to enable or disable wireless network function quickly.
3	On/Off	Used to power on or off the HG630a.
4	DSL	Used to connect to the MODEM port on the splitter or connect to the telephone wall jack.
5 ~ 8	LAN4~LAN1	Used to connect Ethernet devices, such as computers and switches, to the HG630a.
9	WAN	Used to connect the HG630a to the network.

Number	Port or Button	Description
10	USB	<p>USB port used to connect to a USB device, such as a USB storage device or printer.</p> <p>NOTE</p> <p>The maximum voltage/current output from the USB port is 5 V/1 A. That is, the input voltage/current of the USB device connected to the USB port cannot exceed 5 V/1 A. Otherwise, the HG630a may not work correctly.</p>
11	Power	Used to connect to the power adapter.
12	Reset	<p>To restore the HG630a to its factory settings, power it on, press and hold the Reset button for at least 6 seconds, and then release it.</p> <p>NOTE</p> <p>After you restore the HG630a to its factory settings, your user settings will be lost. Therefore, use this function with caution.</p>

7.3 Default Settings

Parameter	Setting
IP address of the LAN port	192.168.1.1
Subnet mask of the LAN port	255.255.255.0
User name used to log in to the web-based configuration utility	user
Password used to log in to the web-based configuration utility	HuaweiUser
SSID used to access wireless network	Check the label on the HG630a's rear panel
WLAN key used to access wireless network	Check the label on the HG630a's rear panel
DHCP server function	Enable
WLAN function	Enable

7.4 Technical Specifications

Item	Specification
Ambient temperature for operation	0°C to 40°C (32°F to 104°F)
Dimensions (without antenna, H × W × L)	About 32 mm × 130 mm × 162 mm
Weight (Not including the power adapter)	< 360 g
Relative humidity for operation	5% to 95%, non-condensing
WLAN standards	802.11b, 802.11g and 802.11n (2.4 GHz)

Item	Specification	
Wireless transmission rates	802.11b	Up to 11 Mbit/s
	802.11g	Up to 54 Mbit/s
	802.11n (with 2T2R external antenna used)	Up to 300 Mbit/s

HUAWEI TECHNOLOGIES CO., LTD.

Huawei Industrial Base

Bantian, Longgang

Shenzhen 518129

People's Republic of China

www.huawei.com

Free Manuals Download Website

<http://myh66.com>

<http://usermanuals.us>

<http://www.somanuals.com>

<http://www.4manuals.cc>

<http://www.manual-lib.com>

<http://www.404manual.com>

<http://www.luxmanual.com>

<http://aubethermostatmanual.com>

Golf course search by state

<http://golfingnear.com>

Email search by domain

<http://emailbydomain.com>

Auto manuals search

<http://auto.somanuals.com>

TV manuals search

<http://tv.somanuals.com>