



## Replacement Parts

58-GC5027

January, 2000  
Supersedes Issue of  
July, 1982

Cam Switch  
Non-Reversing - 2 Speed - 3 Phase  
Single Winding, Constant, Or Variable Torque  
C5027 & C5027B

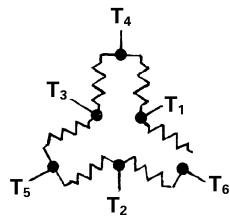
### INTERNAL CONNECTIONS

#### Low Speed Interlock Closed

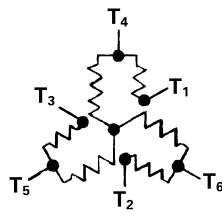
L1 - T1  
L2 - T2  
L3 - T3

#### High Speed Interlock Closed

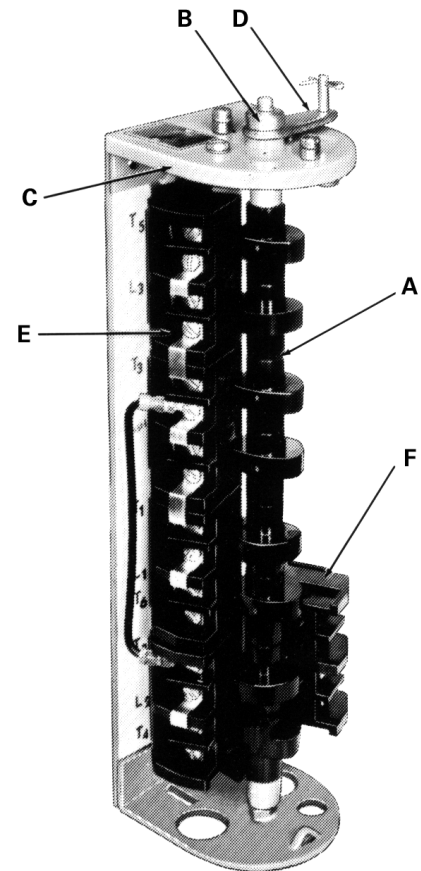
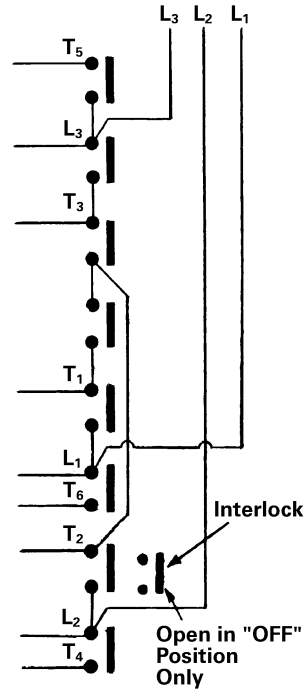
L1 - T6  
L2 - T4  
L3 - T5  
Together  
T1 - T2 - T3



Constant Torque



Variable Torque



Item	Part Name	Cat. No.	No. Req'd	Part Number
A	Rotor Assembly	C5027 C5027B	1 1	D50073001 D51902001
B	Roller Lever Assembly		1	D10288001
C	Index Spring		1	D06171002
D	Lever Assembly		1	D17811001
E	Contact Board - 2 Pole		4	D50542001
F	Contact Board - 1 Pole		1	D72145010

**NOTE:** When ordering replacement parts, give catalog number of control and part number.

(For Engineering Reference Only - Rev. B)

## Free Manuals Download Website

<http://myh66.com>

<http://usermanuals.us>

<http://www.somanuals.com>

<http://www.4manuals.cc>

<http://www.manual-lib.com>

<http://www.404manual.com>

<http://www.luxmanual.com>

<http://aubethermostatmanual.com>

Golf course search by state

<http://golfingnear.com>

Email search by domain

<http://emailbydomain.com>

Auto manuals search

<http://auto.somanuals.com>

TV manuals search

<http://tv.somanuals.com>