

**Hughes & Kettner**  
TECHNOLOGY OF TONE



***Guitar & Bass Amplification 2006***

## *Ultimate Tone. Ultimate Flexibility*

### ***Beyond the Limits***

When we set out to build guitar amps more than 20 years ago, three distinct breeds roamed the sonic jungle—those that purred with sparkling clean tone, those that growled with throaty crunch sounds, and the state-of-the-art amp of the day that roared with feral rock sound. But gradually guitarists began to expect more from an amp. Increasingly dissatisfied with the limited sonic spectrum of these one-sound wonders, players started toting an array of amps into the studio. And soon gigging rigs followed suit, growing more complex and difficult to manage.

Players' desire for more options sparked our vision of a new generation of guitar amps for a new generation of guitarists. We aspired to engineer advanced sound-sculpting tools that would unite the best of the disparate sonic worlds of clean, crunch and overdrive in a single housing. Bona fide instruments that impose no limits on spontaneity and expressive powers!

### ***The Tone of Hughes & Kettner***

The last 50 years birthed but a few of distinctive electric guitar sounds. Like most guitarists, we are fascinated by the inspirational power of these trademark tones. And our amp designs are steeped in this rich tonal heritage.

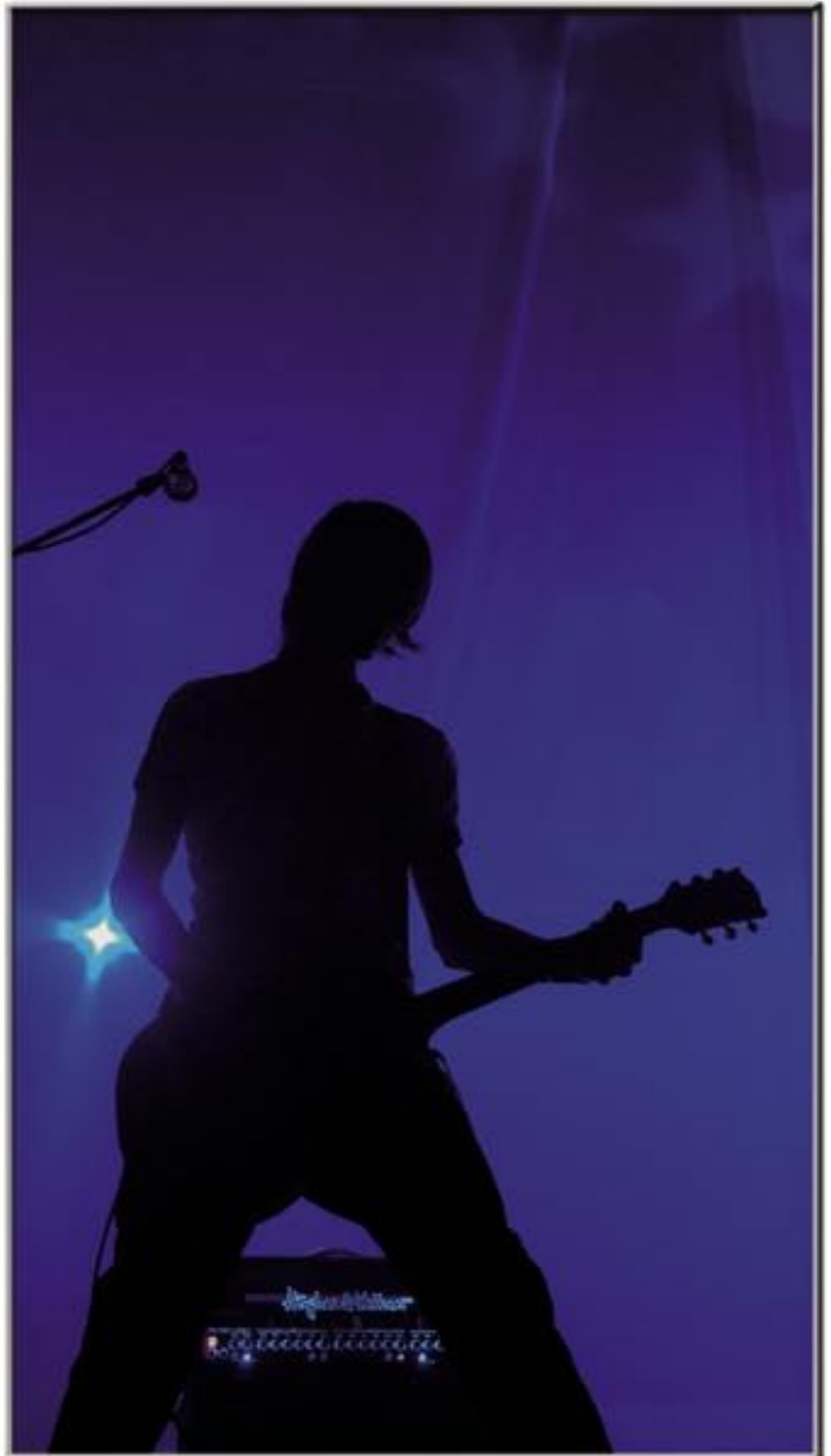
We respect the legacy but continue to strive for perfection, painstakingly fine-tuning our amps to improve on classic sounds. The fruits of our labors are here for all to hear: Every channel does what a good amp should—and so much more. Collectively, these channels deliver the versatility you expect, the responsiveness you demand, and the tone you deserve. Whatever tonal treasures you seek, you're sure to find them here!



### ***Inspiration through Innovation***

Look at an amp and you'll see applied science; listen to a good one and you're hearing art. An amp is an instrument with a distinctive personality and playability. As such, it is a source of inspiration that has a decisive impact on your music. We believe our amps to be the stimulus for your creative activity. And that's why we are so deeply committed to bringing the benefits of innovative ideas and exceptional sound quality to every class, from the newbie-amp to the high-end flagship.

**Hughes & Kettner**  
TECHNOLOGY OF TONE





# Custom Class

## The Master Class: Handcrafted Art of Performance

Our company is powered by a passion for tone. We know that it takes a lot more than a fistful of valves and branded speakers to make great amps. You have to obsess about every detail. And it's not just the design, the workmanship or the quality of components. The magic is in the right combination!

Our Custom Class amps are the fruit of our never-ending quest for perfect tone and performance. It is this pursuit of excellence that makes Hughes & Kettner® Custom Class amps unique instruments for unique musicians, designed to satisfy even the most discriminating guitarists' demands. Looking for the ultimate? You've found it.

Our Custom Class is not about yesteryear's designs that limit your playing flexibility. Nor are these amps about this month's flavor. They are the perfect marriage of classic tones and modern flexibility. These treasure-troves of tone are built to go the distance in all respects.

They are handcrafted in our German custom-shop, just like you'd expect from products in this class. But despite boutique credentials such as hand-wired circuitry and superior grade hand-selected tubes, we engineer these amps using 21st-century manufacturing and cutting-edge testing methods. And that translates to dramatically diminished tolerances and variances for unprecedented reliability and consistent sound quality.

These amps look awesome. But under that stylish skin, they are tough as nails—built to take a pounding and keep on sounding! Featuring heavy-duty stainless steel chassis, they are rugged, reliable and roadworthy pieces of performing art!

Whatever your favorite flavor—The Shadows, Slade, Santana, Sting or Slipknot—you can count on our Custom Class amps to give you the definitive sounds you've come to expect from Hughes & Kettner. Today and at every gig for many moons to come!





## TriAmp® MK II The Ultimate Tube Head

*Three of the finest classic tube amp designs rolled into one!*

TriAmp® MK II is your first choice for awesome sound and total tonal flexibility. This definitive all-tube, Custom Class amp puts the most sought-after sounds in amp history at your fingertips. It's all there, from vintage Californian clean to '60s British jangle and from classic rock tones to nu metal meltdown. TriAmp puts an end to carting an armada of amps around for the sake of versatility—and adds crucial performance features for stage use.

Each of the amp sections features two channels, dedicated 3-band EQ and Master controls. Remote channel switching comes

courtesy of the included Stageboard. The built-in effects loop is configurable in serial or parallel mode, and the optional MSM-1 MIDI module adds remote MIDI switching capabilities. This turns TriAmp into the hub of every cutting-edge sound system. This amp is the real deal, boasting a staggering 13 hand-selected tubes in a non-compromising design. Finally, all-tube tone and total versatility come together in one awe-inspiring masterpiece of rock art—what more could you want in an amp?



## TriAmp MK II

Custom Class all-tube design: 13 tubes!

Three classic amps in one with 6 channels:

- Amp 1: Channel A – Vintage Californian Clean  
Channel B – Vintage British Clean
- Amp 2: Channel A – Classic British Rock  
Channel B – Vintage British Rock
- Amp 3: Channel A – Duotone-like Overdrive  
Channel B – Modern US Hi Gain

"Tight" Switch in Amp 1

FX-loop mode switch (serial or parallel)

Stageboard included

Power amp: four EL34 tubes / 100 W at 4, 8 or 16 Ohms

Half-power switch

Optional MSM-1 MIDI remote module

750 x 340 x 256 mm; 22 kg / 49 lbs

### MSM-1 MIDI Module (optional)

Add the MSM-1 module to turn TriAmp into a full-fledged sound system with MIDI switchable channels and FX loop switching (including serial/parallel modes).



Stageboard included



<p><b>SPEAKERS</b> MAXIMUM OUTPUT 100 WATTS NEVER USE AMP WITHOUT SPEAKERS CONNECTED</p>	<p><b>RED BOX</b> DI OUT TO INSTALL MIDI MODULE: DISCONNECT AC POWER CORD BEFORE REMOVING THIS COVER</p>	<p>NETZGERÄT 16 A/250V NETZGERÄT 16 A/250V</p>	<p><b>FX LOOP</b> SEND FX SEND LEVEL RETURN LEVEL FX SERIAL PARALLEL PREAMP OUT POWERAMP IN</p>	<p>MAX PANEL AND CONNECTION COMPONENTS MAY BECOME TOO HOT TO TOUCH WHEN LEAVE EXPOSED PLACE FOR BEVER OPERATING</p>	<p><b>HALFPOWER</b> 100 WATTS 50 WATTS</p>	<p><b>STAGEBOARD</b> ANODE FUSE: 200 V / 1.000 mA</p>	<p><b>INPUT</b> 100 0V 1.000 mA VOLTAGE AND OUTPUT AND SPEAKERS OF THIS UNIT TO BE CHECKED OUT BY QUALIFIED SERVICE PERSONNEL</p>
--	--	--	---	---	--	---	---





# Duotone®

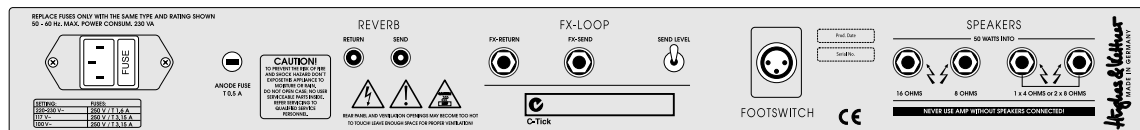
## The Supercharged "British" Classic

*Truest British and beyond...*

Duotone® delivers to-die-for tone, but takes the one-sound-wonder of vintage amps a significant step further. When we set out to design this modern classic, we collaborated with an amp-tuning specialist to embrace the pros' most frequently asked for modifications. The top four demands are more tone, more attack, a tube-driven effects loop and a clean channel that merits its name!

So we went on to build the first off-the-rack amp to offer all of these special tweaks as standard features: You get supercharged classic rock tones thick enough to slice with fat, dynamic overdrive, a top-drawer clean channel, a tube-driven effects loop, and even a dual master. And with a 100-watt Duotone head and a Celestion® Vintage 30 equipped 50-watt combo on offer, the choice is all yours. Duotone—all of the real sounds, none of the limitations!

Duotone	
Custom class all-tube design	
Two Channels: Clean and Overdrive	
Switchable boost on Overdrive Channel	
Independent triple-band EQs per channel	
Tube-driven parallel effects loop	
Master Controls: Presence, Master 1, Master 2, Effect	
Dual Master for 2 foot-switchable output volume presets	
Power amp:	
Head - four EL34 tubes / 100 W	
Combo - two EL34 tubes / 50 W	
Speaker: 1 x 12" Celestion® Vintage 30 (combo)	
Footswitch included	
750 x 320 x 250 mm; 24 kg / 53 lbs (head)	
670 x 560 x 250 mm; 27 kg / 60 lbs (combo)	





## Puretone™ Purist Pleasures

*No frills for the ultimate sonic thrills...*

The amp of every purist's dream: If you have always wished for an amp that responds to your every touch, then this one's for you! Determined to create a truly uncluttered amp with point-to-point wiring, we sought to go the shortest distance between guitar and speaker cabinet. Everything else had to go. Forget the master, effects loop and fancy switching frills—our no-nonsense blueprint left no room for interpreters that might dilute the message. Just one channel with 3-band EQ, a volume control, and selected superior components—that's it.

This disciplined approach yielded one of the world's most responsive and articulate amps. And if you feel the EQ gets in the way, simply dial it out by using the Growl knob. Puretone pumps out far more volume than you'd expect from a 25-watt amp sporting two EL34 tubes. Hence the two-stage power-soak that lets you enjoy the aural rapture of a Class A power amp breaking up—without blowing out your eardrums.

Puretone is the non-stop ticket to tonal heaven for real players!





## Puretone

Custom class all-tube design, Class A

Single channel with 3-Band EQ

Growl knob for tapering off the EQ up 'til Bypass

Head and combo versions available

Power amp: two EL34 tubes / 25 W

Two-stage power soak for power reduction

Speaker: 1 x 12" Celestion® Vintage 30 (combo)

625 x 320 x 260 mm: 17 kg / 38 lbs (head)

625 x 520 x 250 mm: 25 kg / 55 lbs (combo)



Prod. Date		 MADE IN GERMANY
Serial No.		
<p><b>NEVER USE THIS AMP WITHOUT SPEAKER CONNECTED!</b></p> <p>READ MANUAL AND VENTILATION OPENINGS MAY BECOME HOT (DO NOT TOUCH) LEAVE ENOUGH SPACE FOR PROPER VENTILATION</p>		
<p><b>CAUTION!</b> TO PREVENT THE RISK OF FIRE AND SHOCK (HANGING DOWN) EXPOSE THIS APPLIANCE TO MOISTURE OR RAIN. DO NOT OPEN CASE. NO USER SERVICEABLE PARTS INSIDE. REFER SERVICING TO QUALIFIED SERVICE PERSONNEL.</p>		
<p><b>SPEAKER</b> 8 - 16 OHMS 40 WATTS @ 8 Ω 20 WATTS @ 16 Ω</p>	<p><b>ANODE FUSE</b> T 315 mA</p>	<p><b>MAINS IN - VOLTAGE SELECTOR:</b> REPLACE FUSES ONLY WITH SAME TYPE - BAKING 230 V - T 1.6 A - 100V - T 3.15 A - 117 V - S8 3.15 A 90 - 60 Hz. MAX. POWER CONSUM. 222 VA.</p>

## TriAmp® Alex Lifeson Signature Model

Alex Lifeson, the iconic guitar player for Canadian progressive rock band Rush, has amazed fans all over the world for more than 30 years. His reliable partner in tone is our state-of-the art TriAmp®. As a gesture of gratitude for Alex's faith in our work, and to offer a very special treat to you, we have collaborated with him to create this unique signature model: The venerable Plexiglas front panel is inscribed with Alex's signature and backlit in a stylish shade of purple. The amp's exterior boasts hip black crocodile-style covering—one look and you'll be hooked!

The first 500 amps include a special Rush CD, tour book and certificate signed by Alex.



Alex Lifeson

Alex is more than merely a world-class guitarist—he's a standup guy who's supporting the cause of children's wellbeing. We are donating 50 \$ to UNICEF for every signature amp sold.



## TriAmp Alex Lifeson Signature Model

Custom Class all-tube design: 13 tubes!

Three classic amps in one with 6 channels:

Amp 1:	Channel A – Vintage Californian Clean
	Channel B – Vintage British Clean
Amp 2:	Channel A – Classic British Rock
	Channel B – Vintage British Rock
Amp 3:	Channel A – Duotone Overdrive
	Channel B – Modern US Hi Gain

"Tight" Switch in Amp 1

FX-loop mode switch (serial or parallel)

Stageboard included

Power amp: four EL34 tubes / 100 W at 4, 8 or 16 Ohms

Half-power switch

Optional MSM-1 MIDI remote module

750 x 340 x 256 mm; 22 kg / 49 lbs

Custom Cabinet CC 412 A30 / AL

Of course, we have created a special version of our acclaimed Custom Cabinet CC 412 A30 to match the unique look of the Alex Lifeson model.





## DSM™ Dynamic Sector Modeling

*Amp modeling, finally done right!*

“Nice try” is probably what comes to mind when you hear “guitar amp modeling.” Many great products out there give you all sorts of modeling bells and FX whistles—and they even do it cheaply! But that digital aftertaste still lingers. That might be OK for some, but we are determined to deliver amps with real tone & feel for serious players!

This is where DSM (Dynamic Sector Modeling) comes in: After years of painstaking research, we managed to create a new technology that authentically recreates the acoustical and electrical properties of the modeled amp. Our DSM amps’ virtual sectors interact just like the hard-wired components in their physical counterparts. In fact, our models are so amazingly accurate that they capture each amp’s trademark subtleties in every aspect.

If you know and care about tone, check out DSM and prepare for a sonic revelation that may forever change your perceptions. As many reviewers worldwide attest, DSM is convincing enough to convert even true tube believers!

## zenTera® The definitive Custom Class modeling amp

*The milestone tones of amp history  
in a single amp...*

zenTera® is everything today’s player has hoped for. And more: Imagine having the milestone sounds of every great guitar rig of the past 50 years at your beck and call. Imagine being able fall back on 17 vintage amp classics on stage every night, without breaking the bank, your back or your guitar tech’s morale with quirky ancient gear. Imagine no more, zenTera® is here!

zenTera® is an awe-inspiring amp for professional players seeking a sound system with total tonal flexibility. Its amp models were conceived with carefully selected and extremely rare vintage beauties providing the sonic blueprints. Adjusting automatically to offer the original amps’ control ranges, even the knobs feel authentic! zenTera®’s effects were designed with the same attention to detail—a virtual collection of classic stomp boxes awaits, including the TS-808 overdrive, Small Stone™ phaser, and a whole lot more!

zenTera® was engineered with the working guitarist in mind and features a classic control panel with easy access to all standard functions and customizing options. Its mixer out provides speaker simulation to make life easier on stage or when recording late at night. Skip the mic and simply plug straight into the FOH desk or your computer’s audio interface to enjoy killer sound!

So if ultimate tone and flexibility are your prime objective, and you’ve always wanted a collection of the greatest guitar rigs of the past 50 years (and wouldn’t mind the best classic and modern effects thrown in), zenTera® is here to satisfy your gear-lust. This collection of digitally modeled amps will put a genuine analog smile on your face!





### Amp Models

- '66 Fender® Twin Reverb
- '57 Fender® Tweed Deluxe
- '59 Fender® Bassman
- '59 Fender® Bassman
- '63 VOX® AC30
- '68 Marshall® model 1987
- '68 Marshall® model 1959
- '80s hot-rodded Plexi 100
- Marshall® JCM DSL 2000
- '87 Soldano® SLO 100
- '98 Mesa® Triple Rectifier
- '01 Hughes & Kettner® Warp7
- '98 Hughes & Kettner® Montana
- '88 Hughes & Kettner® ATS 100
- '80 Roland® Jazz Chorus

### Effects

- Delay
- Echo
- Ping Pong
- Tape Echo
- Tape Hallo
- Tape Multi
- Hold Echo
- Hold Ping Pong
- Hold Tape
- Reverb
- Hall
- Spring
- Garage
- Stage
- Small
- Bright
- Normal
- Warm
- Insert
- Wah Wah
- Compressor
- Tube Scream
- Fuzz
- Mid Boost
- Mod FX
- Chorus
- Flanger
- Phaser
- Phaser XL
- Tremolo

### zenTera

### Z-Board

Custom Class DSM-modeling design	Display
Head and combo version available	5 program switches
Two Sharc 32-bit floating point DSP	1 to 5 / 6 to 10 switcher
24-bit A/D converter, 116 dB dynamic range	Bank up / down
17 amp types	Wah Wah / Expression Pedal, Volume Pedal
4 FX groups: 11 Insert, 9 Modulation, 8 Delay, 8 Reverb	Tap Tempo
128 presets (001-100 user programmable)	Built-in Tuner
Power amp: 2 x 100 W	Stainless steel case housing
Analog and digital (S/PDIF) stereo recording outs	7 kg / 15 lbs
Stereo FX loop, serial	
MIDI In, Out, Thru	
Speaker: 1 x 12" Celestion® Vintage 30 (combo)	
750 x 300 x 250 mm; 19 kg / 42 lbs (head)	
755 x 600 x 295 mm; 29 kg / 64 lbs (combo)	



### Z-Board (optional)

The ultimate control board for zenTera®

Z-Board unleashes the amp's sound system capabilities to its full extent!



**CAUTION!**

DO NOT TOUCH THE TOP OF THE AMP BODY  
WHILE IT IS ON OR WHILE THE POWER IS ON.  
MIDI IN AND OUT CABLES MUST BE PLUGGED  
IN BEFORE THE AMP IS POWERED ON.  
DO NOT TOUCH THE TOP OF THE AMP BODY  
WHILE IT IS ON OR WHILE THE POWER IS ON.

CE

USTC

1 SPEAKERS LEFT

SPEAKERS RIGHT

SERIAL EFFECTS LOOP

HEADPHONES

ANALOG RECORDING OUT

MIDI IN

MIDI OUT

MIDI THRU

EFFECTS LOOP

FOOT SW

**Hughes & Kettner**  
MADE IN GERMANY

STAGEBOARD





# Custom Cabinets

## The Art of Sound

### The Voice of your amp

Speakers are a critical factor for ultimate sound—they are the final link in the chain of musical expression. So, we engineered these Custom Cabinets to match our Custom Class heads' superior tone. These cabinets meet the most stringent standards for workmanship and move some serious air to broadcast your musical message, loud and proud!

Custom Series Cabinets are loaded exclusively with G12M (Greenback) and Vintage 30 speakers built by the celebrated speaker maven Celestion®. Crafted of high quality plywood with a very low specific weight, they are rugged and tuned to deliver excellent audio response. The housings are built to underscore the speakers' trademark tonal properties. Their dovetailed joints

create bonds that ensure stability bordering on indestructibility and anchor the resonating panels firmly in place. They are precision-braced like acoustic guitars to fine-tune their resonant properties. This custom-shop approach extends to faux leather coverings selected for their swank, stylish visuals and superior acoustical attributes!



#### CC 212

More low-end punch than an open combo, yet an airier tone than a 4 x 12" cabinet: Our CC 212 is the crossroads where these two types meet. Compact and light, it's easy tote on your own.

#### CC 412 A/B 25

A 4 x 12" guitar cabinet loaded with original '60s-model speakers. These Celestion® G12Ms Greenbacks' distinctively punchy yet gloriously airy sound is the key to mind-blowing clean, crunch and classic rock tone.

#### CC 412 A/B 30

Sporting Celestion® Vintage 30 speakers with jumbo magnets, these speakers deliver a mighty bottom-end punch and plenty of mids for creamy lead tones. The perfect choice for contemporary high-gain sounds!

#### CC 412 WA 30

The perfect 4 x 12" cab for every heavy half-stack. Four Celestion® Vintage 30 speakers and an oversized enclosure for earthshaking low-end thrust.

## Custom Cabinets

CC 212	CC 412 A/B 25	CC 412 A/B 30	CC 412 WA 30
straight	A = slanted, B = straight	A = slanted, B = straight	slanted
2 x 12" Speaker	4 x 12" Speaker	4 x 12" Speaker	4 x 12" Speaker
50 W mono; 2 x 25 W stereo	100 W mono, 2 x 50 W stereo	280 W mono, 2 x 140 W stereo	280 W mono, 2 x 140 W stereo
mono: 8 ohms, stereo: 2 x 16 ohms	mono: 4/16 ohms, stereo: 2 x 8 ohms	mono: 4/16 ohms, stereo: 2 x 8 ohms	mono: 8 ohms, stereo: 2 x 4 ohms
mono/left + right	mono/left + right	mono/left + right	mono/left + right
2 steel handles	2 steel handles	2 steel handles	2 steel handles
Casters optional	Casters	Casters	Casters
750 x 570 x 290 mm, 22 kg / 49 lbs	750 x 750 x 360 mm, 35 kg / 77 lbs	750 x 750 x 360 mm, 38 kg / 84 lbs	760 x 810 x 360 mm, 46 kg/101 lbs



# TubeTools<sup>®</sup>

## Classic Tube Pedals: High Voltage—Substantial Sound

Spice up your sound with these Custom Class tone-shaping tools. These unique pedals are as easy to handle as a classic stompbox, but feature the musical substance of a real instrument.

TubeTools' rich heritage dates back nearly 20 years to 1987, when we unveiled Cream Machine, the world's smallest tube-driven guitar amp. 1992 saw the invention of the original Tubeman<sup>®</sup>, the world's first tube guitar recording preamp. Today these highly regarded vintage gems are sought after for their unique sounds and command high prices on the secondhand market.

TubeTools' dynamic performance and musical vitality are rooted in Hughes & Kettner's decades of experience with tube technology. We power TubeTools with hand-selected thermionic valves running at a hot 300 volts to get those tubes cooking and serve up a sizzling sonic treat! Built like tanks, these pedals get the job done with unheard-of authenticity. If you want all of the best classic tones and none of the hassle of dealing with old gear, TubeTools are for you!



## Tube Factor™

### Classic tube booster/overdrive

This is the go-to pedal for superior dynamic control, glossy overtones and all-tube overdrive. Phenomenally easy to tweak, Tube Factor juices up your every sound. It grants you greater tonal control over every note you play, adds lots of presence and punch, and can even spare you costly amp modifications. Simply plug Tube Factor into your amp's front end and enjoy instant tonal bliss!

### Tube Factor

High-voltage tube circuitry, 12AX7 tube
FACTOR 1/2 switches between Clean and Ultra Overdrive
Separate controls for Drive and Output
Voicing control for a huge palette of sounds
Real Bypass
Rugged metal housing
160 x 80 x 215 mm; 1.6 kg / 4 lbs



## Tubeman® MK II

### Tube Guitar Preamp & Recording Station with Integrated RedBox®

Tubeman® MK II is the professional all-tube tone dynamo to go! It offers three separately adjustable channels, each accessible directly via footswitches, and a 3-band EQ section. We tweaked the third channel specifically for lead sounds and added a unique Voicing knob. This hip feature lets you shape tonal characteristics to dial in the trademark sound of your favorite amp. And as if that wasn't enough, we've also included our acclaimed Red Box® speaker simulation to turn Tubeman into the perfect tube-driven guitar recording station!

### Tubeman

High-voltage tube circuitry, 12AX7 tube
3 Channels: Clean, Crunch and Lead
Master triple-band EQ
Voicing control in Lead Channel
Silent channel switching with no delay
Line Out (Power Amp Out) and Mixer Out with Red Box® speaker simulation
Real Bypass
Rugged metal housing
225 x 80 x 215 mm; 2.2 kg / 5 lbs

## Tube Rotosphere™ MK II

The Rotary Revolution:  
Stereo Rotary Cabinet and Tube Saturation in One

Tube Rotosphere® MK II has all the inspirational power of the legendary Leslie® cabinets. It not only puts the response of a tube-powered Leslie at players' toe-tips, it also boasts two rotation speeds and legit-sounding deceleration & acceleration effects. Rotosphere's spectrum ranges from clean to sizzling rock scream. In stereo mode, it serves up all the tonal complexity and dynamics of the real deal, a bona fide Leslie. In fact Tube Rotosphere MK II feels so real, that some of world's most celebrated players won't leave home without it!

### Rotosphere

High-voltage tube circuitry, 12AX7 tube
Drive and Output controls deliver authentic growl
Lifelike Breaker Switch
2 rotary speeds, independent start-up / release for HF and bass rotors
Variable top speeds of both rotors
Mono or stereo input & output
Real Bypass
Rugged metal housing
215 x 80 x 215 mm; 2 kg / 4 lbs



## Replex™

Carefully Crafted Reincarnation of  
the Classic Echoplex® Tube Analog  
Tape Delay

Converging traditional tube circuitry and state-of-the-art digital technology, Replex™ replicates the sound and response of a '60s tape echo with awesome accuracy. And it handles and operates far more conveniently and reliably than the original. The Vintage Factor knob is its grooviest sound-sculpting tool. Twist it to take a trip down memory lane and enjoy everything from modern digital precision to vintage '60s wow, flutter and tape saturation effects.

### Replex

High-voltage tube circuitry, 12AX7 tube
Single or Dual Head mode
Lush reverb effect included
Variable vintage factor from Modern Digital to Vintage Tape
Real Bypass
Rugged metal housing
258 x 80 x 215 mm; 2.4 kg / 5 lbs





# ***Pro Class***

## ***Perfect Tools for Passionate Performers***

As practicing musicians and technicians, we know all about the trials and travails of life on the road. You need tools to make your life easier; we build them! Engineered to inspire, our Pro Class products spark you to deliver stellar performances every night.

Pro Class amps' heritage rings through loud and clear. These amps were imbued with much of the Custom Class' sonic sorcery, and it is this transcendental tone that gives these amps such a big edge over others in

this category. What's more, the same Custom Shop specialists and engineers who brought you the Custom Class maximized Pro Class amps' quality and performance.

Hand-selected tubes, high-end chassis designs and our precision production process in Germany—that's what makes these amps serious performers that match your passion for tone! If nothing but the best will do for you, treat yourself to Pro Class...



## Trilogy™

The smartest All-Tube Amp in its Class

Four world-class tube channels for one stellar performance

Steel-string slingers seeking jaw-dropping tube-tone will hit the jackpot with Trilogy™. Four channels, plus Boost and Sparkle modes, provide a staggering array of six markedly diverse sounds at the touch of a button. Providing plenty of flexibility to keep any pro player happy, this prized amp covers all the bases for all styles of music. And if that brings to mind our very own TriAmp® Custom Class amp, you're right: Trilogy boasts many of its big brother's remarkable qualities! Whatever it is you want—crisp and clean, punchy crunch, sumo-sized overdrive or hi-gain shred—salvation's just a step away, courtesy

of the included footswitch. What's more, our ingenious SmartLoop™ effects routing and the built-in MIDI-features afford you even more sonic possibilities: Configurable in serial or parallel modes, the SmartLoop™ FX circuit automatically recalls its settings for every channel (including on/off). And if six directly accessible presets are not enough, simply plug in a MIDI Stageboard and an outboard signal processor to take that number up to a mind-boggling 128 patches! So who says you can't have it all? Trilogy—the smart amp for real players!

### Trilogy

4 channels, 6 sounds: Clean+Sparkle, Crunch+Boost, Lead, Ultra Lead

SmartLoop™ stores FX loops settings for each channel; serial/parallel

Built-In MIDI for remote control

Power amp: Four EL34 tubes, 100 W

4-way footswitch included

740 x 280 x 258 mm, 21 kg / 46 lbs



## Warp X™

The "Nu" Tube Force

...Two, One - Ignition!

The infernal glow of its eight red-hot tubes says it all: Warp X is the undisputed heavyweight champion in the Nu Metal arena. Look no further than this for rude riffing power. The amp boasts a Clean channel with big, bold and crisp tones and a Warp channel to put a grin on the face of any metal riff-meister.

Warp X is shorthand for the staggering sound pressure of a 120-watt, 6L6 tube-driven power amp prepped to pump out pure dark energy. Featuring a top-notch Clean channel tweaked specifically for heavily effected sounds and a Warp channel that brings new meaning to the term "warped," Warp X offers a ferocious feature set you won't find on any other amp. Check out the Lube button, a sonic lubricant for fluid riffs and leads. Press





Made in Germany  
 Power: 120W  
 Net Weight: 45kg  
 Gross Weight: 48kg  
 Dimensions: 650 x 250 x 250 mm

## VC Series Cabinets

True Vintage Tone

The VC Series finally makes true vintage tone affordable: Sporting genuine Celestion® G12M Greenbacks or Vintage 30s, these cabinets offer the original speakers that own many of rock history's key moments. The road-savvy plywood housing complements the speakers' rich, powerful guitar tone and features dovetailed joints, big pocket handles and castors—this ensures perfect handling on and off stage. Each model is available with either slanted (A) or straight (B) fronts—so you can build the stack as high as you like!

VC cabinets—the first choice for pro tone!



### VC 412 A30/B30

If you dig the assertive thumb of Vintage 30 speakers, these speakers will deliver the definitive sound you're looking for!



### VC 412 A25/B25

Looking for the Greenback's trademark sweet, open tone? Then this version of our VC 412 is for you!

it to alter the amp's distortion dynamics and smooth out the sound for ultimate response to your touch.

But there's more: Warp X sports Effects Loop Assign, a great FX-management tool for allocating external devices to one or both channels. Simply stomp on a single switch to go from a righteous clean sound enhanced with chorus, delay and the like to stupendous Warp sounds without effects getting in the way of your sonic onslaught!! With the optional MSM-1 MIDI Module, you can sync up your amp and external effect devices and switch them simultaneously via a separate MIDI pedal. Gear up for the 21st Century—Get Warped!

## Warp X

2 channels:  
 Clean: Volume, Bass, Mid, Treble, Presence  
 Warp: Gain, Bass, Mid, Treble, Presence, Master  
 120 watts power amp with 4 x 6L6  
 Ingenious FX routing (parallel or serial)  
 Speaker jacks: 1 x 4 Ohms, 1 x 8 Ohms or  
 2 x 16 Ohms, 1 x 16 Ohms  
 Optional MSM 1 module  
 650 x 250 x 250 mm; 20 kg / 45 lbs

**CAUTION**

TO PREVENT THE RISK OF FIRE AND SHOCK HAZARD, ALWAYS UNPLUG THE POWER CORD FROM THE WALL SOCKET BEFORE REMOVING THE COVER. DO NOT OPEN CASE. NO USER SERVICEABLE PARTS HERE. REFER SERVICE TO QUALIFIED SERVICE PERSONNEL.

**MAINBARD OUTPUT (DE WART)**

4 OHMS 8 OHMS 16 OHMS

TO INSTALL MIDI MODULE: DISCONNECT AC POWER CORD BEFORE REMOVING THE COVER.

**WARP X**

Hughes & Kettner

RETURN FUSED SWITCH FOOTSWITCH

**ANCHOR FUSE**

REPLACE FUSE ONLY WITH 250 V / 2 AMP FUSE, TYPE AND RATING.

**FUSE**

**USTC CE**

112 V AC, 50-60 Hz, 120 WATT

CONFORMS IEC 60335-1 AND IEC 60335-2-13

250 V / 2.0 A



## Edition Tube 20<sup>th</sup> Anniversary

The Classic Tube Combo

Four times the tone of its size...

Edition Tube 20th anniversary was introduced last year to celebrate our 20th anniversary with a deluxe version of one of our most successful all-tube combos. Compact and easy to handle, this mighty mite serves up big inspiring tone you wouldn't expect from a combo this small! Its two channels cover the full spectrum from vintage clean to blues-approved crunch and rock lead cream. Edition Tube delivers the goods with authority and

quality persuasive enough to convince hard-line purists. A key factor in this amp's sweet sound is the power amp and special design of the enclosure. The two EL84 tubes supply smooth saturation and compression even at moderate levels, and the combo's closed back enhances low-end response for a sound far bigger and punchier than its size suggests. Plug into Edition Tube 20th anniversary and keep celebrating for decades to come!

### Edition Tube 20

2 independently adjustable channels: Clean with Volume Lead with Gain & Master
3-band EQ
Reverb control
1/4" input jack
Send (for external effects device, Red Box <sup>®</sup> or additional power amp)
Return (for effect return signal)
External speaker jack
Power amp: 20 watts, two x EL 84 tubes
Speaker: 1 x 12" Eminence <sup>®</sup> RockDriver Cream
560 mm x 460 mm x 275 mm; 16 kg/35 lbs



## Red Box® Classic

*The guitar DI-Box with tone*

*Spare the mic and sweeten up the sound!*

Red Box® Classic is the latest version of our industry-standard DI box with speaker simulation. Particularly for live applications, this amazing tool warrants consistent sound quality at every gig and puts an end to crosstalk. Thanks to its clear, direct sound, the Red Box will endear you to every seasoned PA tech—total tonal satisfaction guaranteed. And in the studio, it saves precious time by sparing you the hassles of experimenting with microphone placement. The secret behind many of today's best-sounding guitar tracks is that they are

double-tracked with a microphone and a Red Box Classic. This enables a perfect mix of room ambience and ultra-direct attack. Red Box Classic—the “toneful” way to get the full tone!



### Red Box Classic

Connections:  
Input: 1/4" jack Line and Speaker  
Thru: 1/4" jack  
Output: XLR balanced

Switches:  
Guitar Cabinet Simulator: 4 x 12" or combo; Ground Lift On/Off

Power supply: Battery or 48 V phantom power  
111 x 31 x 65 mm, 0.2 kg/0.4 lbs

## Warp Factor®

*Pure Dark Energy!*

The Warp Factor turns every amp into a ferocious monster with a savage bark and a vicious bite. Drop your axe's tuning, insert Warp Factor between your guitar and the amp's clean channel, and get blown away by the dark, heavy chunk that powers modern metal styles. Don't let its streamlined looks mislead you—Warp Factor goes way beyond conventional distortion stomp boxes—it's a real preamp with a pedal-sized footprint. No battery-powered circuit can deliver the highly charged, low-frequency energy you need for that beastly drop-D sound—hence the included 12 V PSU wall wart. Plug-in and get warped—you'll never look back!



### Warp Factor

Rugged, circular black metal housing  
Warp/Bypass footswitch control  
Gain, Warp, Level  
Sub switch (tone adjust for combos and 4 x 12" stacks)  
12 V PSU (included)  
ø 160 mm; 1 kg/ 2 lbs

# **PLAYERS CLASS**

## ***True Performers for Players***

Ready to rumble? So you need an amp that works in a real band situation and doesn't let you down. How about an amp that not only does that, but also provides inspirational tone and great features—and still doesn't break the bank? Sounds like you? Then try on our Players Class amps for size and rock the crowd!

The time for compromises is over: These amps are made according to the same strict design guidelines as our Pro and Custom Class products—providing you with serious tools featuring top-drawer tone and first-rate musicality. No matter if you are looking for a small session amp or a stack—Hughes & Kettner Players Class amps always provide top bang for the buck!





# MATRIX SERIES

The only 4-channel analog amps with Autostore™ Multi-FX

**THE AMPS THAT STAGE YOUR BREAKTHROUGH: GREAT TONE, UNIQUE FEATURES – GREAT PRICE!**

If you want big sound, but don't have a big budget yet—then check out our awesome Matrix Series! These amps provide all must-have sounds and effects, from clean to blues, rock to warp and back! Matrix delivers the sinfully sweet tone that has turned Hughes & Kettner into a household name for many pro players—these babies even have plenty of stage-compatible power built-in. There is no catch—the only “less” in Matrix is a price that certainly won't bust your budget!

Matrix amps are true analog designs featuring our trademark sound and great quality. What's more, they offer some very

cool and unique features: The Matrix Series offers the world's first amps with four analog channels and unique Autostore FX multi-effects matrix—hence the name. Each of its four channels (Clean, Crunch, Lead and Warp) is able to recall its own multi-effects settings without you having to store them first! So from now on, you set each channel up the way you want it, including Matrix' excellent multi-effects, and use the included 4-way footswitch to simply switch complete sounds! Finally, you can focus entirely on your performance rather than the stressful “stomp-box ballet” when bypassing your external FX-boxes barely in time for the solo. C'mon—join the Matrix!



SC412 Cabinet



Matrix 120 Combo



Matrix 100 Combo

Matrix Head & Combo	SC 412 Cabinet
3 models: Matrix 100 Head, Matrix 100 or 120 Combo	260 Watt
4 analog channels: Clean, Crunch, Lead, Warp	4 x 12" Celestion® RockDriver™ Ultra 65 speaker
Digital Multi FX Chorus, Flanger, Tremolo, Delay, Reverb	8 ohms mono, 2 x 4 ohms stereo
FX Autostore for each channel: Instant recall!	Comfortable grips
Current Feedback Technology for tube-like Tone	Removable casters included
Power amp: 100 W or 120 W Solid State	750 x 810 x 360 mm; 31 kg / 68 lbs
Speaker: 12" Celestion® RockDriver™ speaker (combo)	
4-way footswitch included	
Combo 100: 574 x 500 x 285 mm; 22 kg / 49 lbs	
Combo 120: 644 x 500 x 285 mm; 27 kg / 59,4 lbs	
Head: 750 x 265 x 250 mm; 20 kg / 44 lbs	

INPUT: 117 V / 50/60 Hz  
MAX. POWER CONSUMPTION: 200 WATTS

REPLACE FUSE ONLY WITH 250 V / T 2.5 A TYPE AND RATINGS

USTC  
NET WEIGHT: 20.0 kg  
NET WEIGHT: 44.0 lb  
PART NO.: 771200-0102

**Hughes & Kettner**  
TECHNOLOGY OF TONE  
ENGINEERED IN ST. MENDEL, GERMANY

**MATRIX 100**

Foot Sw.    771476



*Edition Blue 15-R*



*Edition Blue 30-R*



*Edition Blue 60-R*

## **EDITION BLUE R & DFX SERIES**

***Start with a Big Tone***

### ***FAT, EXPRESSIVE TONE THAT INSPIRES YOU TO PLAY!***

Just starting out? The Edition Blue Series makes it fun to play: Compact, easy to carry, a control panel with signature blue backlighting –and most importantly something that’s very hard to find in other amps of this class: fat, expressive tone that inspires you to play! In fact, these amps are so good and responsive that many pro players use them as practice or warm-up amps prior to playing the main stages of this world.

The Edition Blue’s spectacular sound quality is no coincidence. These amps offer a package of sonic goodies unrivalled in quality and assertiveness: Proven analog preamp circuitry, tone-maximizing 15-, 30- or 60-watt Current Feedback power amps and premium speakers built by world-class manufacturers Celestion® and Jensen®.

Pick the Edition R (with Spring Reverb) or Edition DFX (with dual Digital FX) amp that’s right for you and get ready for prime time!

### ***EDITION BLUE 60-R OR DFX***

From room to stage levels, the 60-watt Edition Blue 60 has what it takes to make you a winner in every musical situation. Featuring a 12" Celestion speaker.

### ***EDITION BLUE 30-R OR DFX***

Sumo-sized sound in a posh looking package –that about sums up Edition Blue 30. The perfect amp for practicing at home and jamming with pals. Featuring a 10" Jensen® speaker.

### ***EDITION BLUE 15-R OR DFX***

Never judge a book by its cover –this mighty mouse roars, supplying a level of tonal quality unprecedented in its class! This compact practice amp delivers fat, lively and richly detailed tone. Featuring a specially tuned 8" Celestion® speaker.







**Edition Blue 15 DFX**



**Edition Blue 30 DFX**



**Edition Blue 60 DFX**

### **Edition Blue R & DFX 15/30/60**

Choice of „R“ (Spring Reverb) or „DFX“ (Dual digital FX) models

2 Channels: Clean and Overdrive

3-band EQ

CD-player Input

Effects:

R Series - Spring Reverb

DFX Series - Dual Digital Multi FX : Chorus/Flanger/Delay & Digital Spring Reverb

Current Feedback Technology for tube-like Tone

Power amp: 15, 30 or 60 W Solid State

Speaker: 8" Celestion®  
10" Jensen  
12" Celestion®

Control panel with blue backlighting

1- or 2-way footswitch connector (30/60 only)

FX loop (30/60 only)

Dimensions: 15: 404 x 375 x 195 mm; 8 kg/18 lbs

30: 440 x 410 x 220 mm; 10 kg/22 lbs

60: 490 x 445 x 270 mm; 14 kg/32 lbs





# HKBA HUGHES & KETTNER BASS AMPLIFICATION

**FEEL THE EARTH MOVE EVERY TIME.**

Bass is the musical bottom line, the baritone bond that ties groove and harmonies together. With the responsibility of holding down the bottom firmly in mind, bass players demand amps that deliver sumo-sized tone. No room for lean cuisine here.

Hughes & Kettner has designed tailored solutions for bass players for almost as long as we have been making guitar amps. Though history teaches that the sound of guitar-driven rock is rooted in very specific American bass amp circuitry, a bass amp patterned on a guitar rig won't do for you. You're seeking a breed apart, a serious tool with all the thrust it takes to make the earth more. A tone machine that does it all from bright to brutal and from wooly to wiry. A subsonic dynamo that inspires you to turn up the best lines.

Determined to exceed your expectations, we design bass amps with our trademark attention to musical detail. Our company's contingent of bass players won't settle for anything less. And that's a performance promise you can take us up on at any time! Regardless of what you're looking for in a bass rig—boutique mystique, a sensible rig for the working pro or your first real bass kick—look no further than HKBA!





## BASSBASE 600 ABSOLUTE BASS

**THE NON-COMPROMISE CUSTOM CLASS BASS HEAD**

BassBase is the place where massive sound pressure and articulate tone converge. Widely hailed as a contemporary classic, this tower of power is numerous pro players' first-choice rig courtesy of its substantial qualities, tonal flexibility and virtually unlimited power. BassBase 600 is the ultimate head for bassists seeking total control over every detail of their sound.

With painstaking effort, our engineers succeeded in tuning the BassBase's input stage to retain all the subtleties of every instrument's inherent tone. The Gain knob dials in the perfect level for the post input EQ circuitry. Simply saturate the preamp tube by twisting this knob to dial in growling rock-approved tone. The signal then passes through a classic Bass/Treble voicing section and two alternative sets of our unique

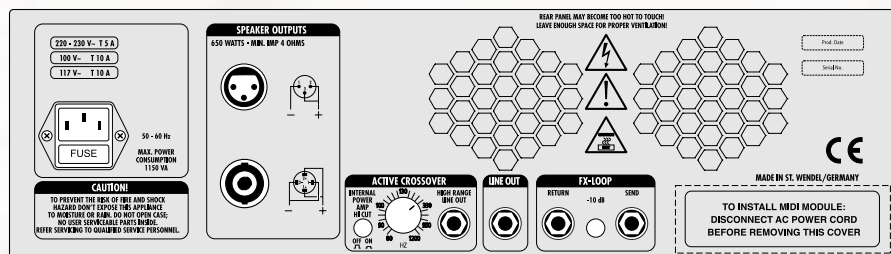
Varimetric™ 2-band semi-parametric EQ. This dual EQ section provides instant access to two different sounds at the touch of a button—the perfect tool for switching from an electric to an acoustic bass on the fly. The high-quality, transformer-balanced DI Out delivers great direct-to-desk sound. Its notch filter effectively eliminates annoying stage rumble. And more than 1,000 watts of continuous output power will forever put an end to your headroom concerns. In a nutshell, the BassBase 600 is simply the most powerful and precise tool on the market. No other amp can transform your ideas about tone into reality with such ease and authority!

Our Quantum cabinets are perfect matches for BassBase amps!



## BASSBASE 600

- Tube preamp with Bass/Treble-EQ
- Two switchable Varimetric™ parametric EQ channels
- Adjustable Notch filter suppresses stage resonances
- Power amp: 650 W Current Feedback
- Balanced DI Out
- Parallel effects loop
- Active crossover for blamping
- 19" HU; 18.5 kg / 41 lbs



# QUANTUM SERIES SUPERIOR BASS AMPLIFICATION

**GRAVITY-DEFYING GROOVE MONSTERS:  
LIGHT WEIGHT, SOUND GREAT!**

Amazingly light, every pound of a Quantum amp packs a very big punch. And with awesome tube tone to boot, they are engineered for instant gratification today and sustained satisfaction for many tomorrows to come. From the 250-watt QC 310 combo to the 600-watt flagship QT 600 head, these amps put many a heavyweight to shame! For the first time, our unique Dynavalve® power amp technology weds the warmth and expansive sound of traditional all-tube machines to the precision response of leading-edge solid-state amps. This ingeniously engineered power amp circuit features a phase splitter tube, lending every amp its trademark tone and bright blue glow. For a more profound musical experience, take the Quantum leap!

## DYNAVALVE® POWER AMP TECHNOLOGY

A genuine marvel of audio engineering, our patented Dynavalve technology delivers the highly desirable transient response of all-tube power amps. This unique technology serves up enormous pressure and punch and makes Quantum amps way superior to conventional solid-state designs. How can an amp conjure such heavy-duty tube tone yet weigh even less than comparable solid-state designs? The secret to this sonic sorcery is a single tube in the phase splitter stage.



## QUANTUM COMBOS

TubeTouch™ Circuit
4-Band Parallel EQ, Tube Growl Compressor
Power amp: 250 W / all others 400 W Dynavalve
Effects loop, DI-Out, Phones
Speaker:
QC 310: 1 x 10" Dual Cone
QC 412: 1 x 12" DuraDome™
QC 415: 1 x 15" DuraDome™
QC 421: 2 x 10" Dual Cone Neodymium
Dimensions:
QC 310: 500 x 505 x 350 mm; 17 kg / 38 lbs
QC 412: 550 x 550 x 350 mm; 19 kg / 42 lbs
QC 415: 600 x 620 x 400 mm; 24 kg / 53 lbs
QC 421: 600 x 620 x 400 mm; 29 kg / 64 lbs

## QUANTUM COMBOS

The four Quantum combo models' identical preamp sections sport an array of impressive features. Fine-tuned for active and passive basses, the audiophile input stage with its vast gain range provides the underpinning for the amps' tremendous performance power. Instant and musical tone-shaping control comes courtesy of the parallel four-band EQ section. With these no-nonsense tools, dialing in the sound you want is dead easy. Punch and HF Character switches are on board to enhance your sound-sculpting pleasure. And perhaps best of all, the nifty Tube Growl knob controls tube saturation level, compressing the signal and endowing it tube-driven punch and assertiveness. Quantum Combos are truly in a class of their own!



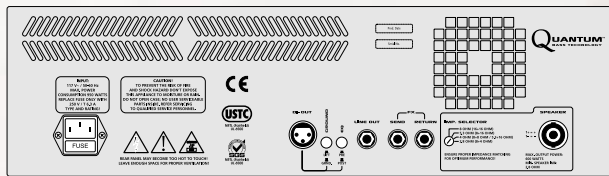
<b>INPUT</b> 117 V / 50-60 Hz MAX. POWER CONC. 250 WATTS REPLACE TUBE ONLY WITH 250 V / 7.25 A TYPE AND RATING	<b>BEAR PANEL MAY BECOME TOO HOT TO TOUCH!</b> LEAVE ENOUGH SPACE FOR PROPER VENTILATION!	<b>CAUTION!</b> TO PREVENT THE RISK OF FIRE AND SHOCK, HAZARDOUS ELECTRICITY IS PRESENT TO DISASSEMBLE OR REPAIR. DO NOT OPEN CASE. NO USER SERVICEABLE PARTS INSIDE. REFER SERVICING TO QUALIFIED SERVICE PERSONNEL.	<b>EXTERNAL SPEAKER</b> SERIAL TO INTERNAL SPEAKER 8 Ω	SERIAL TO INTERNAL SPEAKER OFF	SERIAL TO INTERNAL SPEAKER OFF	<b>OUTPUT</b> LINE OUT FX SEND FX RETURN	USTC NET 07/09/01 11 000	CE	ENEC NET 07/09/01 11 000
--	--	--	--	---	---	---	--------------------------------	----	--------------------------------



## QUANTUM QT 600 HEAD

With its 600-watt Dynavalve® amp, the QT 600 delivers first-rate sound and ample power for every sonic scenario. The amp's two inputs unleash the tone of any passive or active bass, with the parallel 4-band EQ providing instant tonal bliss. Four switchable filters shape the basic tonal character: Punch emphasizes the low and high ends without altering level. Bass Shape attenuates the bottom end. Mid Boost pumps up the mids for muscular rock tone. And HF Character underscores the shimmering overtones at the top end of the frequency spectrum. The awesome Tube Growl knob adds typical tube-driven compression and saturation, while a variable selector matches output power to suit connected cabinets. The QT 600's balanced DI Out offers Pre and Post routing options to patch either the instrument's or the amp's signal directly to the mixing console. QT 600—the quintessence of Quantum quality!

QT 600
TubeTouch™ Circuit
4-Band Parallel EQ
Tube Growl Compressor
Bass Shape, Mid-Boost, Pre/Post EQ switches
Power amp: 600 W Dynavalve
Effects loop, DI-Out, Phones
Cover Bag, Footswitch incl.
550 x 195 x 320 mm; 14 kg / 31 lbs



## QUANTUM CABINETS

**HEAVYWEIGHT TONE IN AN EXTRAORDINARILY LIGHT PACKAGE**



This high-power version of the classic bass bin serves up finely contoured, refreshingly crisp tone – at a fraction of the classic’s weight thanks to the speakers!

### QS 810 PRO

8 x 10" Neodymium speaker
1800 watts, 4 ohms
670 x 118 x 415 mm
62 kg / 137 lbs



This compact 8 x 10" bin packs big and bold sound into a remarkably portable cab thanks to its highly efficient 10" Neodymium speakers.

### QS 610 PRO

6 x 10" Neodymium speaker
1350 watts, 5.3 ohms
670 x 905 x 415 mm
46 kg / 101 lbs

The new QS cabinets put out heavyweight tone in an extraordinarily light package. Quantum Pro cabinets are loaded with Eminence® Neodymium speakers that react faster and with far greater precision than traditional woofers—resulting in greater sound control and hair-trigger response to your touch! 10" speakers feature Dual Cone technology; 12" and 15" woofers boast a newly developed DuraDome® design that renders overtone spectrums unrivalled in depth, breadth and congruity. Phase and directivity problems commonly associated with horns are history. Classic plywood, rugged steel grilles, Speakon® connectors and no-compromise workmanship make Quantum Pro cabinets robust and reliable sidekicks for quality-conscious bassists.



This state-of-the-art 4 x 10" bass cab pumps out crisp, tight low end, finely textured mids and expansive, shimmering top end!

### QS 410 PRO

4 x 10" Neodymium speaker
900 watts, 8 ohms
670 x 600 x 405 mm
32 kg / 71 lbs



The solution for well-rounded and very musical soundscapes, delivering wondrously woody mids, high performance—and incredibly low weight. All the fun – none of the back-pains!

### QS 2115 PRO

2 x 10" / 1 x 15" Neodymium speaker
750 watts, 2.8 ohms
670 x 755 x 405 mm
34 kg / 75 lbs



This ultra-compact powerhouse is the ideal complement to bigger bins and a sweet stand-alone solution built to satisfy professional performance requirements.

### QS 210 PRO

2 x 10" Neodymium speaker
450 watts, 4/16 ohms
670 x 415 x 405 mm
21 kg / 46 lbs



The perfect partner for QS 410 or QS 210 with the typical earthy low end and woody mid response only a 15" woofer solution delivers.

### QS 115 PRO

1 x 15" Neodymium speaker
300 watts, 8 ohms
670 x 600 x 405 mm
23 kg / 51 lbs



# BASSKICK SERIES

A REAL KICK IN THE BASS

STAGE-PROOF BASS PUNCH FOR PLAYERS

BassKicks are serious bass amps that deliver in every sonic scenario from the rehearsal room to the stage. Thanks to Hughes & Kettner's unique TubeTouch™ input and DynaClip™ peak-limiting technology, all BassKick models provide the punch, headroom and tone typically associated with tube amps. BK 200 and BK 300 even include some top-notch features straight out of the premium Quantum™ series, such as the parallel EQ design and Tube Growl compression. Every development dollar was spent on tone and performance rather than gimmicks. The results are sure to delight—rock-solid amps offering great tone, instant gratification and enduring value at affordable prices!

BK 100
TubeTouch™ input circuit
3-band Smooth Punch EQ
Power amp: 100 W Current Feedback
Custom-designed 15" Eminence® speaker
HF horn
498 x 565 x 355; 25 kg / 55 lbs

BK 200 & 300
TubeTouch™ input circuit
4-band parallel EQ
Growl Compressor
Power amp: 200 W or 300 W Current Feedback
Custom-designed 15" Eminence® speaker
Switchable HF horn
BK 200: 552 x 604 x 385; 32 kg / 70 lbs
BK 300: 611 x 625 x 385; 36 kg / 79 lbs

Made in Germany

Input: 230 / 250 V / 240 V / 50 / 60 Hz

Max. Power Consumption: 812 Watts

Voltage Setting: 230 V / 250 V / 240 V

Fuse: 250 V / 12 A

Caution! To prevent the risk of fire and shock hazard don't expose this appliance to moisture or rain. Do not open case; no user serviceable parts inside. Refer servicing to qualified service personnel.

Rear panel and ventilation openings may become too hot to touch! Leave enough space for proper ventilation!

EXTERNAL SPEAKER 4-8 ohms

BALANCED LINE OUT RETURN SERIES PUNCH FOOT SWITCH



BK 100



BK 200



BK 300



# User & Friends



**Paul Crook** Meat Loaf



**Taxiride**



**Ritchie Sambora**  
Bon Jovi



**Michael Thomas**  
Ashba



**Chris Henderson**  
3 Doors Down



**Stephen Duffy**  
Robbie Williams



**Brad Whitford**



**Jimmy Coup**  
Andrew WK Band



**Rob Haris** Jamiroquai



**Tommy Skeoch** Tesla



**Audley Freed**



**Davey Johnstone**  
Elton John



**Acey Slade** Murderdolls



**Don Airey** Deep Purple



**Edguy**



**Billy Gibbons** ZZ Top



**Chris Childs** Thunder



**Black Majesty**



**Thomas Stolle**  
Silbermond



**Jörg Weibelberg**  
Jeanette Biedermann



**Ethan Farmer**  
Christina Aguilera



**Thomas Blug**



**Kesici**



**Regicide**



*Sphinx*



*Kat Dyson*



*Richard Jones  
Stereophonics*



*Ralph Rieckerman*



*John Levén Europe*



*Nuno Bettencourt  
Population 1*



*Theory of a Dead Man*



*Superior*



*Alex Lifeson Rush*



*Mandy Mayer*



*Kat Spazzy Spazzys*

*Adam Dutkiewicz & Joel Stroetzel, Kill Switch Engage • Alex Lifeson, Rush • Akio Shimizu, Anthem • Akira Wada, Prism • Andrew W K Band • Andy Strange • Acey Slade, Murderdolls • Audley Freed • Claus Fischer, Germany's Bass Player No. 1 • Bernie Worrell • Bill Coley • Billy Gibbons • Brad Whitford • Brett Garsed • Brett Scallions, Fuel • Carl Bell, Fuel • Chandler Kinchla • Charly Hunter • Chris Henderson, 3 Doors Down • Chris Childs, Thunder • Counting Crows • Craig Ross • Danny Miranda, Queen/Paul Rodgers Band • Dave Navarro, Red Hot Chili Peppers/Jane's Addiction • Dave Polinski • Davey Johnstone, Elton John Band • Dominik Krämer, TV Total Show • Don Airey, Deep Purple • Doyle Bramhall • Eddie Kramer • Edguy • Eric Hanson • Frank Lennartz, Wonderwall • Gabe Rosales • Gavin Menzies • Glass Jaw • Greg Brimson • Grog • Halloween • Helmut Zerlett • InMe • Jakob Hansonis, Grönemeyer Band • Jamie Moses, Queen/Paul Rodgers Band • Jan Janssen, Regicide • Jean-Jacques Kravetz • Jeff Beck • Jeff Stinco, Simple Plan • Jim Harper • Jim Weider • Jimmy Herring • Jiro Okada, Prism • Joe Beck • Joe Perry • Joe Pessia • Jörg Weisselberg, Jeanette Biedermann • John Jorgensen • John Leven, Europe • John Shanks • Johannes Stolle, Silbermond • Johnny Marr • Jon Lord • Jonny Lang • Jonas Pfetzing, Juli • Justin Beck • Kat Dyson • Kat Spazzy, Spazzys • Keith Airey, Tom Jones • Keith Scott • Kyoji Yamamoto, Bow Wow Wow • Luke Szabo, Brock Downey • Lenny Kravitz • Malte Hunold, Regicide • Mandy Mayer • Mark Epstein • Mark Karen • Matt Sorum • Meredith Brooks • Michael Müller, Superior • Michael Thomas • Mike Rowe • Monster Magnet • Natalie Imbruglia Band • Nauto Shibata, Anthem • Neville Malcolm • Nuno Bettencourt, Extreme/Population 1 • Otep • Paul Crook, MeatLoaf/Anthrax • Paul Diethelm • Paul Gilbert • Peter Frampton • Peter Stroud • Phil Cranham • Phil Emmanuel • Phil Mulford • Ralph Rieckerman • Randy Mion, Somnia Estatus • Reeves Gabrels • Rich Robinson • Richard Jones, Stereophonics • Richie Sambora • Rob Haris, Jamiroquai • Rob Crime, Hinge • Robbie Galdwell • Ruben Ruiz • Sanctuary Studios • Schürzenjäger • Sebastian Bach • Sex Machine Guns • Simon Triebel, Juli • Slash • Smokie • Sphinx • Stefan Zelzer, Jeanette Biedermann • Stephen Bruton • Steve Lukather • Stevie Janevski, Black Majesty • Stephen Duffy, Robbie Williams Band • Stuart Ches Fraser, John Farnham Band • Takayoshi Ohmura • Taxiride • Theory of a Dead Man • Tod Trevor, Mustang/Warped • Tom Kurpiewski, Hinge • Thomas Blug, European Strat King • Three Days Grace • Tim Smith • Todd Wolf • Thomas Stolle, Silbermond • Tommy Jordi, Rosenstolz • Tommy Skeoch, Tesla • Tony Z. • Trent Crawford, One Dollar Short • Troy Lancaster • Uwe Bossert, Reamon • Wade Dunn, Developed • Warren Haynes • Wilt • Zlatko Perica, DJ BoBo/ Tangerine Dream*

*Hughes & Kettner*  
TECHNOLOGY OF TONE

HUGHES & KETTNER®

St. Wendel, Germany

Phone. +49 - (0) 68 51 - 905 0

Fax. +49 - (0) 68 51 - 905 100

[info@hughes-and-kettner.com](mailto:info@hughes-and-kettner.com)

[www.hughes-and-kettner.com](http://www.hughes-and-kettner.com)

## Free Manuals Download Website

<http://myh66.com>

<http://usermanuals.us>

<http://www.somanuals.com>

<http://www.4manuals.cc>

<http://www.manual-lib.com>

<http://www.404manual.com>

<http://www.luxmanual.com>

<http://aubethermostatmanual.com>

Golf course search by state

<http://golfingnear.com>

Email search by domain

<http://emailbydomain.com>

Auto manuals search

<http://auto.somanuals.com>

TV manuals search

<http://tv.somanuals.com>