

Thank You

Thank you for choosing Humminbird®, America's #1 name in fishfinders. Humminbird® has built its reputation by designing and manufacturing top-quality, thoroughly reliable marine equipment.

Contact our Customer Resource Center at either 1-800-633-1468 or visit our website at www.humminbird.com.

Feature Overview

This sheet describes two new features that have been added to your 900 Series:

- Screen Capture
- Side Imaging Cursor.

Screen Capture

When Screen Capture is enabled (from the Accessories menu tab), pressing the MARK key creates a saved screen capture on the optional-purchase MMC/SD card installed in your unit's card slot (when you have an optional-purchase MMC/SD card installed).



NOTE: You must have an optional-purchase MMC/SD card installed for the screen capture feature to work.

NOTE: If your unit does not have a MARK key, use the Preset View key on the far right and top of the keypad instead.

1. Enabling Screen Capture

Turning on Screen Capture allows you to capture screen images using the MARK key (or far right Preset View key if your unit does not have a MARK key). All menus, dialog boxes, warnings and messages are captured and saved automatically. You can view these captures on the Screen Capture View, which shows thumbnails of the screen captures, three at a time.

To turn on Screen Capture:

1. Highlight Screen Capture on the Accessories Menu.
2. Select On to enable, or Off to disable this feature.

2. Making a Screen Capture

Once Screen Capture is enabled from the Accessories Menu Tab, perform the following steps to capture a screen:

NOTE: The MARK key only functions if you have a GPS receiver connected, or if you have enabled Screen Capture from the Accessories menu tab. If you have enabled the Screen Capture feature, pressing the MARK key (or far right Preset View key if your unit does not have a MARK key) still creates a waypoint, but it also captures the screen image to the optional-purchase MMC/SD card.

1. Make sure you have installed an optional-purchase MMC/SD card into your card slot.
2. From any view you want to capture, press the MARK Key (or the far right Preset View key if your unit does not have a MARK Key). When you start a screen capture, you will see a message that a waypoint has been created at the point where your cursor is on the screen, and the screen will freeze. A status dialog box will appear that shows the progress of the save, and that displays the numbered filename assigned to the .BMP file that is being created, along with the percentage completed status.

NOTE: Navigation is not affected by the Screen Capture feature. Also, if Screen Capture is enabled but there is no GPS receiver connected, pressing the MARK key (or far right Preset View key if your unit does not have a MARK key) will capture the screen image and display an error saying that a GPS position fix is required to create a waypoint.

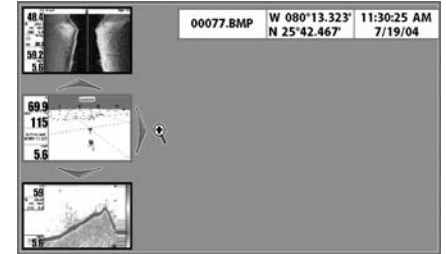
NOTE: The speed of the capture depends on the type of card you use; in general, SD cards capture the screen faster than MMC cards do.

Screen Capture and Side Imaging Cursor

531452-1_A

3. Viewing Screen Captures

1. Make sure that the optional-purchase MMC/SD card used to capture the screens is installed in your card slot.
2. Press the VIEW Key until you see the Screen Capture View.
3. The Screen Capture View displays up to three thumbnails of these screen captures at a time. You can scroll through the whole list of thumbnails of screen captures in this view using the 4-WAY Cursor keys. The selected thumbnail will be highlighted with red arrows. See the full-sized image by selecting a thumbnail (using the Up or Down 4-Way Cursor keys), then using the Right 4-Way Cursor key to view the full image. A red border around the full-size screen capture indicates that it is just a screen capture, not a "live" view. You can delete the selected image, or all captured images, using Delete Image or Delete All Images from the X-Press™ menu.



NOTE: You may view data files associated with each screen capture by removing the MMC/SD card from your unit and installing it in your optional-purchase MMC/SD card reader connected to a PC. Use Windows Explorer to see the contents of your MMC/SD card; you will notice that a .DAT (may show up as .TXT) file is created for every .BMP screen capture; this data file includes the thumbnail view, and is required in order to be able to view the screen capture from your 900 series unit, so don't delete these files.

4. Deleting Captured Images

Once you have images captured and stored on your optional-purchase MMC/SD card, you may delete selected images, or all images at once, using the X-Press™ Menu when in the Screen Capture View.

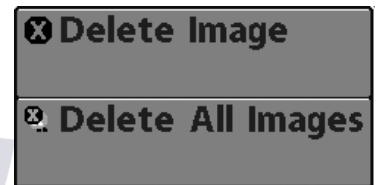
Delete Image (Screen Capture view only)

Delete Image allows you to delete a single screen capture image from the Screen Capture View. This menu option is only available when you have an optional-purchase MMC/SD card installed and you are in Screen Capture view.

To delete a single screen capture image:

1. From the Screen Capture View, select the image you want to delete, then highlight Delete Image on the X-Press™ Menu.
2. Use the UP or DOWN 4-WAY Cursor keys to select the image name you want to delete. A confirmation dialog box will ask if you want to delete this image. Select Yes to delete, or No to change your mind. When you select Yes, the unit will beep and freeze while it removes the image from memory, while a message will appear telling you that the image is being deleted, and again once the image has been successfully deleted.

NOTE: The speed of the delete depends on the type of card you use; in general, SD cards delete images faster than MMC cards do.



Delete All Images (Screen Capture view only)

Delete All Images allows you to delete all the images at once from the Screen Capture View. This menu option is only available when you have an optional-purchase MMC/SD card installed and you are in Screen Capture view.

To delete all screen capture images at once:

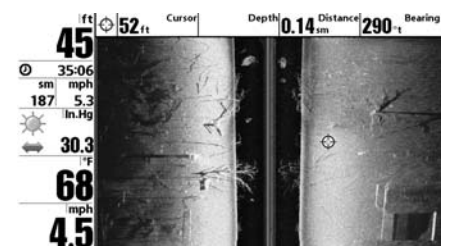
1. From the Screen Capture View, highlight Delete All Images on the X-Press™ Menu.
2. A confirmation dialog box will ask if you want to delete all images. Select Yes to delete, or No to change your mind.

Side Imaging Cursor (981 and 987 only)

In the Side Imaging View or active side of a Side Imaging split view, press the 4-WAY Cursor key to activate the Side Imaging cursor. The Side Imaging cursor behaves very similarly to the regular sonar cursor: the display stops scrolling and you can use the cursor to point to objects of interest and determine their position.

Since it is not possible to accurately determine the water depth off the boat's path, the depth is only displayed when the cursor is near the center line (the boat's path).

You can mark a waypoint at the location of the Side Imaging cursor. The waypoint will be positioned off to the side of where the boat had been when the sonar return selected by the cursor was acquired. The waypoint is placed where the object you are pointing to is located, assuming that the object was on the bottom and that the bottom was flat. Since this is only an approximation, the waypoint may be slightly out of position, but should be reasonably close.



Free Manuals Download Website

<http://myh66.com>

<http://usermanuals.us>

<http://www.somanuals.com>

<http://www.4manuals.cc>

<http://www.manual-lib.com>

<http://www.404manual.com>

<http://www.luxmanual.com>

<http://aubethermostatmanual.com>

Golf course search by state

<http://golfingnear.com>

Email search by domain

<http://emailbydomain.com>

Auto manuals search

<http://auto.somanuals.com>

TV manuals search

<http://tv.somanuals.com>