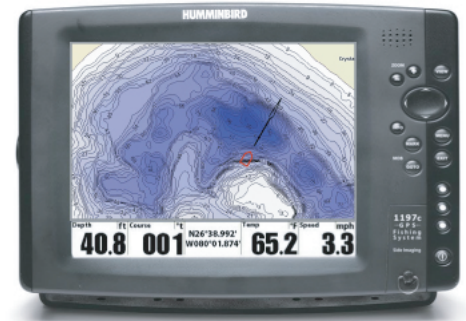


## LakeMaster - Humminbird Compatability List



New Humminbird 2010 GPS/Sonar models will come preloaded with the updated software to run LakeMaster GPS charts.



For 2009 and older Humminbird GPS/Sonar models, you will be required to download an update from the Humminbird Website [www.humminbird.com](http://www.humminbird.com). Once you have registered your product you will have access to the update, which will require you to download a file to a blank SD card. After the download is complete, insert the SD card into your GPS unit, follow the on screen instructions, and your unit will now display the LakeMaster Humminbird Digital Fishing Charts.

### LakeMaster - Humminbird Unit Upgrades & Availability Schedule For:

Model	Software Upgrades available at <a href="http://www.humminbird.com">www.humminbird.com</a>
785c2 cp	Available Now
785c2i cp	Available Now
786ci cp	Available Now
787c2 / NVB	Available Now
787c2i / NVB	Available Now
788ci / NVB	Available Now
788c / NVB	Available Now
797c2 SI / NVB	Available Now
797c2i SI / NVB	Available Now
798ciSI / NVB	Available Now
798cSI / NVB	Available Now
858c	Available Now
898cSI	Available Now
Matrix 97	Available Now

Model	Software Upgrades available at <a href="http://www.humminbird.com">www.humminbird.com</a>
917c	Available Now
937c/937cDF	Available Now
947c 3D	Available Now
955c cp	Available Now
957c / NVB	Available Now
958c / NVB	Available Now
967c 3D	Available Now
997cSI / NVB	Available Now
998cSI / NVB	Available Now
1155c cp	Available Now
1157c / NVB	Available Now
1197cSI / NVB	Available Now

## Free Manuals Download Website

<http://myh66.com>

<http://usermanuals.us>

<http://www.somanuals.com>

<http://www.4manuals.cc>

<http://www.manual-lib.com>

<http://www.404manual.com>

<http://www.luxmanual.com>

<http://aubethermostatmanual.com>

Golf course search by state

<http://golfingnear.com>

Email search by domain

<http://emailbydomain.com>

Auto manuals search

<http://auto.somanuals.com>

TV manuals search

<http://tv.somanuals.com>