

These user's setup instructions cover typical user environments. The on-screen messages may differ depending on the level of your hardware and software. In some cases you may need to vary the setup procedures. For more information, refer to your computer or operating system manuals or consult your system administrator or dealer.

Ces instructions de configuration s'appliquent aux environnements d'utilisation typiques. Les messages affichés à l'écran peuvent varier en fonction de votre configuration matérielle et logicielle. Dans certains cas, il peut être nécessaire de changer les procédures de configuration. Pour de plus amples informations, veuillez consulter les manuels de votre ordinateur et de votre système d'exploitation, ou consultez l'administrateur de votre système ou votre revendeur.

Diese Anweisungen zur Installation durch den Benutzer gelten für typische Betriebsumgebungen. Die Bildschirmmeldungen können je nach Art der verwendeten Hardware und Software auch anders lauten. In einigen Fällen müssen die Einstellungsschritte unter Umständen abgeändert werden. Weitere Informationen finden Sie im Computer-order Betriebssystemhandbuch, oder wenden Sie sich an Ihren System-administrator oder Fachhändler.

Estas instrucciones sobre la configuración abarcan típicos entornos de usuario. Los mensajes en pantalla pueden diferir según el nivel de su hardware y software. En algunos casos, puede que sea necesario variar los procedimientos de configuración. Para mayor información, consulte los manuales de su ordenador o sistema operativo, o consulte a su administrador de sistema o proveedor.

Queste istruzioni utente per il setup coprono ambienti utente tipici. I messaggi su - schermo possono variare a seconda del livello del proprio hardware e software. In alcuni casi puo' essere necessario modificare le procedure di setup. Per maggiori informazioni, fare riferimento ai manuali del proprio computer o del sistema operativo, oppure consultare il proprio amministratore di sistema o il proprio rivenditore.

これらのユーザーズセットアップガイドでは、一般的なユーザー環境についてサポートしています。画面上のメッセージは使用されているハードウェアのレベルやソフトウェアの種類によって異なる場合があります。また、場合によっては、セットアップ手順の変更が必要な場合もあります。詳細につきましては、現在使用中のコンピュータに付属のコンピューターマニュアルかオペレーションマニュアルを参照するか、システム管理者か

販売元にお尋ね下さい。

## **DANGER**

To avoid shock hazard:

Do not remove the covers.

Do not operate this product unless the stand is attached.

Do not connect or disconnect this product during an electrical storm.

The power cord plug must be connected to a properly wired and grounded power outlet.

Any equipment to which this product will be attached must also be connected to properly wired and grounded power outlets.

To isolate the monitor from the electrical supply, you must remove the plug from the power outlet. The power outlet should be easily accessible.

## **DANGER**

Pour éviter les risques d'électrocution :

Ne retirez pas les capots du moniteur.

N'utilisez pas ce produit si le socle n'est pas fixé.

Ne connectez, ni ne déconnectez ce produit pendant un orage.

Le câble d'alimentation doit être connecté à une prise électrique correctement mise à la terre et en bon état de marche.

Tout équipement auquel ce produit est relié doit être également connecté à une prise correctement mise à la terre et en bon état de marche.

Pour isoler le moniteur de la source d'alimentation électrique, vous devez le débrancher de la prise électrique. Cette prise doit être facile d'accès

## **GEFAHRENHINWEIS**

Um die Gefahr eines elektrischen Schlags zu vermeiden, folgendes beachten:

Unter keinen Umständen die Abdeckungen abnehmen.

Das Produkt nicht in Betrieb nehmen, wenn der Sockel nicht montiert ist.

Das Gerät nicht während eines Gewitters an eine Steckdose anschließen oder von ihr trennen.

Das Netzkabel ist an eine ordnungsgemäß verdrahtete und geerdete Steckdose anzuschließen.

Jedes Gerät, mit dem dieses Produkt verbunden wird, muß ebenfalls an eine ordnungsgemäß verdrahtete und geerdete Steckdose angeschlossen werden.

Um den Monitor von der Stromversorgung zu trennen, muß der Stecker aus der Steckdose gezogen werden. Die Steckdose sollte leicht zugänglich sein.

## **GEVAAR**

Ga als volgt te werk om het gevaar van een elektrische schok te voorkomen: Verwijder in geen enkel geval de kap.

Stel dit produkt alleen in werking als de voet is bevestigd.

Sluit dit apparaat niet aan op, of verbreek de aansluiting van dit apparaat niet van een contactdoos tijdens onweer.

Het netsnoer moet worden aangesloten op een gearde contactdoos met correcte bedrading.

Ook alle apparatuur waarop dit produkt wordt aangesloten moet zijn aangesloten op een contactdoos met correcte bedrading.

Om het beeldscherm te ontkoppelen van de netvoeding, dient u de stekker uit de contactdoos te trekken. De contactdoos dient goed toegankelijk te zijn.

## **PELIGRO**

Para evitar riesgos de descargas eléctricas:

No retire bajo ningún concepto las cubiertas.

No maneje el monitor sin antes acoplar el soporte.

No conecte ni desconecte el equipo de una toma de alimentación durante una tormenta eléctrica.

El cable de alimentación debe estar conectado a un enchufe debidamente cableado y con toma de tierra.

Cualquier equipo al que se vaya a conectar este producto también debe estar conectado a tomas de alimentación cableadas y conectadas a tierra correctamente.

Para aislar el monitor del suministro eléctrico, debe retirar el enchufe de la toma de alimentación. Esta toma deberá ser de fácil acceso.

## **PERICOLO**

Per evitare il rischio di scariche elettriche:

Non rimuovere nessuna parte del telaio.

Non accendere il prodotto se il piedistallo non è stato montato.

Non collegare o scollegare il prodotto nel corso di un temporale.

La spina del cavo di alimentazione deve essere collegata ad una presa di corrente con messa a terra, installata in maniera appropriata.

Le apparecchiature a cui il prodotto viene attaccato devono essere collegate a prese di corrente con messa a terra, installate in maniera appropriata.

Per isolare il monitor dalla corrente elettrica, staccare la spina dalla presa di alimentazione, che deve essere facilmente accessibile.

## **PERIGO**

Para evitar o perigo de choques eléctricos:

Não retire as coberturas.

Não utilize este produto antes de montar a base.  
Não ligue nem desligue este produto durante uma tempestade eléctrica.  
O cabo de alimentação deve ser ligado a uma tomada eléctrica devidamente ligada à terra.  
Qualquer equipamento ligado a este produto deve estar ligado a tomadas eléctricas devidamente ligadas à terra.  
Para isolar o monitor da fonte de alimentação, retire a ficha do cabo de alimentação da tomada eléctrica. A tomada eléctrica deve ser de fácil acesso.

### **FARE**

Sådan undgår du elektrisk stød:  
Kabinettet må under ingen omstændigheder fjernes.  
Undgå at anvende dette produkt, uden at vippe/drejefoden er monteret.  
Undgå at tilslutte eller frakoble dette produkt i tordenvejr.  
Netledningen skal være tilsluttet en korrekt jordet stikkontakt med korrekt ledningsføring.  
Alt udstyr, som tilsluttes dette produkt, skal også være tilsluttet korrekt jordede stikkontakter med korrekt ledningsføring.  
For at isolere skærmen fra strømforsyningen, skal stikket tages ud af stikkontakten. Stikkontakten bør være let tilgængelig.

### **FARE**

Slik unngår du fare for elektrisk stød:  
Ikke ta av dekslene.  
Ikke bruk produktet dersom sokkelen ikke er montert.  
Ikke koble produktet til eller fra under tordenvær.  
Pluggen på strømedningen må kobles til korrekt montert og jordet strømuttak.  
Utstyr som dette produktet eventuelt blir koblet til, må også kobles til korrekt montert og jordet strømuttak.  
For å isolere skjermen fra strømkilden må du ta ut pluggen fra strømuttaket. Strømuttaket bør være lett tilgjengelig.

### **Varning - livsfara**

För att undvika risk för elektriska stötar måste du tänka på följande:  
Ta inte bort några skyddskåpor.  
Använd inte den här produkten innan du har satt fast stativet.  
Anslut inte produkten till ett eluttag under åskväder. Koppla inte heller ur produkten från ett eluttag under åskväder.  
Strömkabeln måste anslutas till ett felfritt och jordat uttag.  
All utrustning som den här produkten kopplas till måste också anslutas till felfria och jordade uttag.

För att bryta strömmen till bildskärmen måste du dra ut kontakten. Vagguttaget bör vara lätt att komma åt.

### **VAARA**

Sähköiskun vaaran välttämiseksi:

Älä avaa laitteen kansia missään tilanteessa.

Älä käytä laitetta, ellei jalustaa ole kiinnitetty.

Älä kytke laitetta pistorasiaan tai irrota sitä pistorasiasta ukonilman aikana.

Virtajohto on kytkettävä asianmukaisesti johdotettuun ja maadoitettuun pistorasiaan.

Kaikki muutkin laitteet, joihin tämä tuote on liitetty, on kytkettävä asianmukaisesti johdotettuihin pistorasioihin.

Kun haluat erottaa näyttimen sähköverkosta, sinun pitää irrottaa sen verkkojohto pistorasiasta. Pistorasian pitäisi olla mahdollisimman lähellä näytintä ja vaivattomasti käsillä.

### **ΚΙΝΔΥΝΟΣ**

Για να αποφύγετε τον κίνδυνο από χτυπήματα:

Μην αφαιρείτε τα καλύμματα.

Μη θέτετε το προϊόν αυτό σε λειτουργία εκτός εάν είναι τοποθετημένο στη βάση του.

Μη συνδέετε ή αποσυνδέετε το προϊόν αυτό κατά τη διάρκεια ηλεκτρικής καταιγίδας.

Ο ηλεκτροδέκτης του καλωδίου πρέπει να συνδέεται σε κανονικά καλωδιωμένο και γειωμένο ηλεκτροδότη.

Οποιαδήποτε συσκευή με την οποία θα συνδεθεί το προϊόν αυτό πρέπει επίσης να συνδέεται σε κανονικά καλωδιωμένους και γειωμένους ηλεκτροδότες.

Για να μονώσετε τον ενδείκτη από την ηλεκτρική παροχή, πρέπει να αφαιρέσετε τον ηλεκτροδέκτη από την έξοδο ηλεκτρικού ρεύματος. Η έξοδος ηλεκτρικού ρεύματος πρέπει να είναι εύκολα προσβάσιμη.

### **Tehlike !**

Þok tehlikesini önlemek için :

Kapakların yerini deđirtmeyin.

Eđer destek bađlý deđilse, bu üretimi çalıptırmayın.

Elektrik cereyaný açýk olduđu zaman bu üretimi bađlamayın veya kesmeyin.

Kablo fiþi elektrik þebekesi ile çok iyi bađlanmýþ olmalýdır ve tam tesisat borusuna bađlanmalýdır.

Hangi tesisat veya hangi üretim olursa olsun, tam elektrik þebekesine iyi bir şekilde bađlanmalýdır ve tam tesisat borusuna takýlmalýdır.

Elektrik cereyaný ekranýný tam izole etmek için, kablo fibini elektrik borusundan çýkarýnýz. Elektrik borusu giriþe kolaylýkla açýk olmalýdır.



安全にお使いいただくためには、以下について実行してください。

カバーを外さないこと。

スタンドを装着していない時は、本体を作動させないこと。

落雷の最中に本体を接続したり切断したりしないこと。

電気コードプラグを正確に接地されたプラグの差込口に挿入すること。

又、本体付属の部品についても、きちんと接地されたプラグの差込口に挿入すること。

電源からモニタを絶縁させたい場合には、プラグをコンセント差込口から抜いてください。

***IBM T86A***

LCD Color Monitor

User's Manual

## **First Edition (January 2000)**

This publication could contain technical inaccuracies or typographical errors. Known inaccuracies and errors may be corrected in later editions. IBM may make improvements and/or changes in the product(s) and/or program(s) at any time.

It is possible that this publication may contain reference to, or information about, IBM products (machines and programs), programming, or services that are not announced in your county.

Requests for copies of this publication and for technical information about IBM products should be made to your IBM Authorized Dealer or IBM Retailer.

No part of this publication may be reproduced or distributed in any form or by any means without prior permission in writing from the International Business Machines Corporation.

**© Copyright International Business Machines Corporation, 2000. All RIGHTS RESERVED.**



## **Notices:**

References in this publication to IBM products, programs, or services do not imply that IBM intends to make these available in countries in which IBM operates. Any reference to an IBM product, program or service is not intended to state or imply that only IBM's product, program, or service may be used. Any functionally equivalent product, program, or service that does not infringe IBM's intellectual property rights or other legally protectable rights may be used instead of the IBM product, program, or service. Evaluation and verification of operation in conjunction with other products, programs, or services, except those expressly designated by IBM, are the user's responsibility.

IBM may have patents or pending patent applications covering subject matter in this document. The furnishing of this document does not give you any license to these patents.

## **Trademarks**

The following terms, used in this publication, are trademarks or service marks of the IBM Corporation in the United States or other countries:

IBM

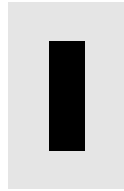
IBM HelpCenter

## TABLE OF CONTENTS

<b>Setup</b> .....	<b>1</b>
Unpacking.....	1
Hardware Requirements .....	1
Workplace Preparation.....	1
Working Practices.....	2
Adjusting the Monitor Position.....	3
Removing the Locking Pin and Lifting the Monitor.....	4
Removing the Stand from the monitor.....	5
Add Another Signal Cable .....	7
Caring for your Monitor.....	8
Maintenance .....	9
<b>Installing the Monitor</b> .....	<b>10</b>
Installing the Monitor .....	10
<b>Configuring Your Monitor</b> .....	<b>12</b>
Automatic Setup .....	12
SETUP Diskette for Windows 95 or Windows 98 or Windows 2000.....	12
Auto Setup for Windows 3.1, Windows 95, Windows 98 or Windows 2000 or Windows NT .....	13
<b>Adjusting the Monitor</b> .....	<b>15</b>
User Controls.....	15
CONTROLS LOCK / UNLOCK.....	16
On-screen display (OSD) controls.....	17
<b>Further Information</b> .....	<b>22</b>
Supported Timing Modes .....	22
Power Management .....	24
Product Disposal .....	24
<b>Troubleshooting</b> .....	<b>25</b>
<b>Specification</b> .....	<b>27</b>
<b>Warranty Statements</b> .....	<b>28</b>
<b>Compliance</b> .....	<b>43</b>
Statement .....	43
Power Cord.....	44

Industry Canada Compliance Statement .....	44
Déclaration de Conformité Industrielle du Canada .....	44
<b>TCO'95 applies to 9497-AG1 .....</b>	<b>45</b>
<b>TCO'99 applies to 9497-AW1 .....</b>	<b>45</b>
Hinweise .....	47

# Setup



## Unpacking

---

Check following items. If they are missing or damaged, consult your place of purchase immediately.

- ✓ LCD monitor
- ✓ DVI-Analogue signal cable
- ✓ Power Adapter
- ✓ Power Cord
- ✓ User Guide
- ✓ Installation Diskette

## Hardware Requirements

---

This monitor requires a computer with a suitable on-board sub-system or Video Adapter card that can support SXGA 1280x1024, XGA 1024x768, SVGA 800x600, or VGA 640x480 at 60Hz.

Note: Recommended operating mode is 1280 x 1024 @ 60 Hz.

## Workplace Preparation

---

### ✓ Height

The monitor should be positioned so that the top of the screen is slightly below your eye level when sitting at your workstation.

### ✓ Orientation

- Choose a position that gives the least reflection from lights and windows, usually at a right angle to any windows.

- The monitor should be positioned directly in front of you so that you do not have to twist your body to use it.
- Tilt the monitor to a comfortable viewing angle.

## **Working Practices**

---

### ✓ **Rest**

Take regular breaks. Vary your posture, stand up and stretch occasionally, as prolonged use of computer workstations can be tiring.

### ✓ **Back**

You should sit back in your chair and use the backrest.

### ✓ **Hands**

Use a light touch on the keyboard, keeping your hands and fingers relaxed. Allow a space in front of the keyboard to rest your wrists when not typing. Consider using a wrist pad.

### ✓ **Eyesight**

Working with monitors, in common with any prolonged close work, can be visually demanding. Look away from the screen periodically and have your eyesight checked regularly.

### ✓ **Screen settings**

Set the screen brightness and contrast to a comfortable level. You may have to adjust this as the lighting changes during the day. Many application programs let you select color combinations, which can help you to view in comfort. See the **Adjusting the Monitor** section for more information.

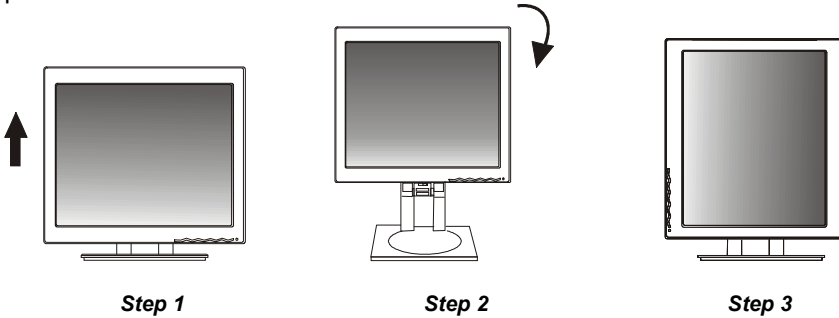
# Adjusting the Monitor Position

---

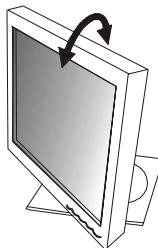
## ✓ Rotation

The monitor can be put in portrait or landscape mode as shown below.

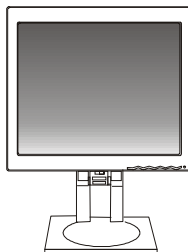
Note: The rotate mechanism will not operate when the monitor is in the lowest position.



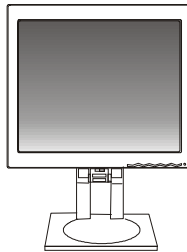
You can tilt the screen backward and forward –tilt 1-29 degrees as shown below.



You can adjust the screen height by a maximum of 130mm.



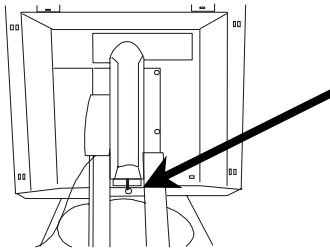
You can swivel the base around – swivel 300 degrees..



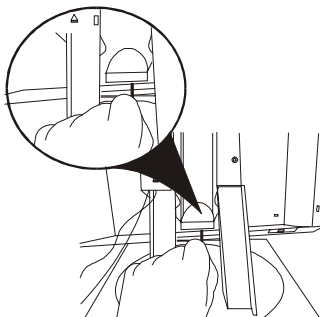
## **Removing the Locking Pin and Lifting the Monitor**

The monitor has a locking pin to stop the screen from moving in transit. Before the height adjustment can be used, you must remove the locking pin from the stand.

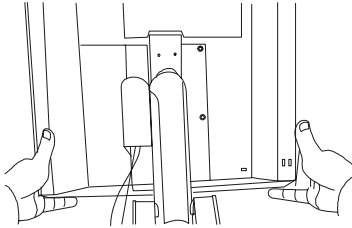
1. With the rear of the monitor facing you, locate the locking pin as show in diagram



2. Turn the locking pin a quarter of a turn and remove



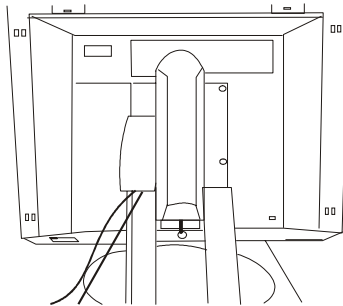
3. The monitor height can now be adjusted



## **Removing the Stand from the monitor**

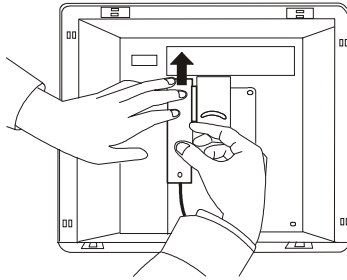
---

1. Lay the monitor face down on a flat surface  
(NOTE: It is important to place a soft cloth or other protective material beneath the monitor to avoid scratching the screen.)

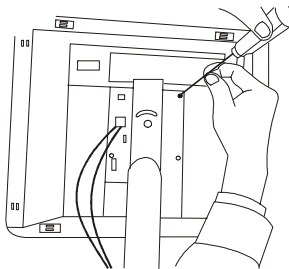




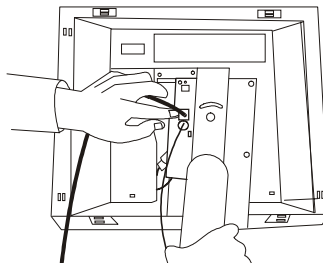
2. Push up the cable cover and remove it



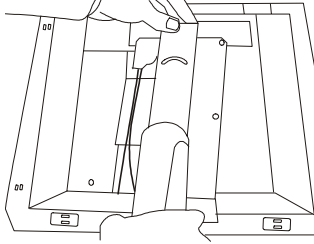
3. Remove the four mounting screws on the monitor.  
Caution: The stand is heavy and care should be taken to avoid dropping it.



4. Separate the cables from the Stand



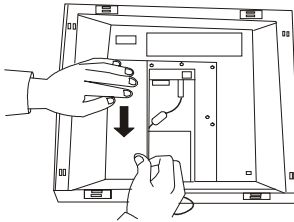
5. Remove the stand from the monitor



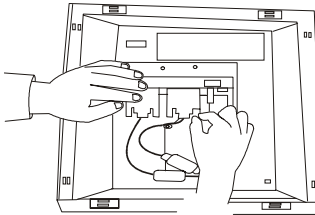
## **Add Another Signal Cable**

---

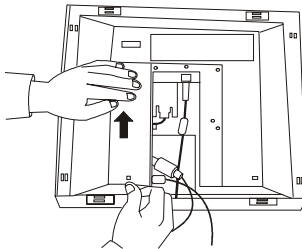
1. Remove the stand from the monitor as shown above.
2. Remove the plate.



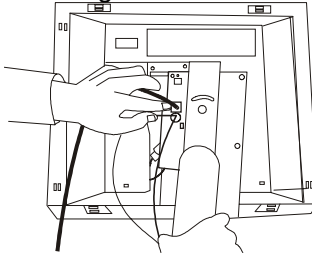
3. Attach the other cable.



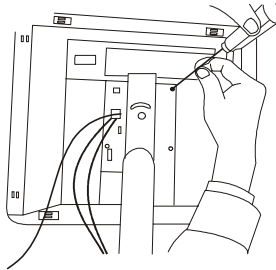
4. Attach the plate.



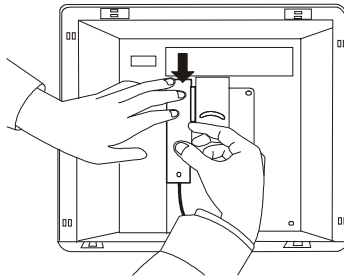
5. Insert the power cable and signal cables into the hole of the stand.



6. Attach the 4 screws.



7. Push down the cable cover and fasten it.



## **Caring for your Monitor**

---

Be sure to turn off the power before you perform any maintenance on the monitor. Clean your monitor as follows:

- Gently wipe the covers and the screen with a soft cloth.
- Remove finger marks and grease with a damp cloth and mild detergent; do not use solvents or abrasives.
- Never apply detergent or other liquid directly to the screen. Dampen the cloth and then wipe.
- Never use flammable cleaning material to clean your IBM monitor or any other electrical apparatus.

## **Maintenance**

---

1. Do not expose the monitor to direct sunlight or heat.
2. Do not spill liquid on the monitor.
3. Do not attempt to open the monitor. For service, see the Troubleshooting section.
4. Do not place anything on your monitor. Poor ventilation will elevate the temperature in the monitor.


# Installing the Monitor

# 2

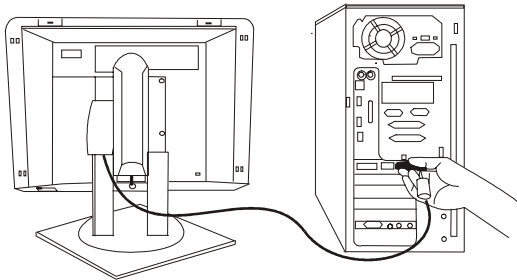
## Installing the Monitor

---

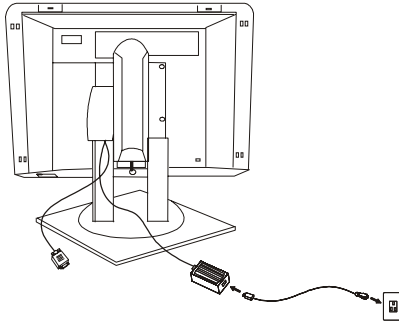
This monitor is equipped with an auto-sensing power supply for voltage range 100V ac to 240V ac at 50Hz or 60Hz.

 Be sure to read the “ Safety instructions” at the front of this User’s Guide before carrying out this procedure.

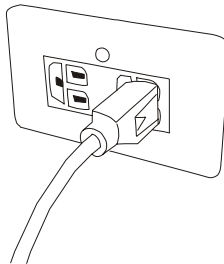
1. Make sure that the computer power is turned off.
2. Plug the video signal cable into the video signal connector of your computer.



3. Plug the power cord into the monitor.



4. Connect the other end of power cord to a properly grounded electrical outlet.



5. Switch on the computer and the monitor.

# Configuring Your Monitor

# 3

## **Automatic Setup**

---

When you first use your monitor you must perform Automatic Setup (AUTO SETUP). This procedure sets up your monitor to process the video signals from your computer without image discoloration or smearing. After you perform AUTO SETUP, the settings are stored and used each time you turn on the monitor.

The Setup Utility included on the setup diskette is for displaying a test pattern. It does not replace or modify the display driver. The Automatic Setup instructions require the monitor to be warmed up for 15 minutes. This is not required for normal operation.

## **SETUP Diskette for Windows 95 or Windows 98 or Windows 2000**

---

To use the Plug and Play feature in Windows 95 or Windows 98 or Windows 2000, files should be loaded from the IBM FLAT PANEL Monitor Installation diskette as follows:

1. Turn off the computer and all attached devices.
2. Ensure that the monitor is connected correctly.
3. Turn on the monitor and then the system unit. Allow the system to boot into Windows 95 or Windows 98 or Windows 2000.
4. Your computer's Plug and Play code may warn you that your system hardware has changed. This probably means that it has detected your new monitor for the first time.
5. Open the DISPLAY PROPERTIES windows by clicking on START, SETTINGS, CONTROL PANEL and then double clicking on the DISPLAY icon.
6. Select the SETTINGS tab.

7. Select the CHANGE DISPLAY TYPE button.
8. Select the CHANGE MONITOR TYPE button. Insert the Setup diskette into drive A: and select the HAVE DISK button.
9. Choose the 9497 monitor and select OK>, the files will be copied from the diskette to your hard drive.
10. Close all open windows and remove the diskette.
11. Reboot the system. The system will automatically select the maximum refresh rate and corresponding Color Matching Profile.

## **Auto Setup for Windows 3.1, Windows 95, Windows 98 or Windows 2000 or Windows NT**

---

1. Turn on the monitor first; then the computer.  
If the message NO SIGNAL is displayed, or if nothing is displayed check:  
The video interface cable is connected properly.  
The correct video adapter card is installed.  
Video card is set for a mode within the operating range of your new monitor.
2. Wait approximately 15 minutes, until the monitor warms up.
3. Insert the "Flat Panel Monitor Installation Diskette" into the diskette drive.
4. Check the operating system installed on your computer and follow the instructions from the table below.

When test pattern appears, press the OSD (On Screen Display) entry key (◀) and then use the left and right arrow key to highlight the image set-up icon (⏏). Press enter key to enter sub-menu and then press enter key again to activate the auto setup procedure. Image Setup will auto-adjust H-position, V-position, Pixel Clock and Phase.

Note : Direct access to the auto setup function is also provided by simultaneously pressing the left and right arrow keys.

5. When finished, the main OSD menu will be displayed.
6. Press any computer keyboard key to exit the test pattern.



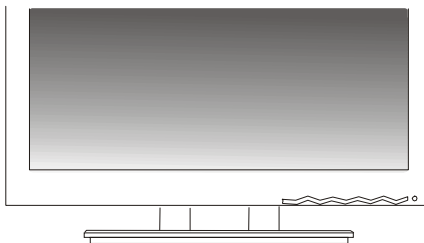
<b>Operating System</b>	<b>Step1</b>	<b>Step2</b>	<b>Step3</b>	<b>Step4</b>
Windows 3.1	Open PROGRAM MANGER	Select FILE	Select RUN	Type "A:\TESTPAT" and press ENTER
Windows NT 3.5				
Windows 95	Select START	Select RUN		
Windows 98				
Windows 2000				
Windows NT 4.0				

- You have completed the monitor setup for Windows operating system.






# Adjusting the Monitor

# 4

## User Controls



### User controls features

Icon	Direct Access Function	Function Using OSD Menu Controls
	Selects video input 1 or 2	<ol style="list-style-type: none"><li>1. Exits from menus, sub menus</li><li>2. Exits from OSD</li></ol>
	<ol style="list-style-type: none"><li>1. Brings up Brightness control OSD</li><li>2. Left and Right arrows pressed together bring up auto setup OSD</li></ol>	Moves the cursor to highlight icons or make adjustments
	<ol style="list-style-type: none"><li>1. Brings up Contrast control OSD</li><li>2. Left and Right arrows pressed together bring up auto setup OSD</li></ol>	Moves the cursor to highlight icons or make adjustments
	Control lock activated when pressed for 10 seconds Controls unlocked if held for 10 seconds.	<ol style="list-style-type: none"><li>1. Displays main OSD menu</li><li>2. Enters highlighted menus and submenus</li><li>3. Selects highlighted option</li></ol>
	Switches the monitor on or off	

*The image is already optimized for many display modes, however the user controls can be used to adjust the image to your liking.*

*The settings are saved after adjustment and when exiting the OSD, and will be effective thereafter.*

## **CONTROLS LOCK / UNLOCK**

---

This feature allows you to secure the current control settings, so that they cannot be inadvertently changed. Note: This does not include brightness and contrast.

Push and hold the enter button [↵] for 10 seconds; the message “Controls Locked” appears.

You can unlock the OSD controls at any time by pushing the enter button [↵] for 10 seconds; the message “Controls Unlocked” will appear.

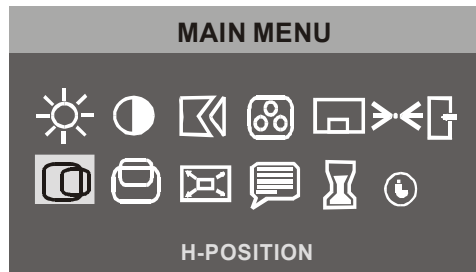
## On-screen display (OSD) controls

---

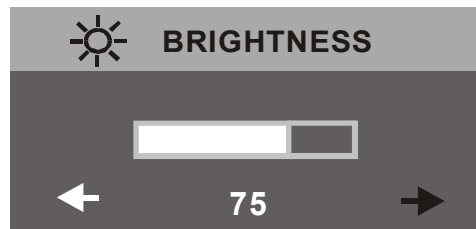
• The LCD monitor takes up to 15 minutes to become thermally stable after each time you switch it on. To make accurate adjustments, wait until the monitor has warmed up.


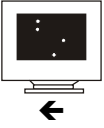
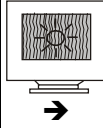

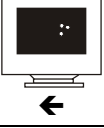
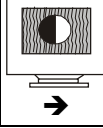

The settings which are adjustable with the user controls are accessed through the On-screen Display (OSD). Press the enter button [↵] to display the main OSD menu.




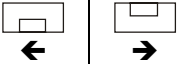

### Initial appearance of OSD main menu
















### sub menu



OSD Icon	Description	Sub-menu(s)	Control and Adjustment
 BRIGHTNESS	Adjusts Brightness		 
 CONTRAST	Adjusts Contrast		 
 IMAGE SET-UP	<p>The IMAGE SET-UP function is used to compensate for noise in the video signals, which causes horizontal lines or areas on the screen where the image appears to be unstable and jitters or shimmers. This can be done automatically or manually.</p>	Auto	<p>If AUTO is selected the image will be automatically adjusted.</p>
	<p>If manual is selected, the user will go to the manual adjustment screen.</p>	Manual <ul style="list-style-type: none"> <li>● Fine</li> <li>● Coarse</li> </ul>	<p>This allows you to remove any horizontal noise and clear or sharpen the appearance of characters. Fine adjustments should be made after making Coarse adjustments.</p>

OSD Icon	Description	sub-menu(s)	Control and Adjustment
 <b>COLOR</b>	Select the Preset Color Mode you find most comfortable. Use the User Color Mode menu, if necessary, to define your own color preference.	<b>COLOR MODE</b>	<b>Preset 1</b> (Warm White)  <b>Preset 2</b> (Normal White)  <b>Preset 3</b> (Cool white)
		<b>USER COLOR MODE</b> <ul style="list-style-type: none"> <li>● Red</li> <li>● Green</li> <li>● Blue</li> </ul>	Increases or decreases redness  Increases or decreases greenness  Increases or decreases blueness
 <b>OSD Position</b>	Changes the position of the OSD on the screen.	<b>H-POSITION</b>	
		<b>V-POSITION</b>	
 <b>RESET</b>	Reset returns all available functions (apart from language, which will not change unless adjusted via the LANGUAGE menu,) to their factory presets.	<ul style="list-style-type: none"> <li>● YES</li> <li>● NO</li> </ul>	

OSD Icon	Description	sub-menu(s)	Control and Adjustment	
 Input Selection	Selects video input 1 or video input 2		Input 1 	input 2 
 H-POSITION	Moves the displayed image left or right.			
 V-POSITION	Moves the displayed image up or down.			
 IMAGE SIZE	Displays the image in its original size or expanded size to fill the full screen of your monitor.	<b>NORMAL</b> -original image size. <b>EXPANDED</b> -image expanded to fill the screen.		
 Language	The language chosen affects only the language used for the OSD. It has no effect on any software running on the computer.	<ul style="list-style-type: none"> <li>● ENGLISH</li> <li>● FRANCAIS</li> <li>● DEUTSCH</li> <li>● ITALIANO</li> <li>● ESPANOL</li> <li>● JAPANESE</li> </ul>		
 OSD time	Selects the OSD display duration time. ( Between 5 and 60 seconds)	Adjust to your preference.		

 <p>Information</p>	<p>The model name, serial number, year of manufacture and current display mode are included in the information screen. Informs the user of the current display mode, and also shows the preset and user modes stored in the monitor. The current display mode is shown at the base of the preset mode and user mode displays. Use the left and right buttons to see the preset modes and user modes screens.</p>	<ul style="list-style-type: none"> <li>● PRESET</li> <li>● USER MODE</li> </ul>
--	--	---



# *Further Information*

# 5

## **Supported Timing Modes**

---

The Display mode the monitor uses is controlled by the computer. Therefore, you should refer to you computer documentation for details on how to change display modes.

For the display modes listed below, the screen image has been optimized during manufacture.

Input display mode					Multi-scan operation
Address ability	Horizontal Frequency (KHz)	Vertical Frequency (Hz)	Dot Clock Frequency (MHz)	Remark	Actual display resolution
*640x350	31.47(P)	70.08(N)	25.17	DOS	full screen 1280x1024
*720x400	31.47(N)	70.08(P)	28.32	DOS	
*640x480	31.47(N)	60.00(N)	25.18	DOS	
*640x480	35.00(N)	67.00(N)	30.24	Macintosh	
*640x480	37.86(N)	72.80(N)	31.5	VESA	
*640x480	37.50(N)	75.00(N)	31.5	VESA	
*800x600	37.88(P)	60.32(P)	40.00	VESA	
*800x600	48.08(P)	72.19(P)	50.00	VESA	
*800x600	46.86(P)	75.00(P)	49.50	VESA	
832x624	49.72(N)	74.55(N)	57.29	Macintosh	
*1024x768	48.36(N)	60.00(N)	65.00	VESA	
1024x768	56.48(N)	70.10(N)	75.00	VESA	
*1024x768	60.02(P)	75.00(P)	78.75	VESA	
1024x768	60.24(N)	74.93(N)	80.00	Macintosh	
1152x864	67.50(P)	75.00(P)	108.00	VESA	
1152x870	68.68(N)	75.06(N)	100.00		
1152x900	61.84(P)	66.00(P)	94.50		
*1280x1024	64.00(P)	60.00(P)	108.00	VESA	
*1280x1024	75.83(N)	71.53(N)	128.00		
*1280x1024	80.00(P)	75.00(P)	135.00	VESA	
1280x1024	81.18(N)	76.16(N)	135.09		

Notes (1) The timing with “\*” symbol are adjusted in the factory.  
(2) (P), (N) stands for “Positive”, “Negative” polarity of incoming timing.

## Power Management

---

To benefit from power management, the monitor must be used in conjunction with a computer that implements the Video Electronics Standards Association (VESA) Display Power Management Signaling (DPMS) Standard.

The power management feature is invoked when the computer recognizes that you have not used your mouse or keyboard for a user-definable period. There are several states as described in the table below.

IBM recommends that you switch off your monitor at the end of each working day, or whenever you expect to leave it unused for long periods during the day.

State	Power Indicator	Screen	Restoring Operation
On	Steady green	Normal	
DPMS Standby	Steady amber	Blank	Press a key or move the mouse.
DPMS Suspend	Flashing amber	Blank	Press a key or move the mouse.
DPMS Off	Flashing amber	Blank	Press a key or move the mouse.

Your flat panel monitor consumes less than 3W when in the DPMS “standby”, “suspend” or “off” state.

## Product Disposal

---

The fluorescent lamp in the liquid crystal display contains mercury. Dispose of it as required by local ordinances and regulations.

# Troubleshooting



If you encounter trouble with this product, first check that the monitor is properly installed.

## **Can't find the 9497 Monitor on the Windows 95® or Windows 98® or Windows 2000® monitor lists.**

You need to update the Windows 95® or Windows 98® or Windows 2000® setup information for your 9497 Monitor.

## **There is no picture on the screen.**

Check:

Power saving mode. Press any key or move the mouse to deactivate the mode.

Signal cable connector pins. If there are bent or missing pins, consult your place of purchase.

That the video mode selected is within the operating range of the monitor. If the power indicator on the monitor bezel is green and flashing then the monitor has detected signals that are outside its operating range.

## **The picture is unstable.**

Check:

Signal cable connector pins. If there are bent or missing pins, consult your place of purchase.

Graphics card. Ensure a valid mode is selected.

## **Characters look too dark or too light.**

Adjust Contrast or Brightness

## **The image has a few tiny dots that are not the same color as the surrounding area.**

The Liquid Crystal Display (LCD) contains about 3 million Thin Film Transistors (TFTs). A small number of missing, discolored, or lighted dots may be present on the screen. This is an intrinsic characteristic of TFT LCD technology and is not an LCD defect.

### **Need More Help?**

If your problems remain after checking this manual, please contact your reseller or call your IBM Help Center.

In the US call 1-800-772-2227

In Canada call 1-800-565-3344

# Specification **7**

<b>LCD Panel 18.1", TFT</b>		
<b>Dimensions (W x H x D)</b>	Width Depth Height	418mm (W) 260mm (H) 400-530mm (D)
<b>Weight (net)</b>		10.5 Kg
<b>Stand Range</b>	Vertical (Tilt) Vertical (Lift) Swivel Rotate	Range: 1-29 degrees Range: 130mm Range: 300 degrees Range: 90 degrees
<b>Power Supply (Universal)</b>	Input voltage Power consumption	100 ~ 240VAC at 50 ~ 60Hz 65W max.
<b>Max. Addressability</b>		1280 x 1024 (SXGA)
<b>Video Input</b>		RGB input
<b>User controls</b>		Power ON/OFF, OSD
<b>Regulatory Compliance</b>		UL, CSA, FCC, TÜV/GS, VCCI, CE, D.N.S.F., SASO, CCIB/CCE, TÜV/Ergo, SISIR, MEEI, PCBC, EZU, SIQ, NOM, GOST, C-Tick, BCIQ, TCO95 (9497-AG1), TCO99 (9497-AW1), MPRIII, NUTEK, SQT SB
<b>Display Area</b>		359mm(H) x 287.2mm(V)
<b>Ambient Temperature</b>	Operating Shipping Storage	+ 5°C ~ +35°C -20°C ~ +60°C -20°C ~ +60°C
<b>Humidity</b>	Operating Shipping Storage	10% ~ 80% 5% ~ 95% 5% ~ 95%

# Warranty Statements

# 8

The warranty statements consist of two parts: Part 1 varies by country. Part 2 is the same for both statements. Be sure to read both the Part 1 that applies to your country and Part 2.

- **Worldwide except Canada, Puerto Rico, Turkey and United States (Z125-5697-01 11/97)**  
(Part 1 - General Terms)
- **Worldwide Country-Unique Terms**  
(Part 2 – Country Unique Terms)
- **United States, Puerto Rico, and Canada (Z125-4753-05 11/97)**  
(Part 1 - General Terms)

Translations of IBM's warranty statements also can be found on the Installation Diskette. Your Installation Diskette includes translations of IBM's Statement of Warranty in the following languages:

<b>Worldwide Statement of Warranty (Except Turkey, U.S. ,Puerto Rico and Canada):</b>	
Arabic	Z1255697-ara.htm
Brazilian Portuguese	Z1255697-bra.htm
Bulgarian	Z1255697-bul.htm
Chinese	Z1255697-chi.htm
Croatian	Z1255697-cor.htm
Czech	Z1255697-cze.htm
Danish	Z1255697-dan.htm
Dutch	Z1255697-dut.htm
English	Z1255697-eng.htm
Finnish	Z1255697-fin.htm
French	Z1255697-fre.htm
German	Z1255697-ger.htm
Greek	Z1255697-gre.htm
Hebrew	Z1255697-heb.htm
Hungarian	Z1255697-hun.htm
Italian	Z1255697-ita.htm

Japanese	Z1255697-jap.htm
Korean	Z1255697-kor.htm
Norwegian	Z1255697-nor.htm
Polish	Z1255697-pol.htm
Portuguese	Z1255697-por.htm
Russian	Z1255697-rus.htm
Slovakian	Z1255697-sla.htm
Slovenian	Z1255697-sle.htm
Spanish	Z1255697-spa.htm
Swedish	Z1255697-swe.htm
Taiwanese	Z1255697-tai.htm
<b>Turkey Statement of Warranty</b>	
Turkish	Z1255698-tur.htm
English	Z1255698-eng.htm
<b>United States, Puerto Rico and Canada Statement of Limited Warranty</b>	
English	Z1254753-eng.htm
French Canadian	Z1254753-fca.htm

**IBM Statement of Warranty World-wide except Canada, Puerto Rico, Turkey, United States (Part 1 - General Terms)**

*This Statement of Warranty includes Part 1 - General Terms and Part 2 - Country-unique Terms. **The terms of Part 2 may replace or modify those of Part 1.** The warranties provided by IBM in this Statement of Warranty apply only to Machines you purchase for your use, and not for resale, from IBM or your reseller. The term "Machine" means an IBM machine, its features, conversions, upgrades, elements, or accessories, or any combination of them. The term "Machine" does not include any software programs, whether pre-loaded with the Machine, installed subsequently or otherwise. Unless IBM specifies otherwise, the following warranties apply only in the country where you acquire the Machine. Nothing in this Statement of Warranty affects any statutory rights of consumers that cannot be waived or limited by contract. If you have any questions, contact IBM or your reseller.*

**Machine** - 9497

**Warranty Period\*** - Three (3) years

\*Contact your place of purchase for warranty service information. Some IBM Machines are eligible for On-site warranty service depending on the country where service is performed.



## **The IBM Warranty for Machines**

IBM warrants that each Machine 1) is free from defects in materials and workmanship and 2) conforms to IBM's Official Published Specifications. The warranty period for a Machine is a specified, fixed period commencing on its Date of Installation. The date on your sales receipt is the Date of Installation, unless IBM or your reseller informs you otherwise.

During the warranty period IBM or your reseller, if approved by IBM to provide warranty service, will provide repair and exchange service for the Machine, without charge, under the type of service designated for the Machine and will manage and install engineering changes that apply to the Machine.

If a Machine does not function as warranted during the warranty period, and IBM or your reseller are unable to either 1) make it do so or 2) replace it with one that is at least functionally equivalent, you may return it to your place of purchase and your money will be refunded. The replacement may not be new, but will be in good working order.

## **Extent of Warranty**

The warranty does not cover the repair or exchange of a Machine resulting from misuse, accident, modification, unsuitable physical or operating environment, improper maintenance by you, or failure caused by a product for which IBM is not responsible. The warranty is voided by removal or alteration of Machine or parts identification labels.

**THESE WARRANTIES ARE YOUR EXCLUSIVE WARRANTIES AND REPLACE ALL OTHER WARRANTIES OR CONDITIONS, EXPRESS OR IMPLIED, INCLUDING, BUT NOT LIMITED TO, THE IMPLIED WARRANTIES OR CONDITIONS OF MERCHANTABILITY AND FITNESS FOR A PARTICULAR PURPOSE. THESE WARRANTIES GIVE YOU SPECIFIC LEGAL RIGHTS AND YOU MAY ALSO HAVE OTHER RIGHTS WHICH VARY FROM JURISDICTION TO JURISDICTION. SOME JURISDICTIONS DO NOT ALLOW THE EXCLUSION OR LIMITATION OF EXPRESS OR IMPLIED WARRANTIES, SO THE ABOVE EXCLUSION OR LIMITATION MAY NOT APPLY TO YOU. IN THAT EVENT, SUCH WARRANTIES ARE LIMITED IN DURATION TO THE WARRANTY PERIOD. NO WARRANTIES APPLY AFTER THAT PERIOD.**

## **Items Not Covered by Warranty**

IBM does not warrant uninterrupted or error-free operation of a Machine.

Unless specified otherwise, IBM provides non-IBM machines **WITHOUT WARRANTIES OF ANY KIND.**

Any technical or other support provided for a Machine under warranty, such as assistance via telephone with "how-to" questions and those regarding Machine set-up and installation will be provided **WITHOUT WARRANTIES OF ANY KIND.**

### **Warranty Service**

To obtain warranty service for the Machine, contact your reseller or IBM. You may be required to present proof of purchase.

IBM or your reseller provides certain types of repair and exchange service, either at your location or at a service center, to keep Machines in, or restore them to, conformance with their Specifications. IBM or your reseller will inform you of the available types of service for a Machine based on its country of installation. IBM may repair the failing Machine or exchange it at its discretion.

When warranty service involves the exchange of a Machine or part, the item IBM or your reseller replaces becomes its property and the replacement becomes yours. You represent that all removed items are genuine and unaltered. The replacement may not be new, but will be in good working order and at least functionally equivalent to the item replaced. The replacement assumes the warranty service status of the replaced item.

Any feature, conversion, or upgrade IBM or your reseller services must be installed on a Machine which is 1) for certain Machines, the designated, serial-numbered Machine and 2) at an engineering-change level compatible with the feature, conversion, or upgrade. Many features, conversions, or upgrades involve the removal of parts and their return to IBM. A part that replaces a removed part will assume the warranty service status of the removed part.

Before IBM or your reseller exchanges a Machine or part, you agree to remove all features, parts, options, alterations, and attachments not under warranty service.

You also agree to ensure that the Machine is free of any legal obligations or restrictions that prevent its exchange; obtain authorization from the owner to have IBM or your reseller service a Machine that you do not own; and where applicable, before service is provided follow the problem determination, problem analysis, and service request procedures that IBM or your reseller

provides, secure all programs, data, and funds contained in a Machine, provide IBM or your reseller with sufficient, free, and safe access to your facilities to permit them to fulfill their obligations, and inform IBM or your reseller of changes in a Machine's location.

IBM is responsible for loss of, or damage to, your Machine while it is 1) in IBM's possession or 2) in transit in those cases where IBM is responsible for the transportation charges.

Neither IBM nor your reseller is responsible for any of your confidential, proprietary or personal information contained in a Machine which you return to IBM or your reseller for any reason. You should remove all such information from the Machine prior to its return.

### **Production Status**

Each IBM Machine is manufactured from new parts, or new and used parts. In some cases, the Machine may not be new and may have been previously installed. Regardless of the Machine's production status, IBM's appropriate warranty terms apply.

### **Limitation of Liability**

Circumstances may arise where, because of default on IBM's part or other liability, you are entitled to recover damages from IBM. In each such instance, regardless of the basis on which you are entitled to claim damages from IBM (including fundamental breach, negligence, misrepresentation, or other contract or tort claim), IBM is liable for no more than damages for bodily injury (including death) and damage to real property and tangible personal property; and

The amount of any other actual direct damages, up to the greater of U.S. \$100,000 (or equivalent in local currency) or the charges (if recurring, 12 months' charges apply) for the Machine that is the subject of the claim.

This limit also applies to IBM's suppliers and your reseller. It is the maximum for which IBM, its suppliers, and your reseller are collectively responsible.

**UNDER NO CIRCUMSTANCES IS IBM LIABLE FOR ANY OF THE FOLLOWING: 1) THIRD-PARTY CLAIMS AGAINST YOU FOR DAMAGES (OTHER THAN THOSE UNDER THE FIRST ITEM LISTED ABOVE); 2) LOSS OF, OR DAMAGE TO, YOUR RECORDS OR DATA; OR 3) SPECIAL, INCIDENTAL, OR INDIRECT DAMAGES OR FOR ANY ECONOMIC CONSEQUENTIAL DAMAGES (INCLUDING LOST PROFITS OR SAVINGS), EVEN IF IBM, ITS SUPPLIERS OR YOUR RESELLER IS**

**INFORMED OF THEIR POSSIBILITY. SOME JURISDICTIONS DO NOT ALLOW THE EXCLUSION OR LIMITATION OF INCIDENTAL OR CONSEQUENTIAL DAMAGES, SO THE ABOVE LIMITATION OR EXCLUSION MAY NOT APPLY TO YOU.**

## **Statement of Warranty Part 2 - Country-unique Terms**

### **ASIA PACIFIC**

**AUSTRALIA: The IBM Warranty for Machines:** The following paragraph is added to this Section:

The warranties specified in this Section are in addition to any rights you may have under the Trade Practices Act 1974 or other legislation and are only limited to the extent permitted by the applicable legislation.

**Extent of Warranty:** The following replaces the first and second sentences of this Section:

The warranty does not cover the repair or exchange of a Machine resulting from misuse, accident, modification, unsuitable physical or operating environment, operation in other than the Specified Operating Environment, improper maintenance by you, or failure caused by a product for which IBM is not responsible.

**Limitation of Liability:** The following is added to this Section:

Where IBM is in breach of a condition or warranty implied by the Trade Practices Act 1974, IBM's liability is limited to the repair or replacement of the goods or the supply of equivalent goods. Where that condition or warranty relates to right to sell, quiet possession or clear title, or the goods are of a kind ordinarily acquired for personal, domestic or household use or consumption, then none of the limitations in this paragraph apply.

**PEOPLE'S REPUBLIC OF CHINA: Governing Law:** The following is added to this Statement:

The laws of the State of New York govern this Statement.

**INDIA: Limitation of Liability:** The following replaces items 1 and 2 of this Section:

1. liability for bodily injury (including death) or damage to real property and tangible personal property will be limited to that caused by IBM's negligence;
2. as to any other actual damage arising in any situation involving nonperformance by IBM pursuant to, or in any way related to the subject of this Statement of Warranty, IBM's liability will be limited to the charge paid by

you for the individual Machine that is the subject of the claim.

**NEW ZEALAND: The IBM Warranty for Machines:** The following paragraph is added to this Section:

The warranties specified in this Section are in addition to any rights you may have under the Consumer Guarantees Act 1993 or other legislation which cannot be excluded or limited. The Consumer Guarantees Act 1993 will not apply in respect of any goods which IBM provides, if you require the goods for the purposes of a business as defined in that Act.

**Limitation of Liability:** The following is added to this Section:

Where Machines are not acquired for the purposes of a business as defined in the Consumer Guarantees Act 1993, the limitations in this Section are subject to the limitations in that Act.

### **EUROPE, MIDDLE EAST, AFRICA (EMEA)**

**The following terms apply to all EMEA countries.**

The terms of this Statement of Warranty apply to Machines purchased from an IBM reseller. If you purchased this Machine from IBM, the terms and conditions of the applicable IBM agreement prevail over this warranty statement.

#### **Warranty Service**

If you purchased an IBM Machine in Austria, Belgium, Denmark, Estonia, Finland, France, Germany, Greece, Iceland, Ireland, Italy, Latvia, Lithuania, Luxembourg, Netherlands, Norway, Portugal, Spain, Sweden, Switzerland or United Kingdom, you may obtain warranty service for that Machine in any of those countries from either (1) an IBM reseller approved to perform warranty service or (2) from IBM.

If you purchased an IBM Personal Computer Machine in Albania, Armenia, Belarus, Bosnia and Herzegovina, Bulgaria, Croatia, Czech Republic, Georgia, Hungary, Kazakhstan, Kirghizia, Federal Republic of Yugoslavia, Former Yugoslav Republic of Macedonia (FYROM), Moldova, Poland, Romania, Russia, Slovak Republic, Slovenia, or Ukraine, you may obtain warranty service for that Machine in any of those countries from either (1) an IBM reseller approved to perform warranty service or (2) from IBM.

The applicable laws, Country-unique terms and competent court for this Statement are those of the country in which the warranty service is being provided. However, the laws of Austria govern this Statement if the warranty

service is provided in Albania, Armenia, Belarus, Bosnia and Herzegovina, Bulgaria, Croatia, Czech Republic, Federal Republic of Yugoslavia, Georgia, Hungary, Kazakhstan, Kirghizia, Former Yugoslav Republic of Macedonia (FYROM), Moldova, Poland, Romania, Russia, Slovak Republic, Slovenia, and Ukraine.

**The following terms apply to the country specified:**

**EGYPT: Limitation of Liability:** The following replaces item 2 in this Section: 2. as to any other actual direct damages, IBM's liability will be limited to the total amount you paid for the Machine that is the subject of the claim.

Applicability of suppliers and resellers (unchanged).

**FRANCE: Limitation of Liability:** The following replaces the second sentence of the first paragraph of this Section:  
In such instances, regardless of the basis on which you are entitled to claim damages from IBM, IBM is liable for no more than: (items 1 and 2 unchanged).

**GERMANY: The IBM Warranty for Machines:** The following replaces the first sentence of the first paragraph of this Section:  
The warranty for an IBM Machine covers the functionality of the Machine for its normal use and the Machine's conformity to its Specifications.

The following paragraphs are added to this Section:  
The minimum warranty period for Machines is six months.

In case IBM or your reseller are unable to repair an IBM Machine, you can alternatively ask for a partial refund as far as justified by the reduced value of the unrepaired Machine or ask for a cancellation of the respective agreement for such Machine and get your money refunded.

**Extent of Warranty:** The second paragraph does not apply.

**Warranty Service:** The following is added to this Section:  
During the warranty period, transportation for delivery of the failing Machine to IBM will be at IBM's expense.

**Production Status:** The following paragraph replaces this Section:  
Each Machine is newly manufactured. It may incorporate in addition to new parts, re-used parts as well.

**Limitation of Liability:** The following is added to this Section:

The limitations and exclusions specified in the Statement of Warranty will not apply to damages caused by IBM with fraud or gross negligence and for express warranty.

In item 2, replace "U.S. \$100,000" with "1.000.000 DEM."

The following sentence is added to the end of the first paragraph of item 2: IBM's liability under this item is limited to the violation of essential contractual terms in cases of ordinary negligence.

**IRELAND: Extent of Warranty:** The following is added to this Section:

Except as expressly provided in these terms and conditions, all statutory conditions, including all warranties implied, but without prejudice to the generality of the foregoing all warranties implied by the Sale of Goods Act 1893 or the Sale of Goods and Supply of Services Act 1980 are hereby excluded.

**Limitation of Liability:** The following replaces items one and two of the first paragraph of this Section:

1. death or personal injury or physical damage to your real property solely caused by IBM's negligence; and 2. the amount of any other actual direct damages, up to the greater of Irish Pounds 75,000 or 125 percent of the charges (if recurring, the 12 months' charges apply) for the Machine that is the subject of the claim or which otherwise gives rise to the claim.

Applicability of suppliers and resellers (unchanged).

The following paragraph is added at the end of this Section:

IBM's entire liability and your sole remedy, whether in contract or in tort, in respect of any default shall be limited to damages.

**ITALY: Limitation of Liability:** The following replaces the second sentence in the first paragraph:

In each such instance unless otherwise provided by mandatory law, IBM is liable for no more than: (item 1 unchanged) 2) as to any other actual damage arising in all situations involving non-performance by IBM pursuant to, or in any way related to the subject matter of this Statement of Warranty, IBM's liability, will be limited to the total amount you paid for the Machine that is the subject of the claim.

Applicability of suppliers and resellers (unchanged).

The following replaces the second paragraph of this Section:

Unless otherwise provided by mandatory law, IBM and your reseller are not liable for any of the following: (items 1 and 2 unchanged) 3) indirect damages, even if IBM or your reseller is informed of their possibility.

**SOUTH AFRICA, NAMIBIA, BOTSWANA, LESOTHO AND SWAZILAND:**

**Limitation of Liability:** The following is added to this Section:

IBM's entire liability to you for actual damages arising in all situations involving nonperformance by IBM in respect of the subject matter of this Statement of Warranty will be limited to the charge paid by you for the individual Machine that is the subject of your claim from IBM.

**TURKIYE: Production Status:** The following replaces this Section:

IBM fulfills customer orders for IBM Machines as newly manufactured in accordance with IBM's production standards.

**UNITED KINGDOM: Limitation of Liability:** The following replaces items 1 and 2 of the first paragraph of this Section:

1. death or personal injury or physical damage to your real property solely caused by IBM's negligence;
2. the amount of any other actual direct damages or loss, up to the greater of Pounds Sterling 150,000 or 125 percent of the charges (if recurring, the 12 months' charges apply) for the Machine that is the subject of the claim or which otherwise gives rise to the claim.

The following item is added to this paragraph:

3. breach of IBM's obligations implied by Section 12 of the Sale of Goods Act 1979 or Section 2 of the Supply of Goods and Services Act 1982.

Applicability of suppliers and resellers (unchanged).

The following is added to the end of this Section:

IBM's entire liability and your sole remedy, whether in contract or in tort, in respect of any default will be limited to damages.



## **NORTH AMERICA**

**CANADA: Warranty Service:** The following is added to this Section:  
To obtain warranty service from IBM, call **1-800-565-3344**.

**UNITED STATES OF AMERICA: Warranty Service:** The following is added to this Section:  
To obtain warranty service from IBM, call **1-800-772-2227**.

### **IBM Statement of Limited Warranty for United States, Puerto Rico, and Canada (Part 1 - General Terms)**

*This Statement of Limited Warranty includes Part 1 - General Terms and Part 2 - Country-unique Terms. **The terms of Part 2 may replace or modify those of Part 1.** The warranties provided by IBM in this Statement of Limited Warranty apply only to Machines you purchase for your use, and not for resale, from IBM or your reseller. The term "Machine" means an IBM machine, its features, conversions, upgrades, elements, or accessories, or any combination of them. The term "Machine" does not include any software programs, whether pre-loaded with the Machine, installed subsequently or otherwise. Unless IBM specifies otherwise, the following warranties apply only in the country where you acquire the Machine. Nothing in this Statement of Warranty affects any statutory rights of consumers that cannot be waived or limited by contract. If you have any questions, contact IBM or your reseller.*

**Machine** - 9497

**Warranty Period\*** - Three (3) years

\*Contact your place of purchase for warranty service information. Some IBM Machines are eligible for On-site warranty service depending on the country where service is performed.

### **The IBM Warranty for Machines**

IBM warrants that each Machine 1) is free from defects in materials and workmanship and 2) conforms to IBM's Official Published Specifications. The warranty period for a Machine is a specified, fixed period commencing on its Date of Installation. The date on your sales receipt is the Date of Installation, unless IBM or your reseller informs you otherwise.

During the warranty period IBM or your reseller, if approved by IBM to provide warranty service, will provide repair and exchange service for the Machine, without charge, under the type of service designated for the Machine and will manage and install engineering changes that apply to the Machine.

If a Machine does not function as warranted during the warranty period, and IBM or your reseller are unable to either 1) make it do so or 2) replace it with one that is at least functionally equivalent, you may return it to your place of purchase and your money will be refunded. The replacement may not be new, but will be in good working order.

### **Extent of Warranty**

The warranty does not cover the repair or exchange of a Machine resulting from misuse, accident, modification, unsuitable physical or operating environment, improper maintenance by you, or failure caused by a product for which IBM is not responsible. The warranty is voided by removal or alteration of Machine or parts identification labels.

**THESE WARRANTIES ARE YOUR EXCLUSIVE WARRANTIES AND REPLACE ALL OTHER WARRANTIES OR CONDITIONS, EXPRESS OR IMPLIED, INCLUDING, BUT NOT LIMITED TO, THE IMPLIED WARRANTIES OR CONDITIONS OF MERCHANTABILITY AND FITNESS FOR A PARTICULAR PURPOSE. THESE WARRANTIES GIVE YOU SPECIFIC LEGAL RIGHTS AND YOU MAY ALSO HAVE OTHER RIGHTS WHICH VARY FROM JURISDICTION TO JURISDICTION. SOME JURISDICTIONS DO NOT ALLOW THE EXCLUSION OR LIMITATION OF EXPRESS OR IMPLIED WARRANTIES, SO THE ABOVE EXCLUSION OR LIMITATION MAY NOT APPLY TO YOU. IN THAT EVENT, SUCH WARRANTIES ARE LIMITED IN DURATION TO THE WARRANTY PERIOD. NO WARRANTIES APPLY AFTER THAT PERIOD.**

### **Items Not Covered by Warranty**

IBM does not warrant uninterrupted or error-free operation of a Machine.

Unless specified otherwise, IBM provides non-IBM machines **WITHOUT WARRANTIES OF ANY KIND.**

Any technical or other support provided for a Machine under warranty, such as assistance via telephone with "how-to" questions and those regarding Machine set-up and installation, will be provided **WITHOUT WARRANTIES OF ANY KIND.**

## **Warranty Service**

To obtain warranty service for the Machine, contact your reseller or IBM. In the United States, call IBM at 1-800-772-2227. In Canada, call IBM at 1-800-565-3344. You may be required to present proof of purchase.

IBM or your reseller provides certain types of repair and exchange service, either at your location or at a service center, to keep Machines in, or restore them to, conformance with their Specifications. IBM or your reseller will inform you of the available types of service for a Machine based on its country of installation. IBM may repair the failing Machine or exchange it at its discretion.

When warranty service involves the exchange of a Machine or part, the item IBM or your reseller replaces becomes its property and the replacement becomes yours. You represent that all removed items are genuine and unaltered. The replacement may not be new, but will be in good working order and at least functionally equivalent to the item replaced. The replacement assumes the warranty service status of the replaced item.

Any feature, conversion, or upgrade IBM or your reseller services must be installed on a Machine which is 1) for certain Machines, the designated, serial-numbered Machine and 2) at an engineering-change level compatible with the feature, conversion, or upgrade. Many features, conversions, or upgrades involve the removal of parts and their return to IBM. A part that replaces a removed part will assume the warranty service status of the removed part.

Before IBM or your reseller exchanges a Machine or part, you agree to remove all features, parts, options, alterations, and attachments not under warranty service.

You also agree to

1. ensure that the Machine is free of any legal obligations or restrictions that prevent its exchange;
2. obtain authorization from the owner to have IBM or your reseller service a Machine that you do not own; and
3. where applicable, before service is provided
  - a. follow the problem determination, problem analysis, and service request procedures that IBM or your reseller provides,
  - b. secure all programs, data, and funds contained in a Machine,
  - c. provide IBM or your reseller with sufficient, free, and safe access to your

facilities to permit them to fulfill their obligations, and  
d. inform IBM or your reseller of changes in a Machine's location.

IBM is responsible for loss of, or damage to, your Machine while it is 1) in IBM's possession or 2) in transit in those cases where IBM is responsible for the transportation charges.

Neither IBM nor your reseller is responsible for any of your confidential, proprietary or personal information contained in a Machine which you return to IBM or your reseller for any reason. You should remove all such information from the Machine prior to its return.

### **Production Status**

Each IBM Machine is manufactured from new parts, or new and used parts. In some cases, the Machine may not be new and may have been previously installed. Regardless of the Machine's production status, IBM's appropriate warranty terms apply.

### **Limitation of Liability**

Circumstances may arise where, because of a default on IBM's part or other liability, you are entitled to recover damages from IBM. In each such instance, regardless of the basis on which you are entitled to claim damages from IBM (including fundamental breach, negligence, misrepresentation, or other contract or tort claim), IBM is liable for no more than

damages for bodily injury (including death) and damage to real property and tangible personal property; and

the amount of any other actual direct damages, up to the greater of U.S. \$100,000 (or equivalent in local currency) or the charges (if recurring, 12 months' charges apply) for the Machine that is the subject of the claim. This limit also applies to IBM's suppliers and your reseller. It is the maximum for which IBM, its suppliers, and your reseller are collectively responsible.

**UNDER NO CIRCUMSTANCES IS IBM LIABLE FOR ANY OF THE FOLLOWING: 1) THIRD-PARTY CLAIMS AGAINST YOU FOR DAMAGES (OTHER THAN THOSE UNDER THE FIRST ITEM LISTED ABOVE); 2) LOSS OF, OR DAMAGE TO, YOUR RECORDS OR DATA; OR 3) SPECIAL, INCIDENTAL, OR INDIRECT DAMAGES OR FOR ANY ECONOMIC CONSEQUENTIAL DAMAGES (INCLUDING LOST PROFITS OR SAVINGS), EVEN IF IBM, ITS SUPPLIERS OR YOUR RESELLER IS**

**INFORMED OF THEIR POSSIBILITY. SOME JURISDICTIONS DO NOT ALLOW THE EXCLUSION OR LIMITATION OF INCIDENTAL OR CONSEQUENTIAL DAMAGES, SO THE ABOVE LIMITATION OR EXCLUSION MAY NOT APPLY TO YOU.**

# Compliance



## Federal Communications Commission (FCC)

### Statement

---

This equipment has been tested and found to comply with the limits for a Class B digital device, pursuant to Part 15 of the FCC Rules. These limits are designed to provide reasonable protection against harmful interference in a residential installation. This equipment generates, uses, and can radiate radio frequency energy and, if not installed and used in accordance with the instructions, may cause harmful interference to radio communications. However, there is no guarantee that interference will not occur in a particular installation.

If this equipment does cause harmful interference to radio or television reception, which can be determined by turning the equipment off and on, the user is encouraged to try to correct the interference by one or more of the following measures:

- Reorient or relocate the receiving antenna.
- Increase the separation between the equipment and receiver.
- Connect the equipment into an outlet on a circuit different from that to which the receiver is connected.
- Consult an IBM authorized dealer or service representative for help.

Properly shielded and grounded cables and connectors must be used in order to meet FCC emission limits. Proper cables and connectors are available from IBM authorized dealers. IBM is not responsible for any radio or television interference caused by using other than recommended cables and connectors or by unauthorized changes or modifications to this equipment. Unauthorized changes or modifications could void the user's authority to operate the equipment.

This device complies with Part 15 of the FCC Rules.

Operation is subject to the following two conditions: (1) this device may not cause harmful interference, and (2) this device must accept any interference

received, including interference that may cause undesired operation. This Class B digital apparatus meets all requirements of the Canadian Interference-Causing Equipment Regulations.

## **Power Cord**

---

For your safety, IBM provides a power cord with a grounded attachment plug to use with this IBM product. To avoid electrical shock, always use the power cord and plug with a properly grounded power outlet.

IBM power cords used in the United States and Canada are listed by the Underwriters Laboratories (UL) and certified by the Canadian Standards Association (CSA).

For units intended to be operated at 115 volts: Use a UL listed and CSA certified cord set consisting of a minimum 18 AWG, type SVT or SJT, three conductor cord, a maximum of 4.5 meters (15 feet) in length and a parallel blade, grounding type attachment plug rated 15 amperes, 125 volts.

For units intended to be operated at 230 volts (U.S. use): Use a UL listed and CSA certified cord set consisting of a minimum 18 AWG, type SVT or SJT, three conductor cord, a maximum of 4.5 meters (15 feet) in length and a tandem blade, grounding type attachment plug rated 15 amperes 250 volts.

For units intended to be operated at 230 volts (outside the U.S.): Use a cord set with a grounding type attachment plug rated 13 amperes (minimum), 250 volts. The cord set should be marked <HAR> and have the appropriate safety approvals for the country in which the equipment will be installed.

**Note:** The accessible metal parts of the display power adapter output connector are not directly connected to Safety Ground.

## **Industry Canada Compliance Statement**

---

The Class B digital apparatus meets the requirements of the Canadian Interface-Causing Equipment Regulation.

## **Déclaration de Conformité Industrielle du Canada**

---

Cet appareil numérique de Catégorie B est conforme aux exigences de la Réglementation canadienne concernant les interfaces provoquant une interférence.



**TCO**

## **TCO'95 applies to 9497-AG1**

### **Mercury**

Mercury is sometimes found in batteries relays and switches. Mercury damages the nervous system and is toxic in high doses.

TCO'95 requirement states that batteries may contain no more than 25 ppm (parts per million) or mercury. It also demands that no mercury is present in any of the electrical or electronics components concerned with the display.

Mercury is, for the time being, permitted in the back light system of flat panel monitors, as there today is no commercially available alternative.

TCO aims on removing this exception when a mercury free alternative is available.



**TCO**

## **TCO'99 applies to 9497-AW1**

### **Congratulations!**

You have just purchased a TCO'99 approved and labelled product! Your choice has provided you with a product developed for professional use. Your purchase has also contributed to reducing the burden on the environment and also to the further development of environmentally adapted electronics products.

### **Why do we have environmentally labeled computers?**

In many countries, environmental labelling has become an established method for encouraging the adaptation of goods and services to the environment. The main problem, as far as computers and other electronics equipment are concerned, is that environmentally harmful substances are used both in the products and during their manufacture. Since it is not so far possible to satisfactorily recycle the majority of electronics equipment, most of these potentially damaging substances sooner or later enter nature.



There are also other characteristics of a computer, such as energy consumption levels, that are important from the viewpoints of both the work (internal) and natural (external) environments. Since all methods of electricity generation have a negative effect on the environment (e.g. acidic and climate-influencing emissions, radioactive waste), it is vital to save energy. Electronics equipment in offices is often left running continuously and thereby consumes a lot of energy.

### **What does labeling involve?**

This product meets the requirements for the TCO'99 scheme, which provides for international and environmental labeling of personal computers. The labeling scheme was developed as a joint effort by the TCO (The Swedish Confederation of Professional Employees), Svenska Naturskyddsforeningen (The Swedish Society for Nature Conservation) and Statens Energimyndighet (The Swedish National Energy Administration).

Approval requirements cover a wide range of issues: environment, ergonomics, usability, emission of electric and magnetic fields, energy consumption and electrical and fire safety.

The environmental demands impose restrictions on the presence and use of heavy metals, brominated and chlorinated flame retardants, CFCs (freons) and chlorinated solvents, among other things. The product must be prepared for recycling and the manufacturer is obliged to have an environmental policy which must be adhered to in each country where the company implements its operational policy.

The energy requirements include a demand that the computer and/or display, after a certain period of inactivity, shall reduce its power consumption to a lower level in one or more stages. The length of time to reactivate the computer shall be reasonable for the user.

Labeled products must meet strict environmental demands, for example, in respect of the reduction of electric and magnetic fields, physical and visual ergonomics and good usability.



As an ENERGY STAR Partner, IBM Corporation has determined that this product meets the ENERGY STAR guidelines for energy efficiency.

### **MPRIII**

This product complies with Swedish National Council for Metrology (MPR) standards issued in 1989 according to MPRIII /SVENSK standards SS 436 14 90 for very low frequency ( VLF) and extremely low frequency ( ELF) emissions .

## **Hinweise**

---

Gemäß der Amtsblätter des BMPT Nm. 61/1991 und 6/1992 wird der Betreiber darauf aufmerksam gemacht, daß die von ihm mit diesem Gerät zusammengestellte Anlage auch den technischen Bestimmungen dieser Amtsblätter genügen muß.

Aus ergonomischen Gründen wird empfohlen, die Grundfarbe Blau nicht auf dunklem Untergrund zu verwenden (schlechte Erkennbarkeit, Augenbelastung bei zu geringem Zeichenkontrast).

Aus ergonomischen Gründen sollten nur Darstellungen auf dunklem Hintergrund bei Vertikalfrequenzen ab 60 Hz (ohne Zeilensprung) benutzt werden.

Die Konvergenz des Bildes kann sich auf Grund des Magnetfeldes am Ort der Aufstellung aus der Korrekten Grundeinstellung verändern. Zur Korrektur empfiehlt es sich deshalb, die Regler an der Frontseite für H STAT und V STAT so einzustellen, daß die getrennt sichtbaren Farblinien für Rot, Grün und Blau bei z.B. der Darstellung eines Buchstabens zur Deckung (Konvergenz) gelangen. Siehe hierzu auch die Erklärungen zu H STAT und V STAT.

### **European Union (EU) Statement**

This product had been tested and found to comply with the limits for Class B Information Technology Equipment according to CISPR 22 / European Standard EN 55022. The limits for Class B equipment were derived for typical residential environments to provide reasonable protection against interface with licensed communication devices.

Properly shielded and grounded cables and connectors must be used in order to reduce the potential for causing interface to radio and TV communications and to other electrical or electronic equipment. Such cables and connectors are available from IBM authorised dealers.

In accordance with EN 50082-1 1992, Performance Criterion A., it should be noted that in the presence of certain electromagnetic fields, some screen jitter may be observed.

### **Spécifications de la CEE**

Ce produit a été testé et déclaré conforme aux limites de la Classe B définies

pour les équipements informatiques conformément à la norme européenne CISPR 22/EN 55022. Les limites imposées aux équipements de Classe B visent à garantir une protection raisonnable, dans des environnements résidentiels, contre toute interférence avec des équipements de communication agréés.

Des câbles blindés et correctement reliés à la terre doivent être utilisés pour réduire les risques d'interférence avec des communications radio et télévisées, ainsi qu'avec des équipements électriques ou électroniques. Ces câbles et connecteurs sont disponibles auprès de vos revendeurs IBM agréés.

Conformément à la norme EN 50082-1 1992 (Critère de Performance A), l'utilisateur doit être conscient du fait qu'en présence de certains champs électromagnétiques, l'image peut être instable.

### **Erklärung für die Europäische Union (EU)**

Dieses Produkt wurde getestet, und dabei wurde festgestellt, daß es gemäß CISPR-2 / Europäische Norm EN 55022 die Grenzwerte für Ausrüstung der Informationstechnik, Klasse B, einhält. Die Grenzwerte für Ausrüstung der Klasse B wurden für eine typische Wohnumgebung erarbeitet, um einen angemessenen Schutz vor Störungen im Zusammenhang mit zugelassenen Kommunikationsgeräten zu gewährleisten.

Es sind ordnungsgemäß abgeschirmte und geerdete Kabel und Stecker zu verwenden, um das Störungspotential in bezug auf Radio- und Fernsehempfang oder andere elektrische oder elektronische Geräte zu reduzieren. Solche Kabel und Stecker sind bei autorisierten IBM-erhältlich.

In Übereinstimmung mit EN 50082-1 1992, Leistungskriterium A wird darauf hingewiesen, daß bestimmte elektromagnetische Felder ein Flattern auf dem Bildschirm hervorrufen können.

### **Declaración de la Unión Europea (UE)**

Este producto ha sido probado y cumple con las limitaciones estipuladas para la Clase B ITE (Information Technology Equipment), de conformidad con CISPR 22 / Estándar Europeo EN 55022. Las limitaciones de los equipos de Clase B se establecieron para que los entornos residenciales típicos a fin de proporcionar una protección razonable contra interferencias con dispositivos de comunicación autorizados.

Se deben utilizar conectores y cables debidamente protegidos y conectados

a tierra a fin de reducir las posibilidades de que se produzcan interferencias con comunicaciones por radio o televisión y otros equipos eléctricos o electrónicos. Este tipo de cables y conectores pueden adquirirse en concesionarios autorizados de IBM.

De acuerdo con la norma EN 50082-1 1992, Performance Criterion A, habría que destacar que en presencia de determinados campos electromagnéticos, podría observarse una marcada inestabilidad e la imagen.

### **Dichiarazione di conformità dell'Unione Europea (EU)**

Questo prodotto è stato collaudato e trovato conforme ai limiti de Classe B relativi agli apparecchi informatici secondo quanto dispone la normativa europea CISPR 22 / EN 55022. I limiti degli apparecchi di Classe B sono stati definiti per i normali ambienti domestici al fine de fornire un'adeguata protezione con dispositivi di comunicazione autorizzati.

Utilizzare cavi e connettori collegati a terra per ridurre il rischio potenziale di interferenza delle comunicazioni radiotelevisive e di altri apparecchi elettrici o elettronici. I cavi sono disponibili presso i rivenditori IBM.

In accordo con quando previsto nel documento EN 50082-1 1992, Performance Criterion A, è importante sottolineare che in presenza di determinati campi elettromagnetici è possibile che si verifichi un certo tremolio delle immagini.

### **Europeiska unionen (EU)**

Denna produkt har testats och följer gränsvärdena för Klass B Information Technology Equipment enligt CISPR 22 / Europeisk standard EN 55022. Gränsvärden för Klass B-utrustning utgår från vanliga bostadsområden för att ge ett rimligt skydd mot störningar i kommunikationsenheter.

Korrekt avskärmade och jordade kablar och kontakter måste användas för att minska risken för störningar i radio- och TV-kommunikationer och annan elektrisk utrustning. Sådana kablar och kontakter finns tillgängliga hos auktoriserade IBM-återförsäljare.

I enlighet med EN 50082-1 1992, Performance Criterion A påpekas följande: I närheten av en del elektromagnetiska fält kan vissa bildstörningar uppstå på skärmen.

### **VCCI Class B Notice (Japan Only)**

This product complies with the limits for a Class B digital device (devices used in or adjacent to a residential environment) and conforms to the standards for information technology equipment that are set by the Voluntary Control Council for Interference for preventing radio frequency interference in residential areas.

この装置は、情報処理装置等電波障害自主規制協議会（VCCI）の基準に基づくクラス B 情報技術装置です。この装置は家庭環境で使用することを目的としていますが、この装置がラジオやテレビジョン受信機に近接して使用させると、受信障害を引き起こすことがあります。取扱説明書に従って正しい取り扱いをして下さい。

## Free Manuals Download Website

<http://myh66.com>

<http://usermanuals.us>

<http://www.somanuals.com>

<http://www.4manuals.cc>

<http://www.manual-lib.com>

<http://www.404manual.com>

<http://www.luxmanual.com>

<http://aubethermostatmanual.com>

Golf course search by state

<http://golfingnear.com>

Email search by domain

<http://emailbydomain.com>

Auto manuals search

<http://auto.somanuals.com>

TV manuals search

<http://tv.somanuals.com>