

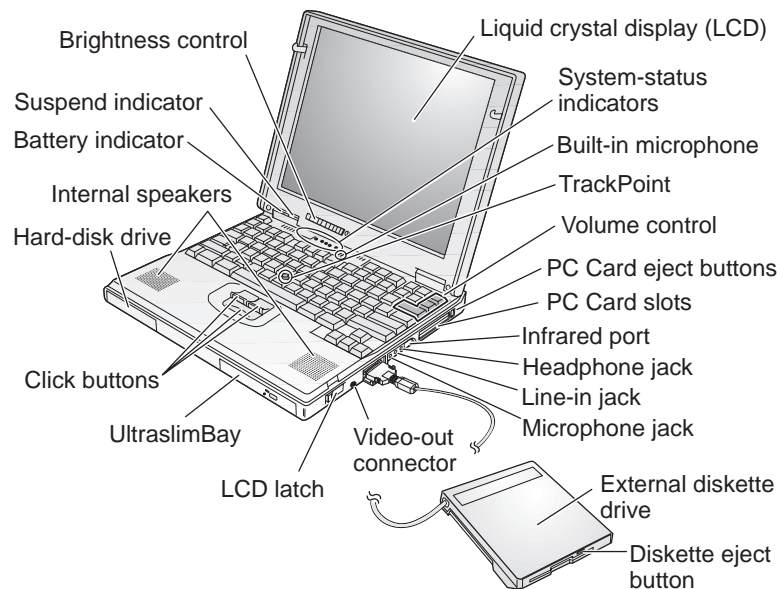
IBM ThinkPad 600X Setup Guide



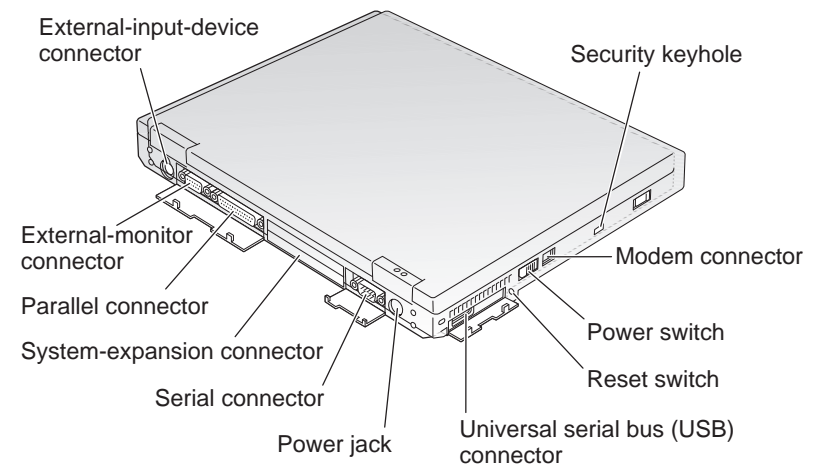
P/N: 08K9398

This guide provides information for setting up your computer for the first time.

Front view (with external diskette drive)



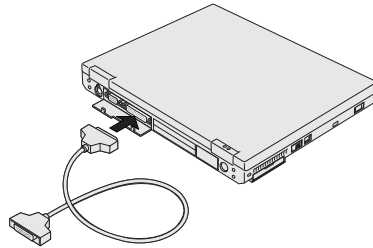
Rear view



Setting up your computer

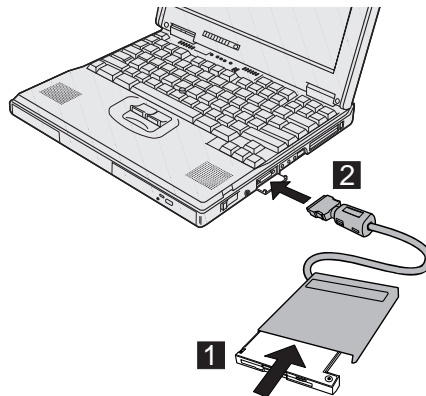
You are now ready to assemble and start your computer.

- 1** If you have a printer, open the connector cover. Connect one end of the printer cable to the parallel connector and the other end to your printer. Then power on the printer.

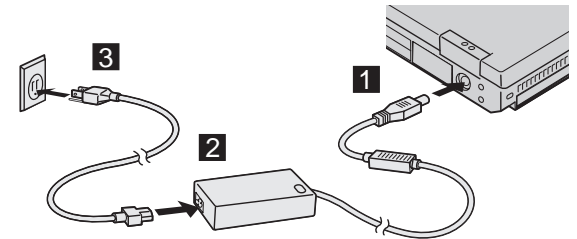


- 2** If you want to use the CD-ROM and the diskette drive at the same time, you can attach the diskette drive to the external-diskette-drive connector as follows:

Insert the diskette drive in the diskette-drive enclosure and connect it firmly **1**. Connect the cable to the external-diskette-drive connector **2**.

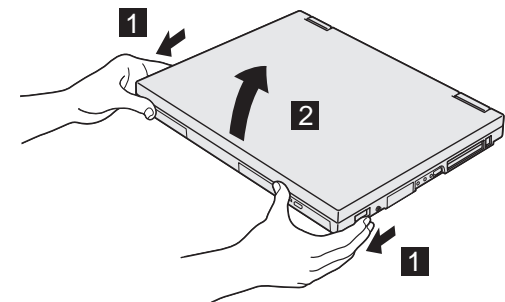


- 3** Connect the AC Adapter to the computer's power jack (at the rear of the computer) in the order shown.



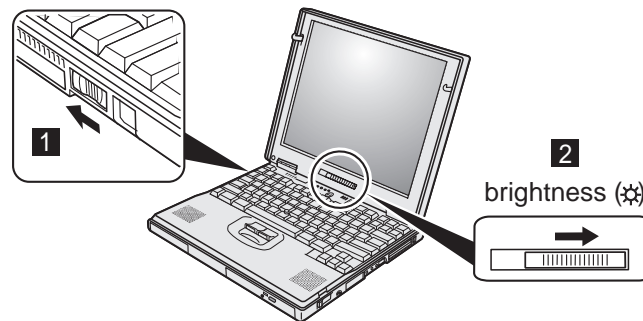
- 4** Open the liquid crystal display (LCD).

Pull the LCD latches **1** and open the LCD **2**. Then position the LCD so that it is convenient for viewing.



5 Power on the computer.

- a) Push and release the power switch **1**. The power switch automatically snaps back to its original position.
- b) Adjust the brightness of the display with the brightness control **2**.



6 If the DVD software not installed in your system, install it according to the DVD installation instructions supplied.

Registering your computer

After setting up your computer, take a few moments to complete the ThinkPad registration. The information you provide will help IBM to serve you better in the future. To register from the Windows 98 or Windows NT desktop, do the following:

1 Double-click **Register**.

2 Follow the instructions on the screen to complete the registration.

(If you want to register your computer later, follow the same procedure.)

If your computer uses another operating system, go to the following Web site to complete the registration:

<http://www.pc.ibm.com/register/>

Getting more information

After you have completed setting up your computer, you can start using it. If you want to learn more about your computer and its options, see the following:

ThinkPad 600X User's Reference	Online User's Guide
<ul style="list-style-type: none">• Getting familiar with your computer• Extending the features of your computer• Protecting your computer• Solving computer problems• Features and specifications	<ul style="list-style-type: none">• Using your computer outside your home country• Using audio, modem, and DVD features• Protecting your computer• Using your computer with a battery pack• Using your computer with a PC Card• Frequently asked questions• Resolving system resource conflicts• Installing software• Using system management• Using PS2 commands• Using modem commands• Hints on using options• Handling tips and ergonomics information• Getting service• Glossary
<p>Note: To start the <i>Online User's Guide</i>, click Start from the Windows main window, and move the cursor to Programs and ThinkPad 600; then click ThinkPad 600 User's Guide.</p>	

Check the following ThinkPad Web site for the latest information. When updates become available, they will be posted on:
<http://www.ibm.com/thinkpad/>

Free Manuals Download Website

<http://myh66.com>

<http://usermanuals.us>

<http://www.somanuals.com>

<http://www.4manuals.cc>

<http://www.manual-lib.com>

<http://www.404manual.com>

<http://www.luxmanual.com>

<http://aubethermostatmanual.com>

Golf course search by state

<http://golfingnear.com>

Email search by domain

<http://emailbydomain.com>

Auto manuals search

<http://auto.somanuals.com>

TV manuals search

<http://tv.somanuals.com>