

**HUSSMANN®/CHINO**

**Q1-DC**

**DELI SERVICE CASE**

Installation  
& Operation  
Manual

**REV. 0508**

**HUSSMANN®**

**Q1-DC  
DELI SERVICE CASE**



**P/N Q1-DC-0508**

**INSTALLATION & OPERATION GUIDE**

## General Instructions

### Table of Contents

<b>General Instructions</b> .....	<b>2</b>
<b>Cut and Plan Views</b> .....	<b>3</b>
<b>Installation</b> .....	<b>3</b>
Location .....	3
Uncrating the Stand .....	3
<b>Tighten Glass Screws</b> .....	<b>3</b>
Exterior Loading.....	3
Setting and Joining .....	3
Leveling .....	3
Q1-DC Refrigerated Wedges and Standard Cases.....	4
<b>Plumbing</b> .....	<b>5</b>
Waste Outlet and P-TRAP .....	5
Installing Condensate Drain.....	5
<b>Refrigeration</b> .....	<b>5</b>
Refrigerant Type .....	5
Piping.....	5
Refrigeration Lines.....	5
Control Settings .....	5
Access to TEV Valves and Drain Lines .....	5
Electronic Expansion Valve (Optional).....	6
Expansion Valve Adjustment .....	6
Measuring the Operating Superheat.....	6
Thermostat Location .....	6
<b>Electrical</b> .....	<b>6</b>
Wiring Color Code .....	6
Electrical Circuit Identification.....	6
Field Wiring and Serial Plate Amperage.....	6
Ballast Location .....	6
Wiring and Serial Plate Amperage.....	7
ASHRAE Color Code.....	7
<b>Finishing Touches</b> .....	<b>7</b>
Bumper Installation Tips .....	7
Installing Splashguard .....	7
<b>User Information</b> .....	<b>7</b>
Stocking .....	7
Important Steps .....	8
Case Cleaning .....	8
Cleaning Glass and Mirrors .....	8
Non-Glare Glass .....	9
Plexiglass and Acrylic Care .....	9
Cleaning.....	9
Antistatic Coatings .....	9
<b>Maintenance</b> .....	<b>10</b>
Replacing Fluorescent Lamps .....	10
Evaporator Fans .....	10
Coils.....	10
Tips and Troubleshooting .....	10
Glass Replacement and Adjustment Instructions .....	10
<b>Electrical Wiring Diagrams</b> .....	<b>11</b>
<b>Wiring Diagrams</b> .....	<b>12</b>
<b>Appendices</b> .....	<b>32</b>
Appendix A. - Temperature Guidelines - Refrigerated .....	32
Appendix B. - Application Recommendations - Refrigerated...	32
Appendix C. - Field Recommendations - Refrigerated .....	32
Appendix D. - Recommendations to User - Refrigerated .....	33

### This Booklet Contains Information on:

**Q1-DC refrigerated, service deli merchandiser.**

#### Shipping Damage

All equipment should be thoroughly examined for shipping damage before and during unloading.

This equipment has been carefully inspected at our factory and the carrier has assumed responsibility for safe arrival. If damaged, either apparent or concealed, claim must be made to the carrier.

#### Apparent Loss or Damage

If there is an *obvious loss or damage*, it must be noted on the freight bill or express receipt and signed by the carrier's agent; otherwise, carrier may refuse claim. The carrier will supply necessary claim forms.

#### Concealed Loss or Damage

When loss or damage *is not apparent until after equipment is uncrated*, a claim for concealed damage is made. Make request in writing to carrier for inspection within 15 days, and retain all packaging. The carrier will supply inspection report and required claim forms.

#### Shortages

Check your shipment for any possible shortages of material. If a shortage should exist and is found to be the responsibility of Hussmann Chino, *notify Hussmann Chino*. If such a shortage involves the carrier, *notify the carrier immediately*, and request an inspection. Hussmann Chino will acknowledge shortages within ten days from receipt of equipment.

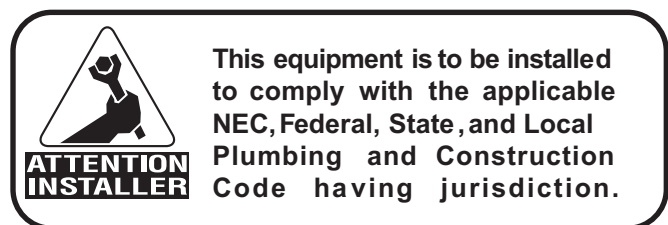
#### Hussmann Chino Product Control

The serial number and shipping date of all equipment has been recorded in Hussmann's files for warranty and replacement part purposes. All correspondence pertaining to warranty or parts ordering must include the serial number of each piece of equipment involved, in order to provide the customer with the correct parts.

Keep this booklet with the case at all times for future reference.

## HUSSMANN®/CHINO

A publication of HUSSMANN® Chino  
13770 Ramona Avenue • Chino, California 91710  
(909) 628-8942 FAX  
(909) 590-4910  
(800) 395-9229





## Installation (Cont'd)

5. Apply liberal bead of case joint sealant (butyl) to first case. Sealant area is shown using a dotted line in illustration in Step 8. Apply heavy amount to cover entire shaded area.

**DO NOT USE PERMAGUM!**



**It is the contractor's responsibility to install case(s) according to local construction and health codes.**

6. Slide second case up to first case snugly. Then level second case to the first case so glass front, bumper and top are flush.



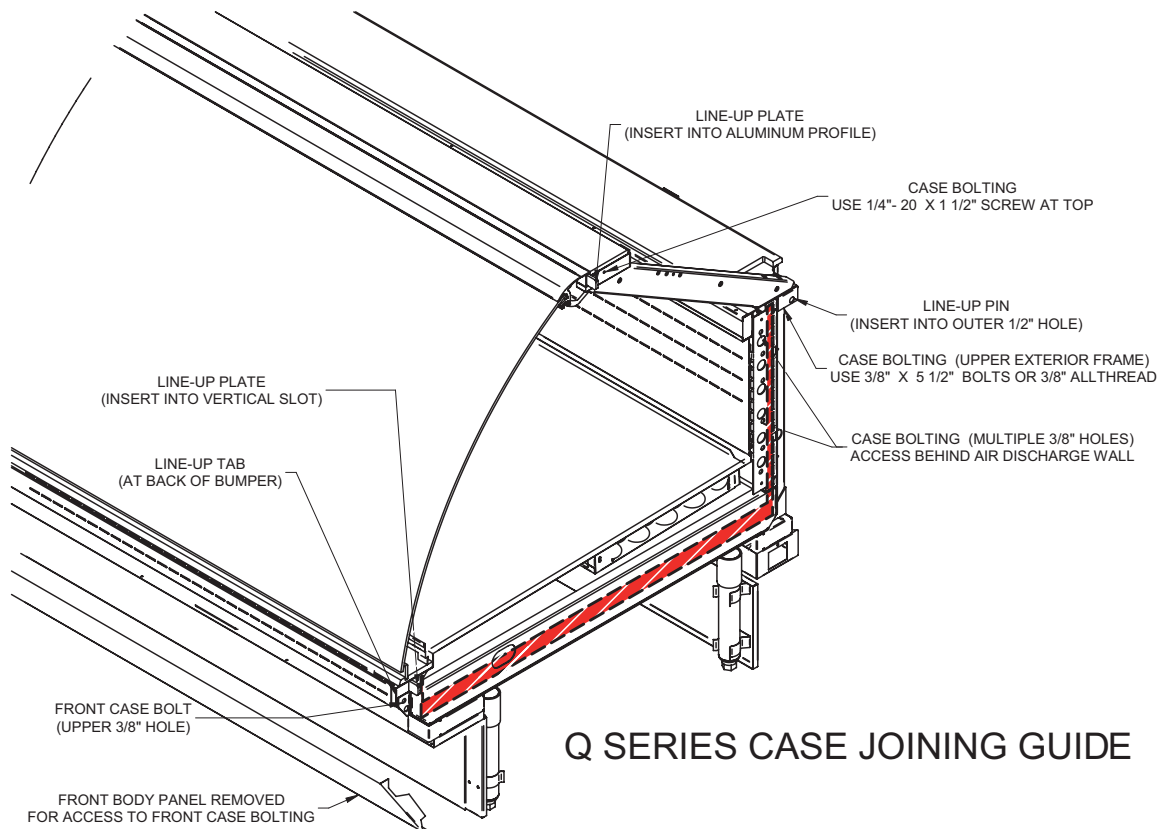
**CAUTION**

**Do not use bolts to pull cases together.**

7. To compress butyl at joint, use two Jurgenson wood clamps. Make sure case is level from front to back and side to side on inside bulkheads at joint.
8. Attach sections together via the bolts pictured in the illustration below.
9. Apply bead of butyl to top of bulkheads and slip on stainless steel bulkhead cap. Also apply silicone to seam between overhead light tubes.
10. Use finger to smooth silicone as thin as possible at masking tape on inside and outside of rear mullion (apply additional silicone if necessary). Remove tape applied on line #4.
11. Remove front, back and end shipping braces.

### Q1-DC Refrigerated Wedges and Standard Cases

Line-up taper pins and line-up plates with holes on adjoining case. Bolting is located at the rear of the case, behind the air discharge wall, and behind the front body panel. The cases are bolted together in front by means of a bracket located behind the front panel. Remove the front panel by unscrewing these bottom screws.



## Q SERIES CASE JOINING GUIDE

## Plumbing

### Waste Outlet and P-TRAP

The waste outlet is located off the center of the case on one side allowing drip piping to be run lengthwise under the fixture.

A 1-1/2" P-TRAP and threaded adapter are supplied with each fixture. The P-TRAP must be installed to prevent air leakage and insect entrance into the fixture.

**NOTE:** PVC-DWV solvent cement is recommended. Follow the Hussmann's instructions.

### Installing Condensate Drain

Poorly or improperly installed condensate drains can seriously interfere with the operation of this refrigerator, and result in costly maintenance and product losses. Please follow the recommendations listed below when installing condensate drains to insure a proper installation:

1. Never use pipe for condensate drains smaller than the nominal diameter of the pipe or P-TRAP supplied with the case.
2. When connecting condensate drains, the P-TRAP must be used as part of the condensate drain to prevent air leakage or insect entrance. Store plumbing system floor drains should be at least 14" off the center of the case to allow use of the P-TRAP pipe section. Never use two water seals in series in any one line. Double P-TRAPS in series will cause a lock and prevent draining.

3. Always provide as much down hill slope ("fall") as possible; 1/8" per foot is the preferred minimum. PVC pipe, when used, must be supported to maintain the 1/8" pitch and to prevent warping.
4. Avoid long runs of condensate drains. Long runs make it impossible to provide the "fall" necessary for good drainage.
5. Provide a suitable air break between the flood rim of the floor drain and outlet of condensate drain. 1" is ideal.
6. Prevent condensate drains from freezing:
  - a. Do not install condensate drains in contact with non-insulated suction lines. Suction lines should be insulated with a nonabsorbent insulation material such as Armstrong's Armaflex.
  - b. Where condensate drains are located in dead air spaces (between refrigerators or between a refrigerator and a wall), provide means to prevent freezing. The water seal should be insulated to prevent condensation.

## Refrigeration

### Refrigerant Type

The standard refrigerant will be R-22 unless otherwise specified on the customer order. Check the serial plate on the case for information.

### Piping

The refrigerant line outlets are located under the case. Locate first the electrical box, the outlets are then on the same side of the case, but at the opposite end. Insulate suction lines to prevent condensation drippage.

### Refrigeration Lines

<u>Liquid</u>	<u>Suction</u>
3/8" O.D.	5/8" O.D.

**NOTE:** The standard coil is piped at 1/2" (suction); however, the store tie-in may vary depending on the number of coils and the draw the case has. Depending on the case setup, the connecting point in the store may be 5/8", 7/8", or 1 1/8". Refer to the particular case you are hooking up.

Refrigerant lines should be sized as shown on the refrigeration legend furnished by the store. Install P-TRAPS (oil traps) at the base of all suction line vertical risers.

Pressure drop can rob the system of capacity. To keep the pressure drop to a minimum, keep refrigerant line run as short as possible, using the minimum number of elbows. Where elbows are required, use long radius elbows only.

### Control Settings

See Q1-DC technical data sheet for the appropriate settings for your merchandiser. Maintain these parameters to achieve near constant product temperatures. Product temperature should first be measured in the morning, after having been refrigerated overnight. For all multiplexing, defrost should be time terminated. Defrost length and frequency should be as directed in the Q1-DC technical data sheet. The number of defrosts per day should never change. The duration of the defrost cycle may be adjusted to meet conditions present at your location.

### Access to TEV Valves and Drain Lines

**MECHANICAL** - Remove product from case. Remove pans. TX valve (mechanical only) and drain are located under the pans within the case.

**ELECTRONIC** - The electronic expansion valve master and slave cylinder(s) are located within the electrical access panel(s) in the rear of case. Rear panels lift up and out.

**NOTE:** Duplex receptacles must be detached before removing rear panels.

## Refrigeration (Cont'd)

### Electronic Expansion Valve (Optional)

A wide variety of electronic expansion valves and case controllers can be utilized. Please refer to EEV and controller Hussmann's information sheet. Sensors for electronic expansion valves will be installed on the coil inlet, coil outlet, and in the discharge air. (Some supermarkets require a 4th sensor in the return air). Case controllers will be located in the electrical raceway or under the case.

### Expansion Valve Adjustment

Expansion valves must be adjusted to fully feed the evaporator. Before attempting any adjustments, make sure the evaporator is either clear or very lightly covered with frost, and that the fixture is within 10°F of its expected operating temperature.



**ATTENTION  
INSTALLER**

After case has been brought to running temperature verify screws along glass clamp aluminum extrusion are tight.

### Measuring the Operating Superheat

1. Determine the suction pressure with an accurate pressure gauge at the evaporator outlet.
2. From a refrigerant pressure temperature chart, determine the saturation temperature at the observed suction pressure.
3. Measure the temperature of the suction gas at the thermostatic remote bulb location.
4. Subtract the saturation temperature obtained in step No. 2 from the temperature measured in step No. 3.
5. The difference is superheat.
6. Set the superheat for 5°F - 7°F.

### Thermostat Location

Thermostats are located in the electrical section; behind the rear panel, on the right-hand side of the case (facing the back of the case).

## Electrical

### Wiring Color Code

STANDARD CASE WIRE COLOR CODE CODIGO DE COLORES DE LOS ALAMBRES PARA LAS VITRINAS ESTANDAR CODE COULEUR POUR FILS DE BOITIER NORMALISE		
COLOR DESCRIPTION	DESCRIPCION	DESCRIPTION
■ GROUND	TIERRA MASA	MASSE
■ ANTI-SWEAT	ANTICONDENSACION	ANTI-SUINTEMENT
■ LIGHTS	LUCES	ECLAIRAGE
■ RECEPTACLES	ENCHUFES	PRISE DE COURANT
■ T-STAT/SOLENOID 230VAC	TERMOSTATO/SOLENOIDE (230VAC)	SOUPAPE A SOLENOID (230 VAC)
■ T-STAT/SOLENOID 115VAC	TERMOSTATO/SOLENOIDE (115VAC)	SOUPAPE A SOLENOID (115 VAC)
■ T-STAT/SOLENOID 24VAC	TERMOSTATO/SOLENOIDE (24VAC)	SOUPAPE A SOLENOID (24 VAC)
■ FAN MOTORS	VENTILADORES	VENTILATEUR
BLUE CONDENSING UNIT	UNIDAD DE CONDENSACION	UNITE DE CONDENSATION

USE COPPER CONDUCTORS ONLY  
UTILISEZ LES CONDUCTEURS DE CUIVRE SEULEMENT  
UTILICE LOS CONDUCTORES DE COBRE SOLAMENTE  
430-01-0338 R101003

### CASE MUST BE GROUNDED

**NOTE:** Refer to label affixed to case to determine the actual configuration as checked in the "TYPE INSTALLED" boxes.

### Electrical Circuit Identification

Standard lighting for all models will be full length fluorescent lamps located within the case at the top. The switch controlling the lights, the plug provided for digital scale, and the thermometer are located at the rear of the case mullion.

The receptacle that is provided on the exterior back of these models is intended for computerized scales with a five amp maximum load, not for large motors or other high wattage appliances. It should be wired to a dedicated circuit.



**DANGER**

**BEFORE SERVICING  
ALWAYS DISCONNECT ELECTRICAL  
POWER AT THE MAIN DISCONNECT  
WHEN SERVICING OR REPLACING ANY  
ELECTRICAL COMPONENT.**

**This includes (but not limited to) Fans, Heaters  
Thermostats, and Lights.**

### Field Wiring and Serial Plate Amperage

Field Wiring must be sized for component amperes printed on the serial plate. Actual ampere draw may be less than specified. Field wiring from the refrigeration control panel to the merchandisers is required for refrigeration thermostats. Case amperes are listed on the wiring diagram, but always check the serial plate.

### Ballast Location

Ballasts are located within the access panel that runs the length of the rear of the case.

**Electrical (Cont'd)**

**Wiring and Serial Plate Amperage**

Field Wiring must be sized for component amperes stamped on the serial plate. Actual ampere draw may be less than specified. Field wiring from the refrigeration control panel to the merchandisers is required for refrigeration thermostats. Case amperes are listed on the wiring diagram, but always check the serial plate.

**ASHRAE Color Code**

**NOTE:** All other manufacturers have no standard sensor codes.

Case Control Systems SENSOR COLOR			
Manufacturer ® >	EIL	CPC	
Location			
Coil Inlet	Color	Blue	Blue
	Part#	225-01-1755	225-01-3255
Coil Outlet	Color	Red	Red
	Part#	225-01-1757	225-01-3123
Discharge Air	Color	Green	Green
	Part#	225-01-1756	225-01-3260
Return Air	Color	Purple	Green
	Part#	225-01-1758	225-01-3260
Defrost Term.	Color	White	Orange
	Part#	225-01-0650	225-01-3254
Liquid Line	Color	White	Blue
	Part#	225-01-0650	225-01-3255

**Finishing Touches**

**Bumper Installation Tips**

1. Start to attach the bumper at one end of the lineup, preferably on a straight case.
2. Push the end of the bumper into the bumper channel firmly. This may be difficult if bumper is cold.
3. Bend the bumper backwards to open and guide it forward onto the bumper channel.
4. An inside bumper miter must be cut on wedges.
5. Loose ends on miters must be anchored with screws on the bottom edge.
6. The top and bottom edges of the bumper must be firmly seated into the retainer by applying with a rubber mallet (not by hand).
7. The bumper should be struck by the mallet at a slight angle that forces the bumper back into itself to prevent stretching. The installation can be made easier by applying a paraffin block to the retainer grooves.

**Installing Splashguard**

After merchandisers have been leveled and joined, and all drip piping, electrical and refrigeration work has been completed, install the splashguards. Splashguards may be sealed to the floor using a vinyl cove base trim. The size of trim needed will depend on how much the floor is out of level.

**NOTE:** The splashguard must be removable to allow access to components behind it.

1. Remove all dirt, wax, debris, etc. from the area of the splashguard to ensure a secure adhesion.
2. Apply a good contact cement to the trim, allowing a proper dry time.
3. Install trim to the splashguard so that it is flush with the floor.

**User Information**

**Stocking**

Improper temperature and lighting will cause serious product loss. Discoloration, dehydration and spoilage can be controlled with proper use of the equipment and handling of product. Product temperature should always be maintained at a constant and proper temperature. This means that from the time the product is received, through storage, preparation and display, the temperature of the product must be controlled to maximize life of the product. Hussmann cases were not designed to "heat up" or "cool down" product - but rather to maintain an item's proper temperature for maximum shelf life. To achieve the protection required always:

1. Minimize processing time to avoid damaging temperature rise to the product. Product should be at proper temperature.
2. Keep the air in and around the case area free of foreign gasses and fumes or food will rapidly deteriorate.

3. Maintain the display merchandisers temperature controls as outlined in the refrigerator section of this manual.
4. Do not place any product into these refrigerators until all controls have been adjusted and they are operating at the proper temperature. Allow merchandiser to operate a minimum of six (6) hours before stocking with any product.
5. When stocking, never allow the product to extend beyond the recommended load limit. Air discharge and return air flow must be unobstructed at all times to provide proper refrigeration.
6. There are vents located at the base of the front of the glass, just above the front rail. These vents supply a continuous, gentle flow of air across the front glass which inhibits condensation. Do not place any signs or other restrictive objects on the front of the refrigerator that will block these vents.

## User Information (Cont'd)

7. Keep the service doors closed (when applicable). Refrigeration performance will be seriously affected if left open for a prolonged period of time.
8. Avoid the use of supplemental flood or spot lighting. Display light intensity has been designed for maximum visibility and product life at the factory. The use of higher output fluorescent lamps (H.O. and V.H.O.), will shorten the shelf life of the product.
9. In the Deli, Meat and Fish cases, completely cover the product each night with a clean damp cloth or butcher paper (never use plastic, as it does not allow for proper circulation). Make sure the cloth or paper is in direct contact with the product.
10. Turn and rotate the meat fairly often. The blood which gives the pink color works its way downward with time.
11. Cold coils remove heat and moisture from the case and deposit this as frost onto the coil. Thus, a defrost is required. Our humidity system induces moisture into the case and helps slow down the dehydration process. The only other moisture within the case is that in the product itself. A single level of meat will dry out faster than a fully loaded case of 3-4 levels of meat.

### Important Steps

1. Do not set temperature too cold, as this causes product dehydration. **Product Temperature: 33°-35°F!** Set thermostat to cut in at 28°F discharge air. Meat holding box: 32°F. Meat prep room: 55°F. Meat bloom box: 36°F. Process the meat to enter case at 40°F or below. Product deterioration is very rapid above 40°F.
2. Temperature control should be by means of a T-STAT and Suction Stop Solenoid at each case. Do not use EPR valves, Liquid line solenoids or electronic control devices of any kind, as these allow temperature swings causing dehydration and excessive energy consumption.
3. Product should be worked and rotated on a regular basis, not to exceed a 4 hour period.
4. At night, turn off case lights and cover the product with a damp (not wet) cloth similar to cheese cloth (etc.). This should be washed out in the morning and kept in a walk-in box during the day - so that it is cool and moist when covering the product.
5. Discharge air temperature should be approximately 26°F, with between 150-200 FPM air velocity. Do not display product directly within the air discharge.
6. Clean humidity system a minimum of every 90 days for proper system operation.

### Case Cleaning

Long life and satisfactory performance of any equipment are dependent upon the care given to it. To insure long life, proper sanitation and minimum maintenance costs, the refrigerator should be thoroughly cleaned frequently. SHUT OFF FAN DURING CLEANING PROCESS. It can be unplugged within the case, or shut off entire case at the source. The interior bottom may be cleaned with any domestic soap or detergent based cleaners. Sanitizing solutions will not harm the interior bottom, however, these solutions should always be used according to the Hussmann's directions. It is essential to establish and regulate cleaning procedures. This will minimize bacteria causing discoloration which leads to degraded product appearance and significantly shortening product shelf life.

*Soap and hot water are not enough to kill this bacteria. A sanitizing solution must be included with each cleaning process to eliminate this bacteria.*

1. Scrub thoroughly, cleaning all surfaces, with soap and hot water.
2. Rinse with hot water, but do not flood.
3. Apply the sanitizing solution according to Hussmann's directions.
4. Rinse thoroughly.
5. Dry completely before resuming operation.

### Cleaning Glass and Mirrors

Only use a soft cloth and mild glass cleaner for cleaning any glass or mirrored components. Be sure to rinse and/or dry completely.

**Never use hot water on cold glass surfaces! It may shatter and cause serious injury!** Allow glass surfaces to warm first.



### PRECAUTION CLEANING PRECAUTIONS

#### When cleaning:

- Do not use high pressure water hoses
- Do not introduce water faster than waste outlet can drain
- NEVER USE A CLEANING OR SANITIZING SOLUTION THAT HAS AN OIL BASE (these will dissolve the butyl sealants) or an AMMONIA BASE (this will corrode the copper components of the case)

#### TO PRESERVE THE ATTRACTIVE FINISH:

- DO USE WATER AND A MILD DETERGENT FOR THE EXTERIOR ONLY
- DO NOT USE ABRASIVES OR STEEL WOOL PADS AS THESE WILL MAR THE FINISH



---

## User Information (Cont'd)

### Non-Glare Glass

The high optical clarity of this glass is possible due to special coatings on the glass surface itself. To preserve this coating and the optical clarity, keep the glass clean.

Water is the only solution recommended for use in cleaning non-glare glass. The damage to the glass from improper, caustic solutions is irreparable.

In addition to cleaning the glass with the recommended product, there are precautions that should be taken when working and cleaning the inside of the case.

- When cleaning the inside of the cases, we recommend that the glass be fully opened and covered to prevent solutions from splashing onto the glass and ruining the coating on the inside.

### Plexiglass and Acrylic Care

Improper cleaning not only accelerates the cleaning cycle but also degrades the quality of this surface. Normal daily buffing motions can generate static cling attracting dust to the surface. Incorrect cleaning agents or cleaning cloths can cause micro scratching of the surface, causing the plastic to haze over time.

### Cleaning

Hussmann recommends using a clean damp chamois, or a paper towel marked as "dust and abrasive free" with **210® Plastic Cleaner and Polish** available by calling Sumner Labs at **1-800-542-8656**. Hard, rough cloths or paper towels will scratch the acrylic and should not be used.

### Antistatic Coatings

The **210®** has proven to be very effective in not only cleaning and polishing the Plexiglass surface, but also providing antistatic and anti-fog capabilities. This product also seals pores and provides a protective coating.

## Maintenance



### IMPORTANT INFORMATION

**FOR PROMPT SERVICE** Have case Model and Serial Number ready!  
This information is located on the nameplate of the unit.



### DANGER

**BEFORE SERVICING**  
**ALWAYS DISCONNECT ELECTRICAL POWER AT THE MAIN DISCONNECT WHEN SERVICING OR REPLACING ANY ELECTRICAL COMPONENT.**

This includes (but not limited to) Fans, Heaters, Thermostats, and Lights.

### Replacing Fluorescent Lamps

Fluorescent lamps are furnished with a shatterproof protective coating. The same type of lamp with protective coating must be used if replaced.

# HUSSMANN®

ENCAPSULITE

SHATTERPROOF COATING - SA 10645



Complies with FDA USDA  
& OSHA Regulations



for replacement call:  
**1-800-395-9229**

→ Turn switch off then on after replacing bulb ←

### Evaporator Fans

The evaporator fans are located at the center front of these merchandisers directly beneath the display pans. *Should fans or blades need servicing, always replace fan blades with the raised embossed side of the blade TOWARD THE MOTOR.*

### Coils

The copper coils used in Hussmann merchandisers may be repaired in the field. Materials are available from local refrigeration wholesalers.

Hussmann recommends using #15 Sil-Fos for repairs.

### Tips and Troubleshooting

**Before calling for service, check the following:**

1. Check electrical power supply to the equipment for connection.
2. Check fixture loading. Overstocking case will affect its proper operation.
3. If frost is collecting on fixture and/or product, check that Humidity Control is working properly, and that no outside doors or windows are open - allowing moisture to enter store.



### PRECAUTION

#### CLEANING PRECAUTIONS

When cleaning:

- Do not use high pressure water hoses
- Do not introduce water faster than waste outlet can drain
- NEVER USE A CLEANING OR SANITIZING SOLUTION THAT HAS AN OIL BASE (these will dissolve the butyl sealants) or an AMMONIA BASE (this will corrode the copper components of the case)

**TO PRESERVE THE ATTRACTIVE FINISH:**

- DO USE WATER AND A MILD DETERGENT FOR THE EXTERIOR ONLY
- DO NOT USE ABRASIVES OR STEEL WOOL PADS AS THESE WILL MAR THE FINISH

### Glass Replacement and Adjustment Instructions

In order to replace or adjust the glass, the glass must be placed in the raised position. The underside of the clamp is exposed, revealing the tightening screws. By turning these screws counterclockwise 1/4 turn each, the glass will be loosened for either removal or adjustment.

**Note:** Do not overtighten the screws since damage may occur.

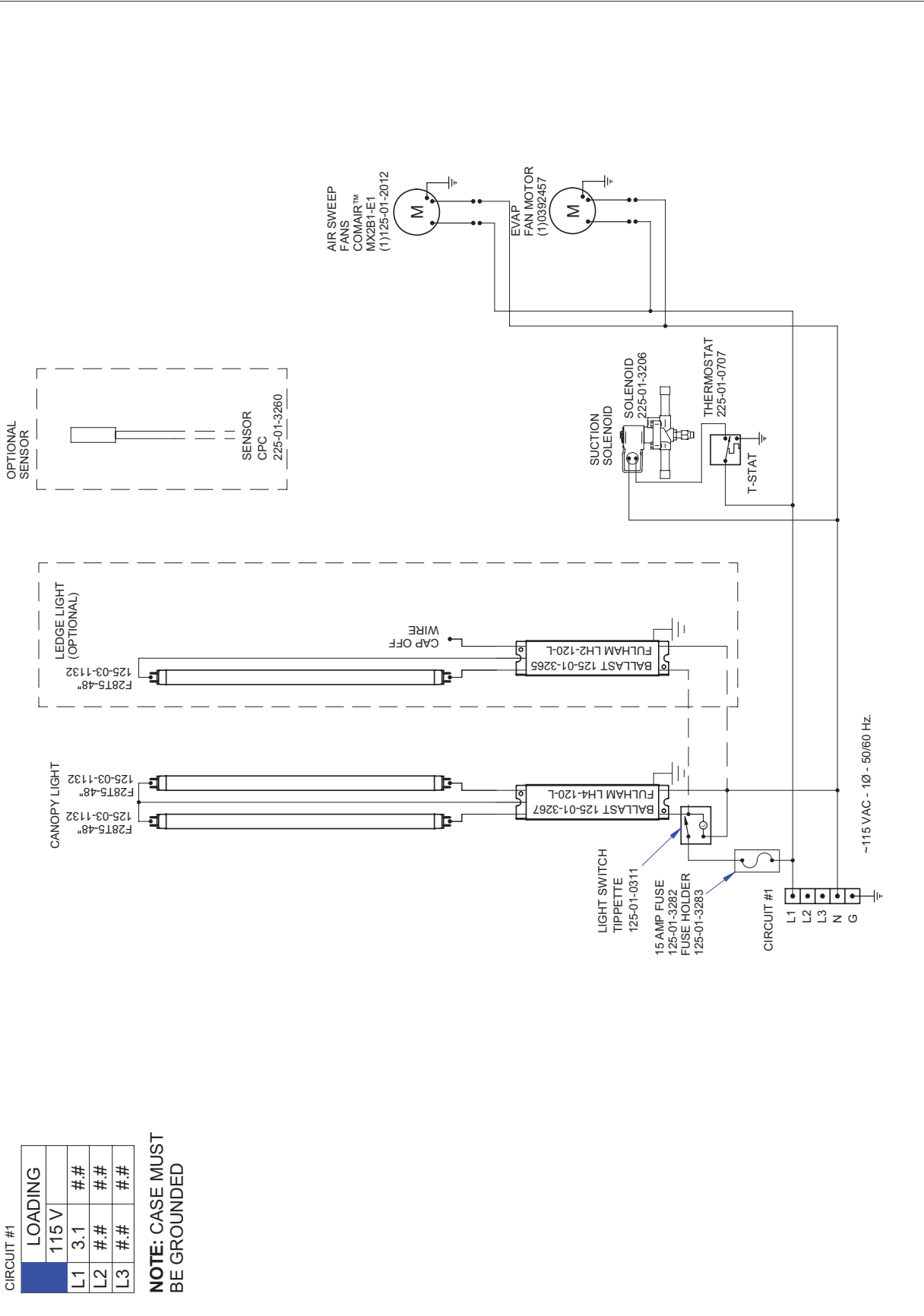
---

**Electrical Wiring Diagrams**


---

Q1-DC	Q1-DC-4R	4'	W1750001
Deli-Curve Glass	Q1-DC-6R	6'	W1750002
RJ-45,Ledge Lights	Q1-DC-8R	8'	W1750003
		12'	W1750005
Q1-DC	Q1-DC-4R	4'	W1750006
	Q1-DC-5R	5'	W1750026
Deli-Curve Glass	Q1-DC-6R	6'	W1750007
Standard Case	Q1-DC-8R	8'	W1750008
	Q1-DC-9R	9'	W1750009
	Q1-DC-10R	10'	W1750009
	Q1-DC-12R	12'	W1750010
Q1-DC-S	Q1-DC-3S	3'	W1750034-01
	Q1-DC-4S	4'	W1750034-02
	Q1-DC-5S	5'	W1750034-03
	Q1-DC-6S	6'	W1750034-04
	Q1-DC-7S	7'	W1750034-05
	Q1-DC-8S	8'	W1750034-06
	Q1-DC-9S	9'	W1750034-07
	Q1-DC-10S	10'	W1750034-08
	Q1-DC-11S	11'	W1750034-09
	Q1-DC-12S	12'	W1750034-10

Wiring Diagrams

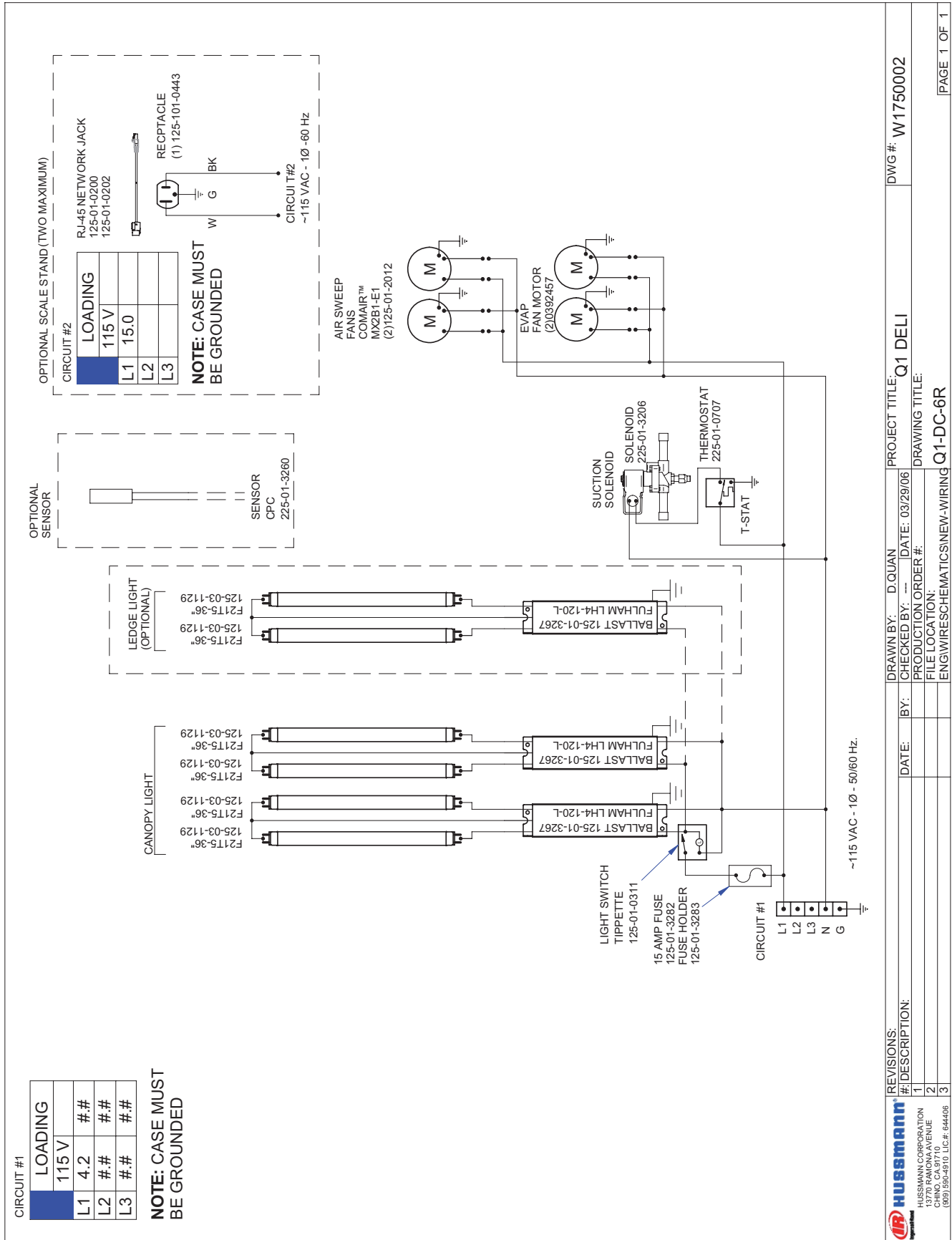


CIRCUIT #1	
LOADING	
115V	
L1	3.1 ##
L2	##
L3	##

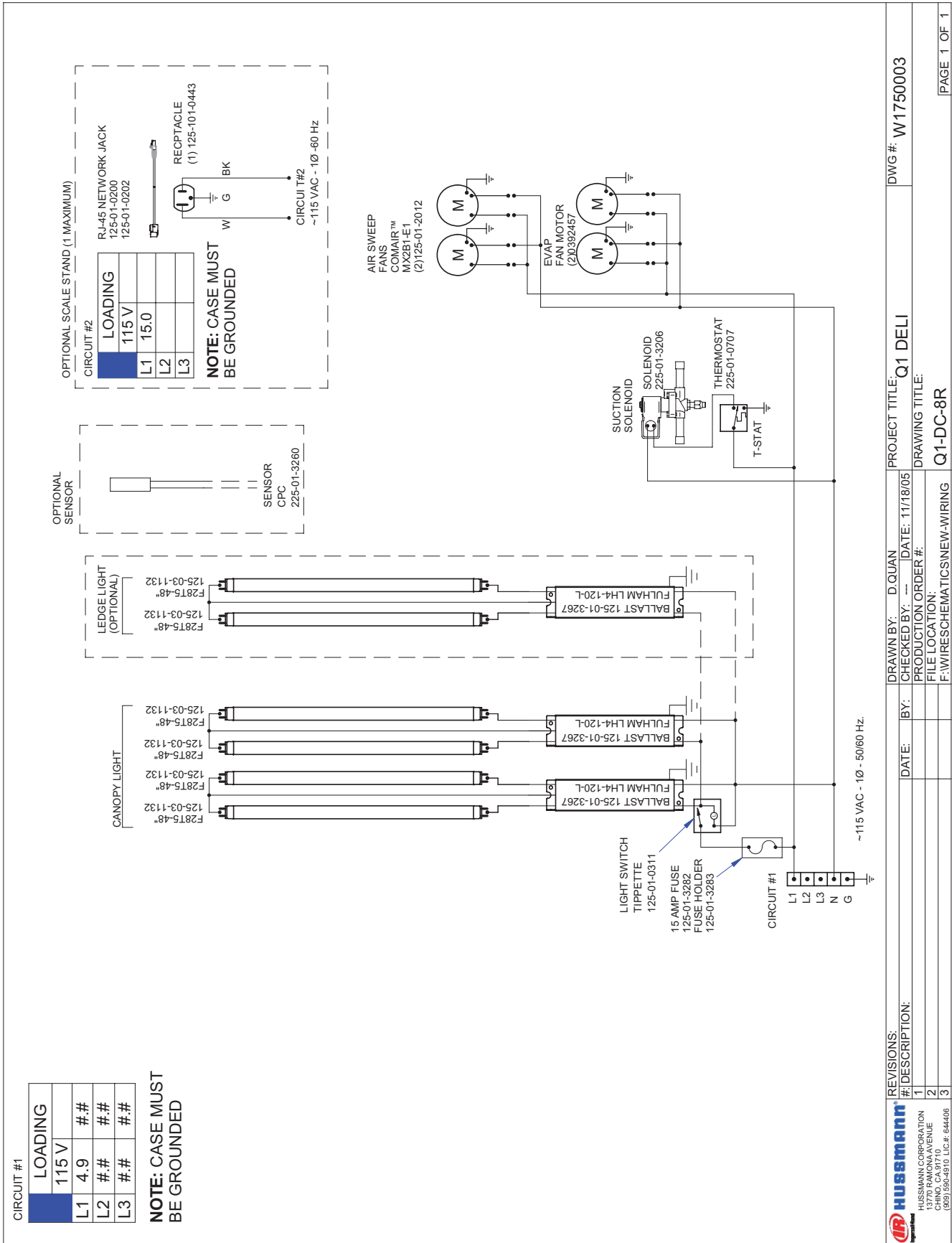
**NOTE: CASE MUST BE GROUNDED**

<b>REVISIONS:</b> #1 DESCRIPTION: REVISED BALLAST TO LH-2 (ECN=10665) 2 3		DRAWN BY: D.QUAN CHECKED BY: -- DATE: 12/01/05 PRODUCTION ORDER #: FILE LOCATION: F:\WIRES\SCHEMATICS\NEW-WIRING	PROJECT TITLE: Q1 DELI DWG #: W1750001
HUSSMANN CORPORATION 1370 RAMONA AVENUE CHINO, CA 91710 (909) 590-4910 LIC#: 644406		DRAWING TITLE: Q1-DC-4R PAGE 1 OF 1	

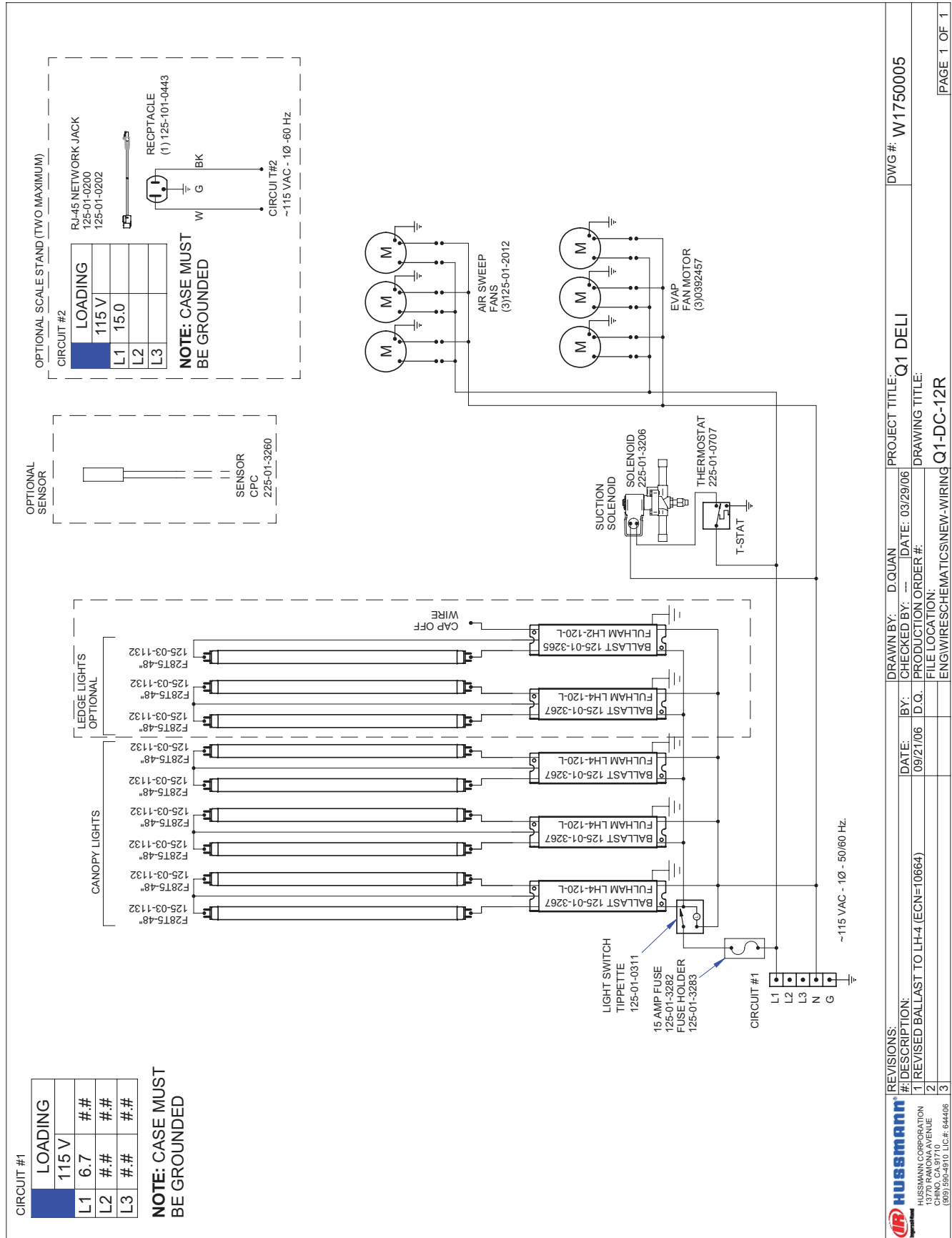
Wiring Diagrams (Cont'd)



Wiring Diagrams (Cont'd)



Wiring Diagrams (Cont'd)

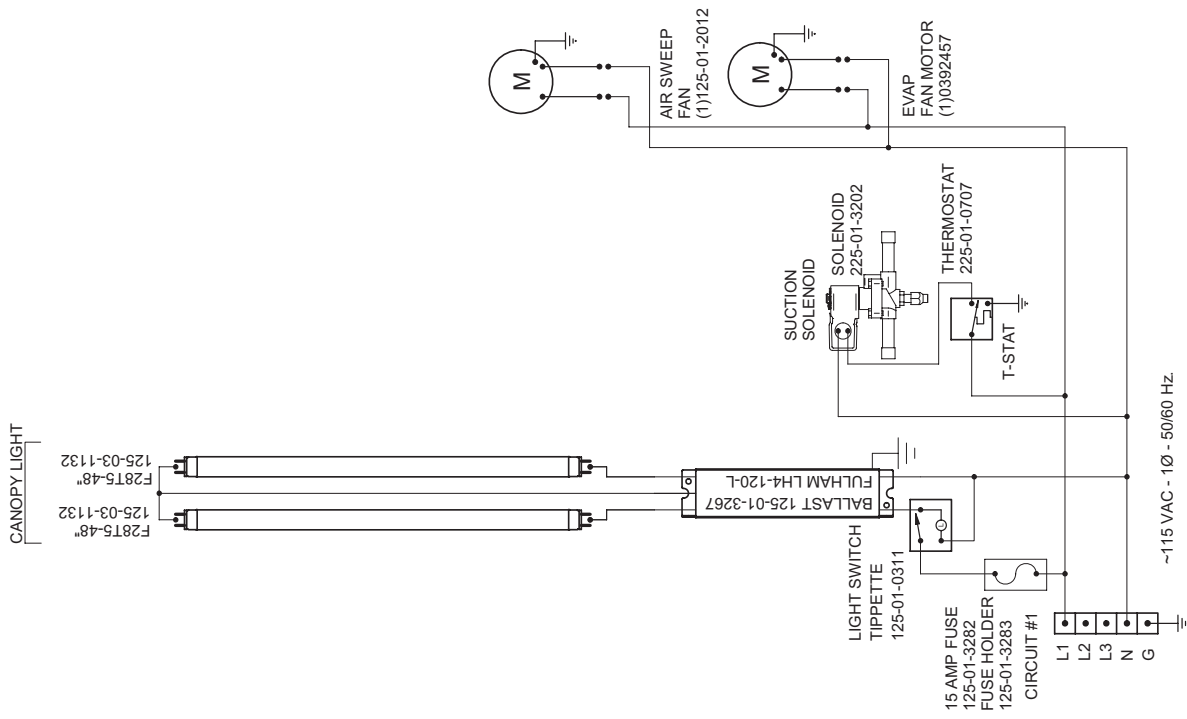


Wiring Diagrams (Cont'd)

CIRCUIT #1

LOADING	
115V	
L1	##
L2	##
L3	##

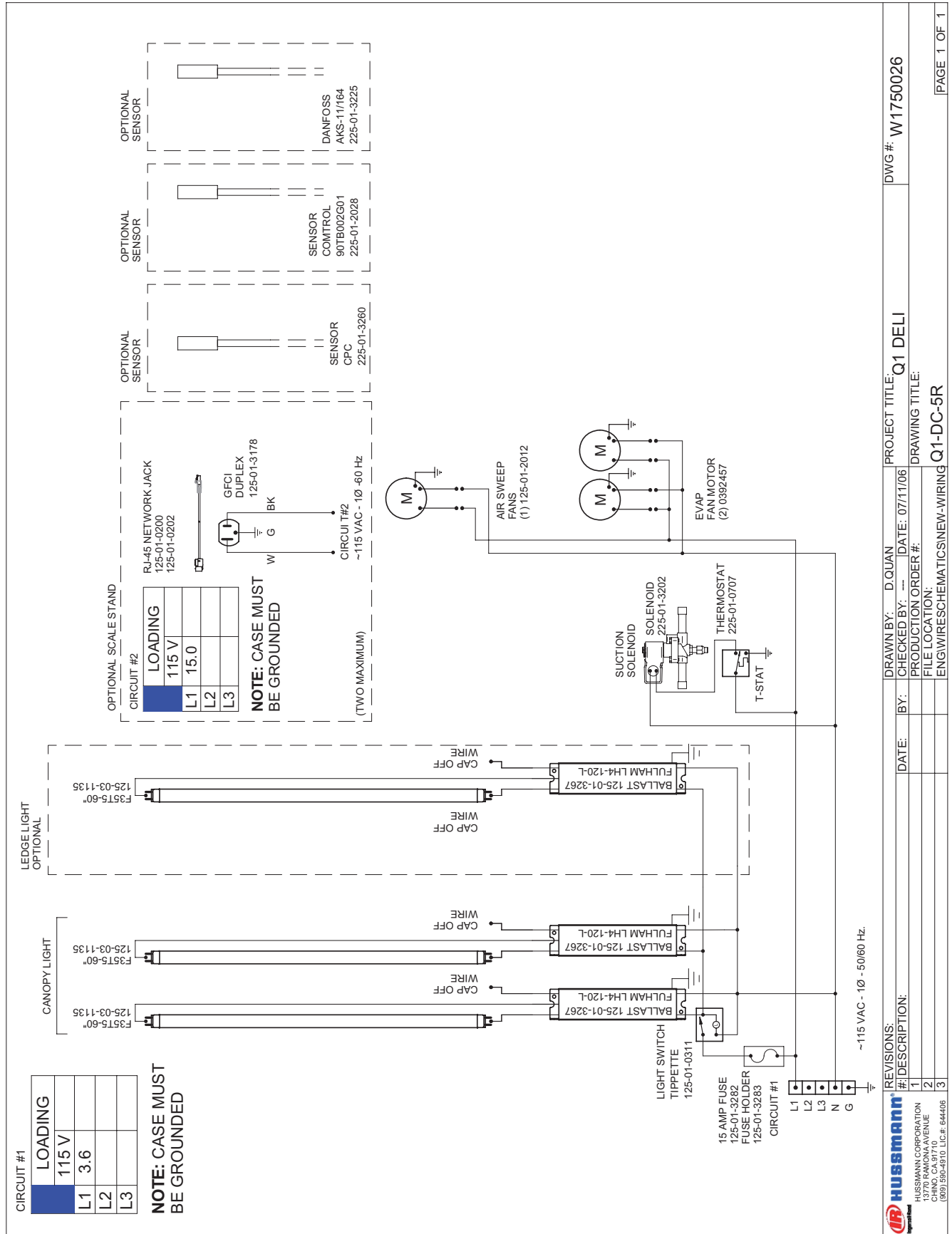
**NOTE: CASE MUST BE GROUNDED**



		REVISIONS: #1 DESCRIPTION: REVISED BALLAST TO LH-4 (ECN=10663) 2 3	DRAWN BY: D. QUAN CHECKED BY: --- DATE: 02/02/06 PRODUCTION ORDER #: FILE LOCATION: F:\WIRES\SCHEMATICS\NEW-WIRING	PROJECT TITLE: Q1 DELI DRAWING TITLE: Q1-DC-4R	DWG #: W1750006 PAGE 1 OF 1
--	--	---	--	---	--------------------------------



Wiring Diagrams (Cont'd)



PROJECT TITLE: Q1 DELI  
 DWG #: W1750026

DATE: 07/11/06  
 CHECKED BY: D. QUAN  
 DRAWN BY: D. QUAN

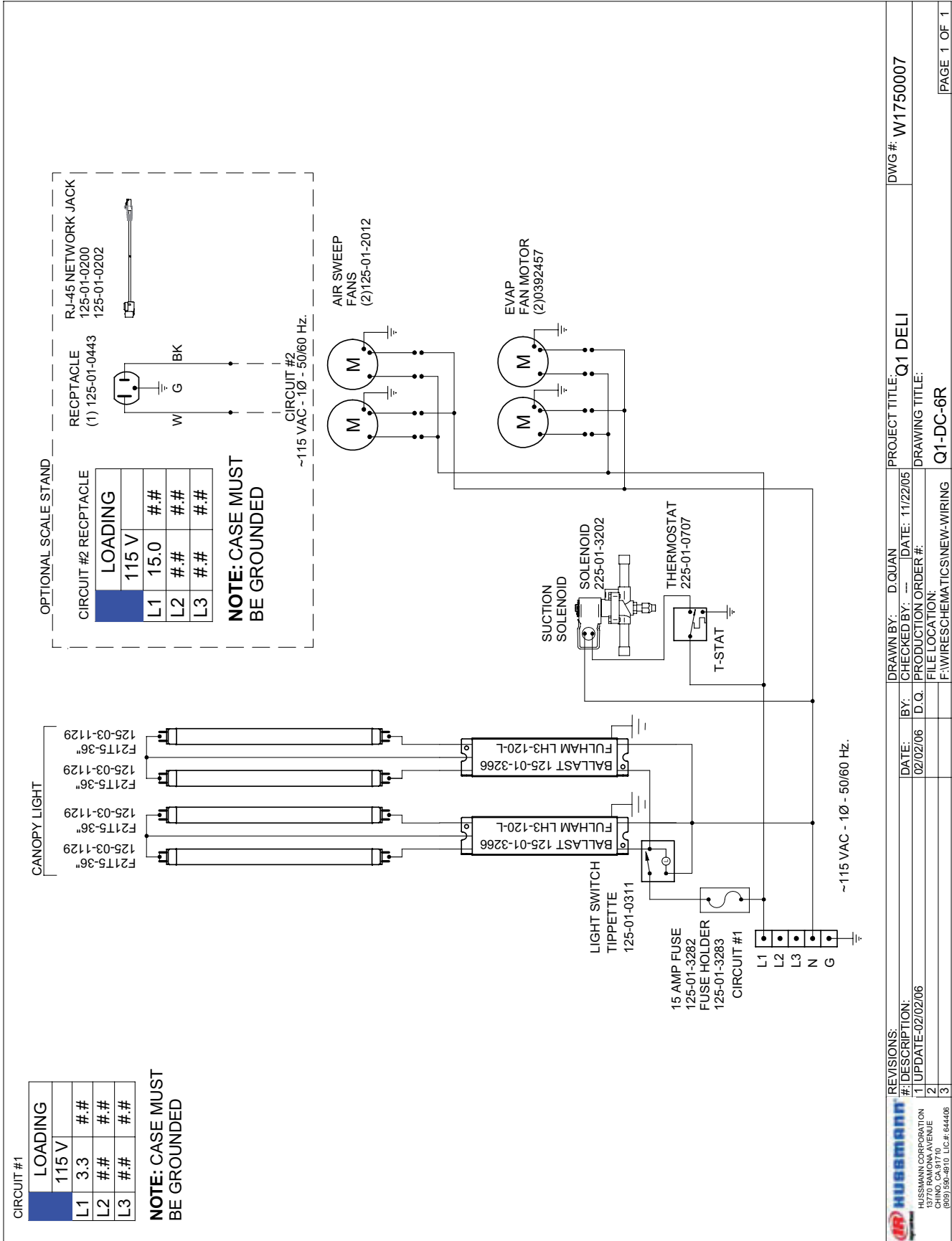
PRODUCTION ORDER #:  
 FILE LOCATION: ENG\WIRESCHEMATIC\NEW-WIRING

REVISIONS:

#	DESCRIPTION
1	
2	
3	

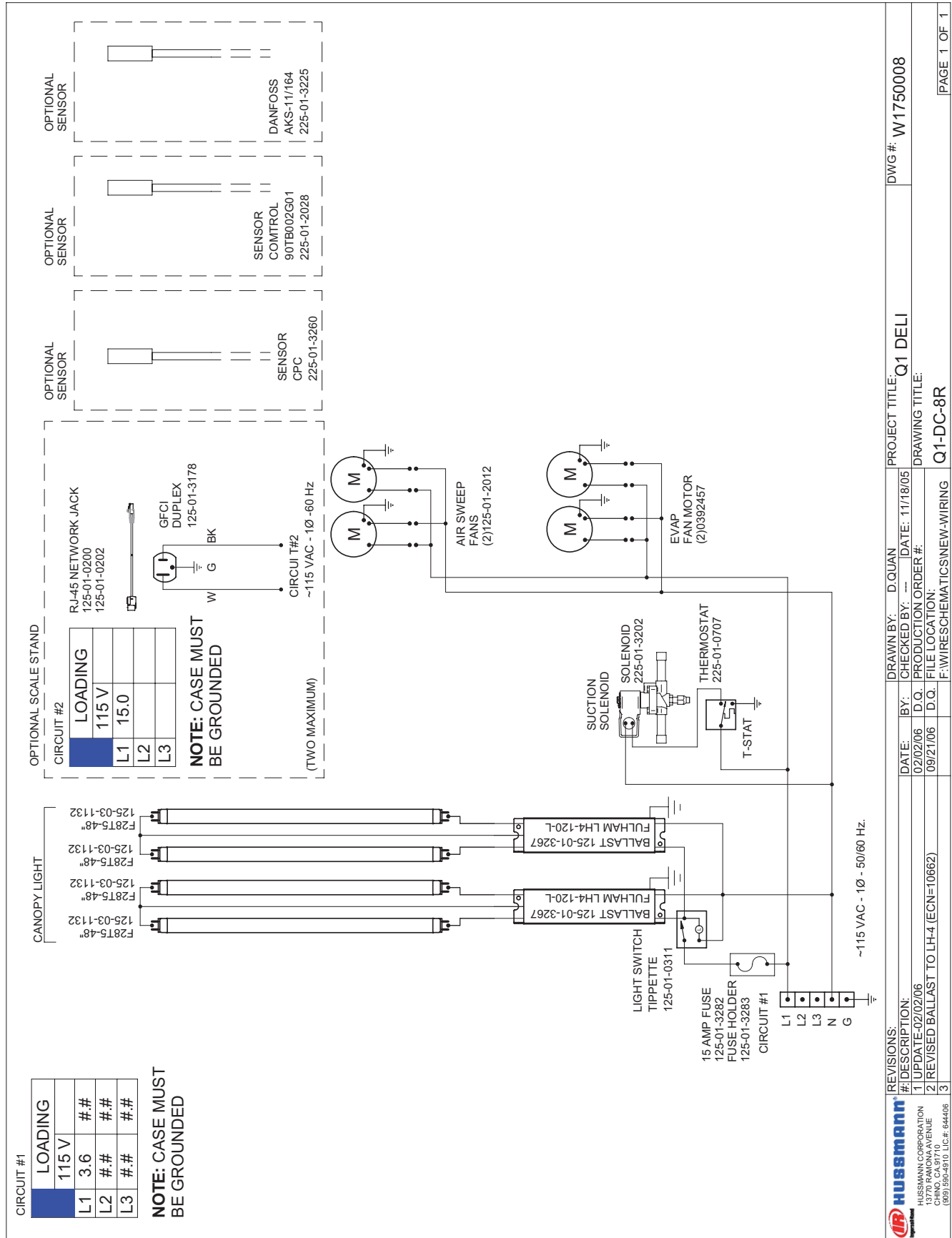
**Hussmann**  
 HUSSMANN CORPORATION  
 1370 RAMONA AVENUE  
 CHINO, CA 91710  
 (909) 590-4910 LIC #: 644406

Wiring Diagrams (Cont'd)

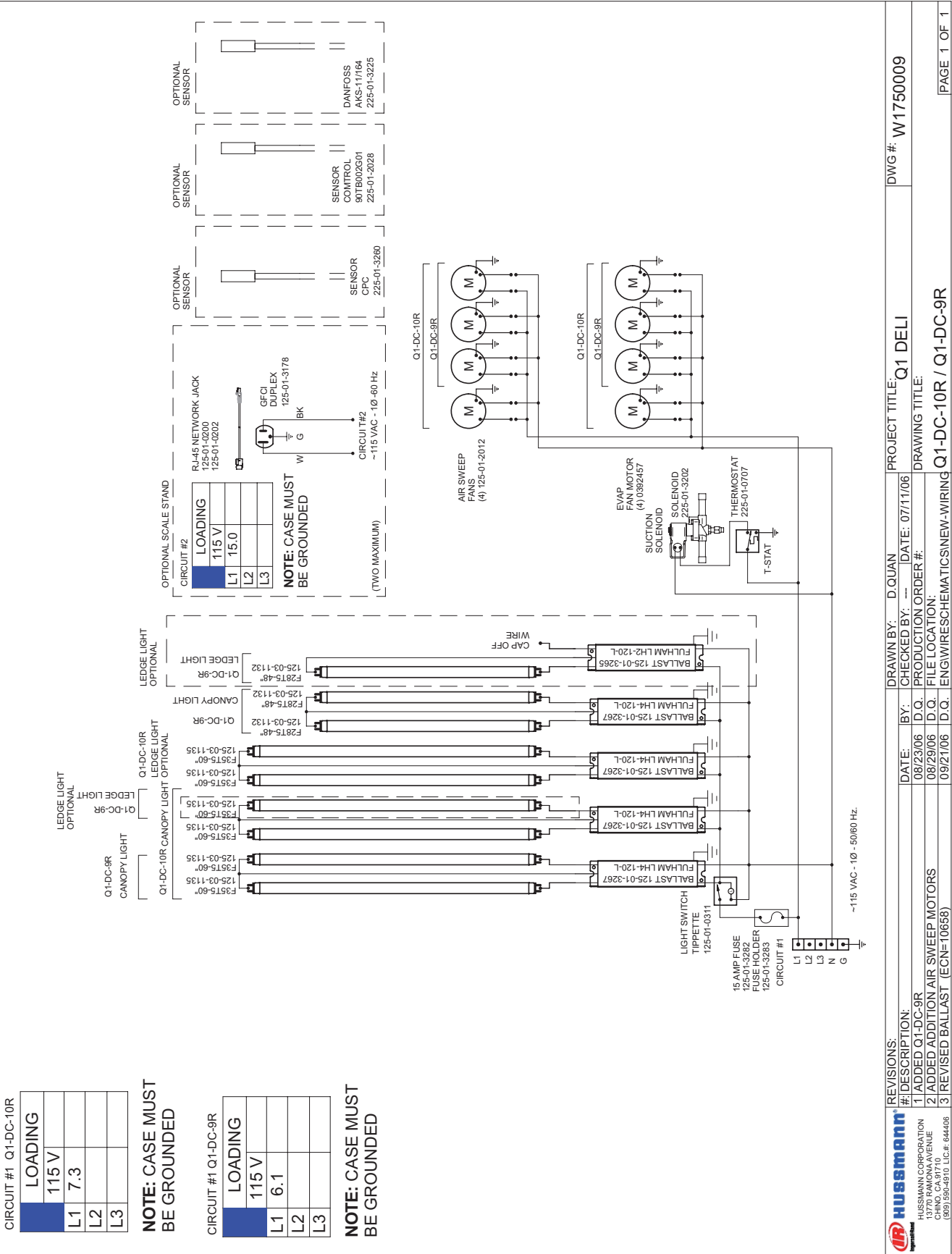


<b>REVISIONS:</b>		DATE:	BY:	DRAWN BY:	D.Q.	DATE:	11/22/05	PROJECT TITLE:	Q1 DELI	DWG #:	W1750007
1	DESCRIPTION:	02/02/06	D.O.	FILE LOCATION:	F:\WIRES\SCHEMATICS\NEW-WIRING	DRIVING TITLE:	Q1-DC-6R				
2	UPDATE:02/02/06										
3											

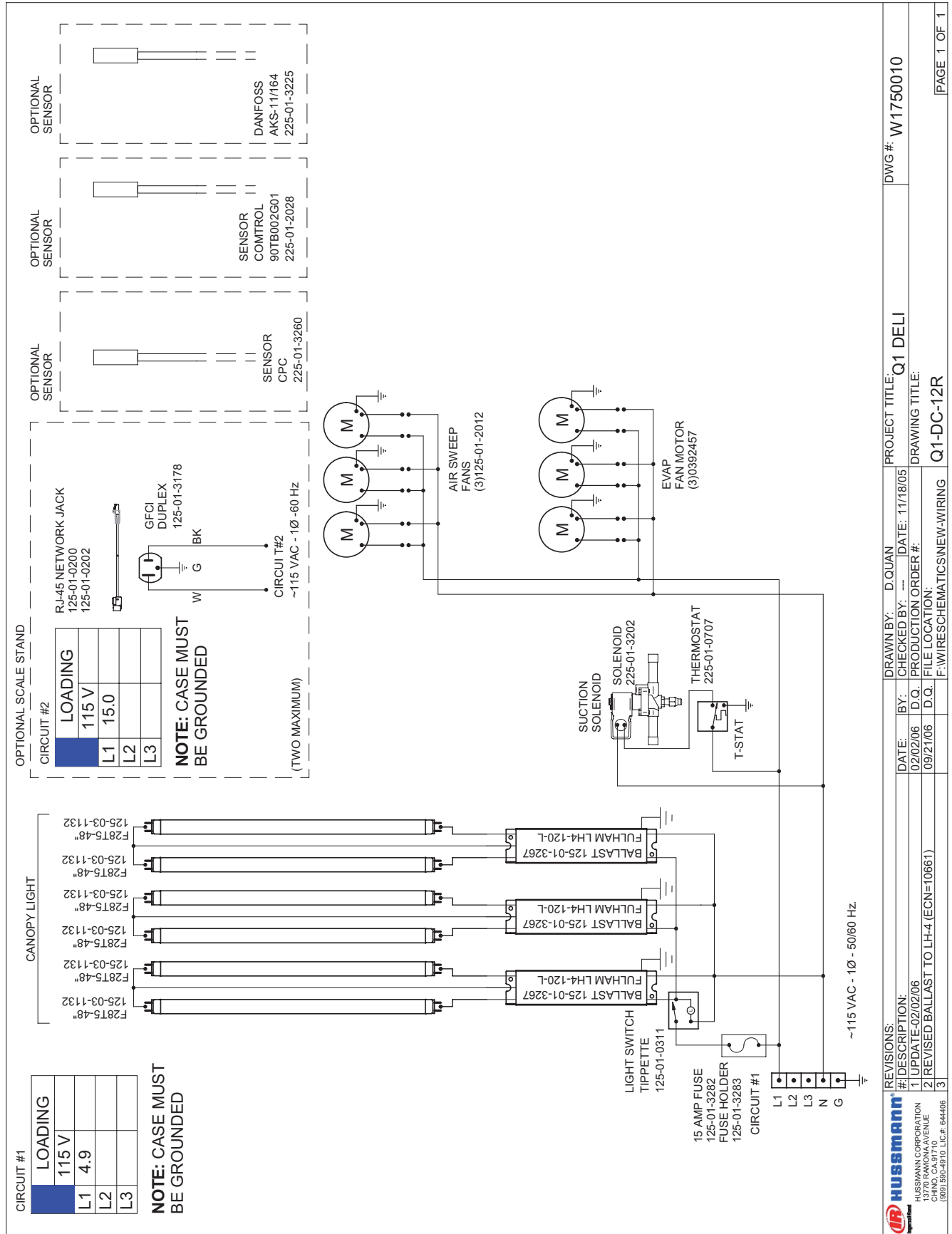
Wiring Diagrams (Cont'd)



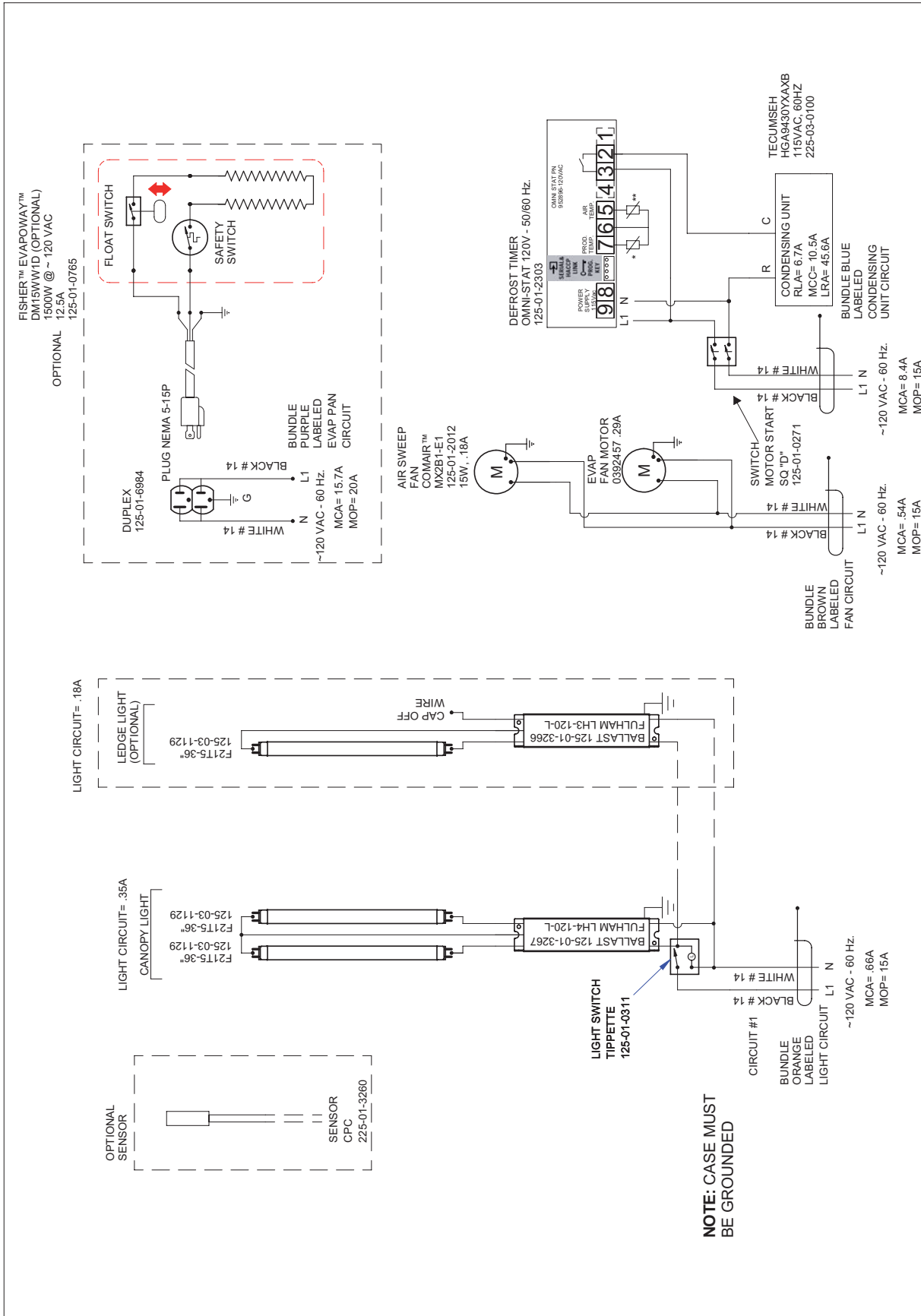
Wiring Diagrams (Cont'd)



Wiring Diagrams (Cont'd)

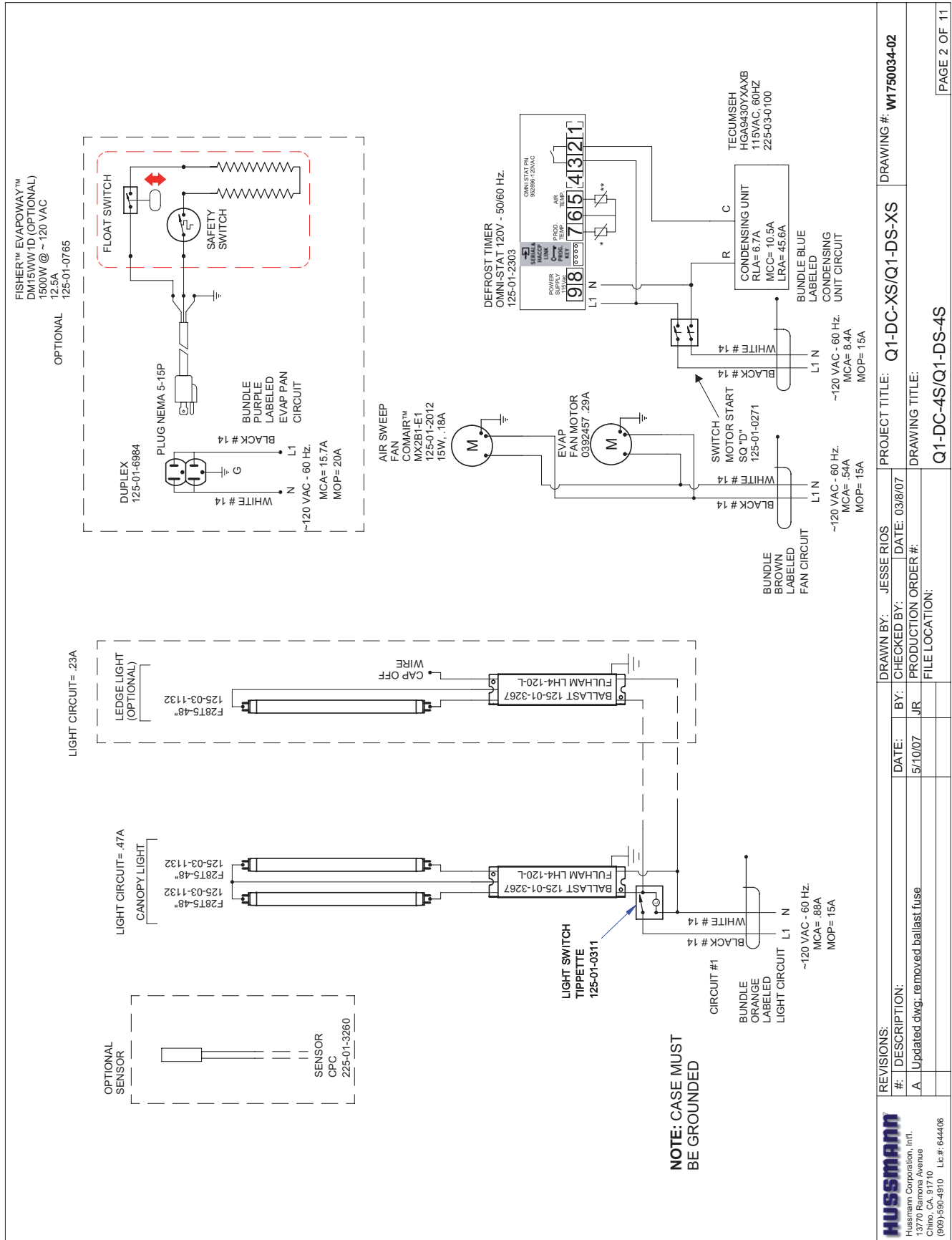


Wiring Diagrams (Cont'd)



DRAWN BY: JESSE RIOS		PROJECT TITLE: Q1-DC-XS/Q1-DS-XS		DRAWING #: W1750034-01	
DATE: 03/08/07	CHECKED BY:	DATE: 03/08/07	BY:	DATE: 03/08/07	FILE LOCATION:
5/10/07	JR	5/10/07	JR	5/10/07	Q1-DC-3S/Q1-DS-3S
REVISIONS:		DRAWING TITLE:			
#:	DESCRIPTION:	DRAWING TITLE:			
A	Updated dwg: removed ballast fuse	Q1-DC-3S/Q1-DS-3S			
HUSMANN		PAGE 1 OF 11			
Hussmann Corporation, Inc. 13770 Central Expressway Chico, CA 95926 (909) 590-4810 Lic.# 644406					

Wiring Diagrams (Cont'd)



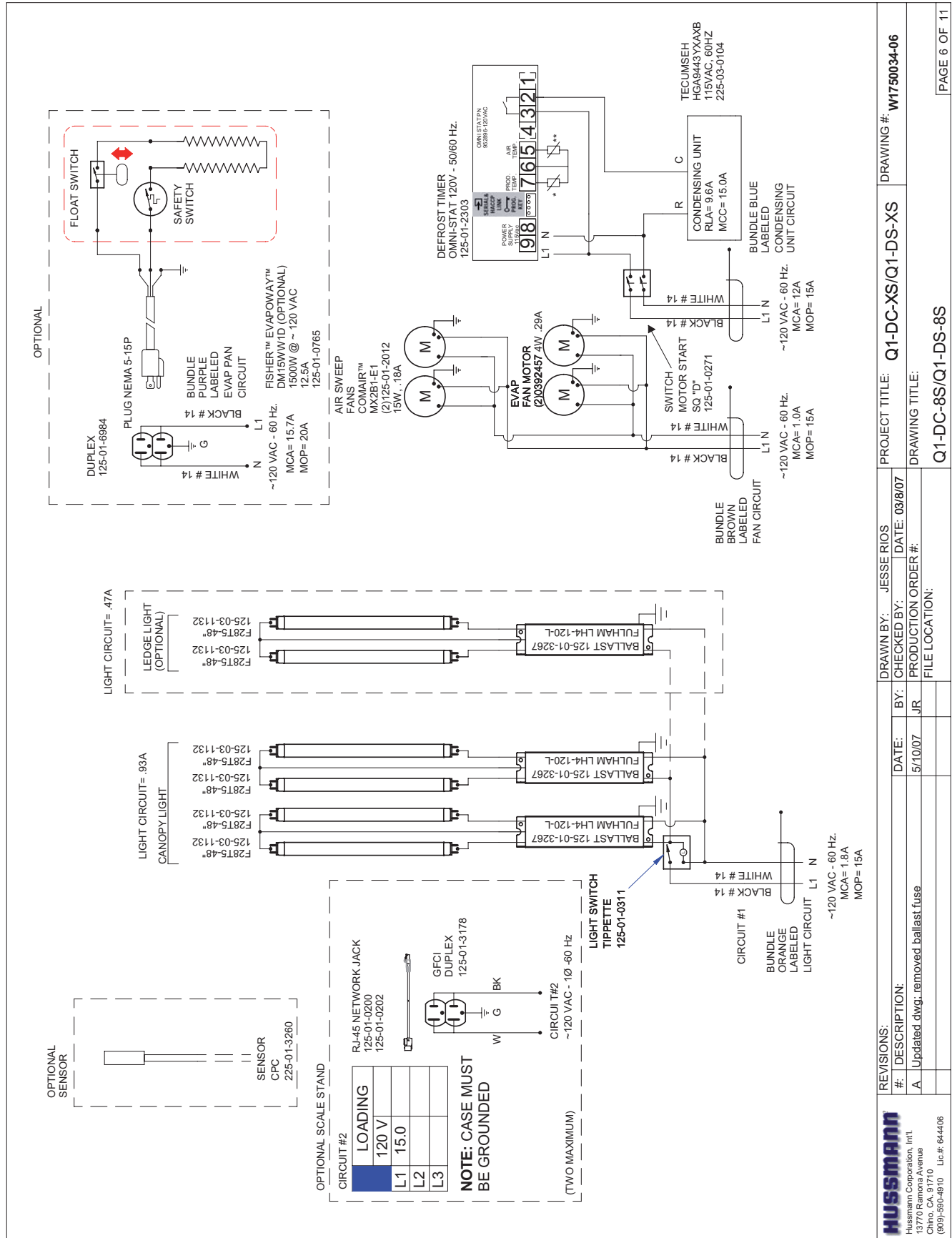






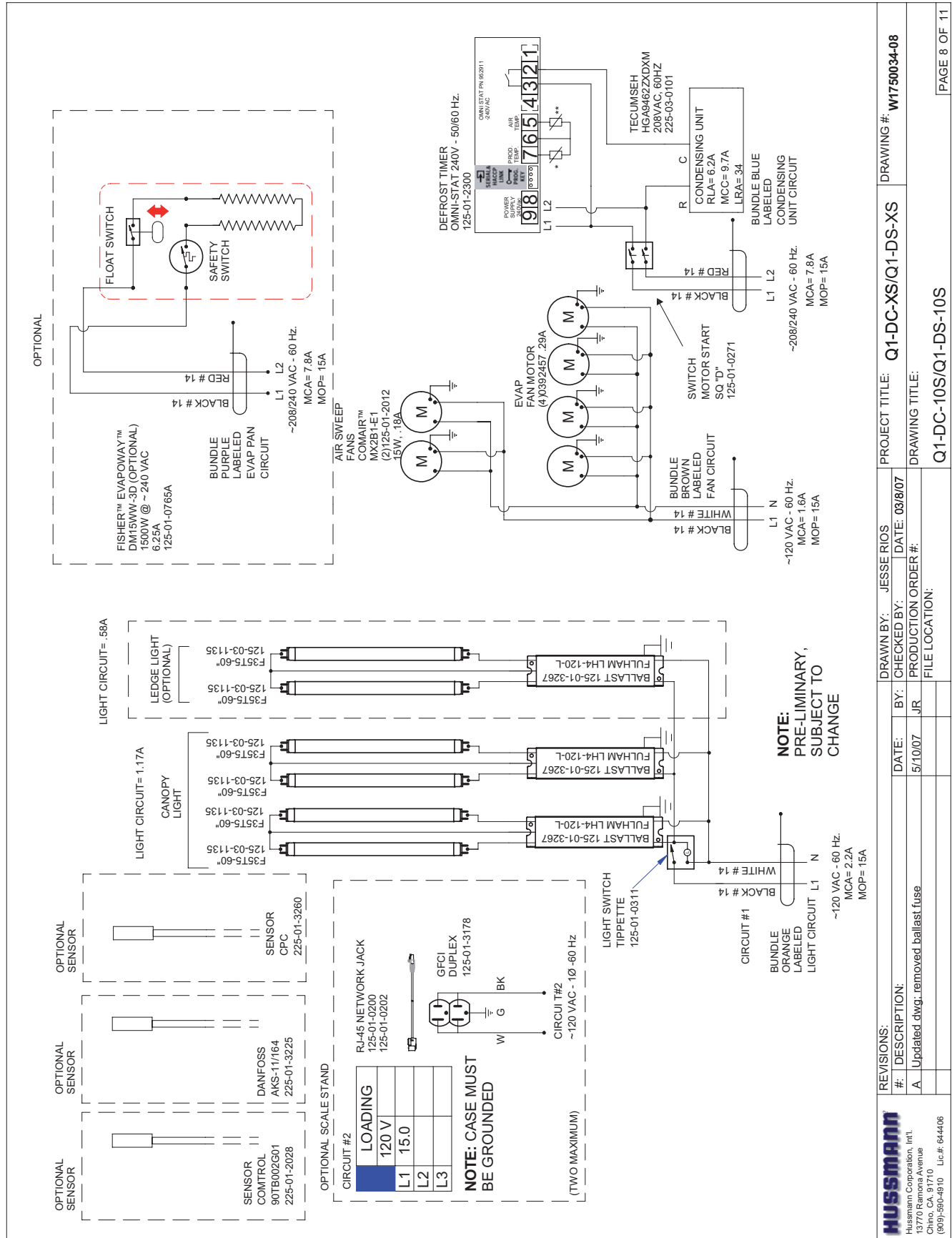


### Wiring Diagrams (Cont'd)





### Wiring Diagrams (Cont'd)



PROJECT TITLE: Q1-DC-XS/Q1-DS-XS  
DRAWING TITLE: Q1-DC-10S/Q1-DS-10S

DATE: 03/08/07  
CHECKED BY: JR  
DATE: 5/10/07  
BY: JR

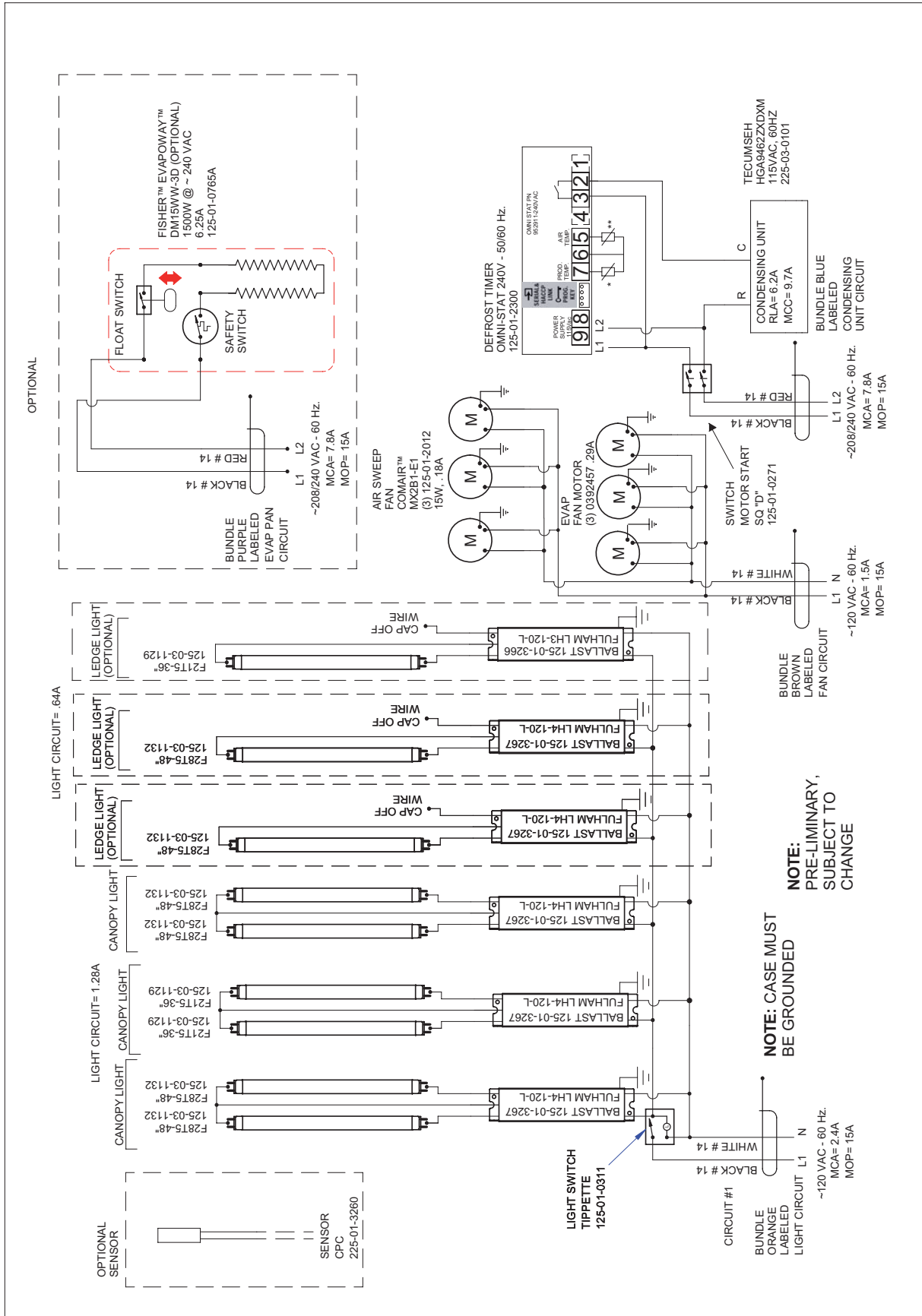
REVISIONS:  
# DESCRIPTION: Updated dwg: removed ballast fuse

DRAWN BY: JESSE RIOS  
FILE LOCATION:

DRAWING #: W1750034-08

PAGE 8 OF 11

Wiring Diagrams (Cont'd)



<b>REVISIONS:</b> # 1 DESCRIPTION: A Updated dwg: removed ballast fuse		DRAWN BY: JESSE RIOS CHECKED BY:	DATE: 03/08/07 DATE: 5/10/07	PROJECT TITLE: Q1-DC-XS/Q1-DS-XS DRAWING #: W1750034-09
FILE LOCATION:		DRAWING TITLE: Q1-DC-11S/Q1-DS-11S		PAGE 9 OF 11

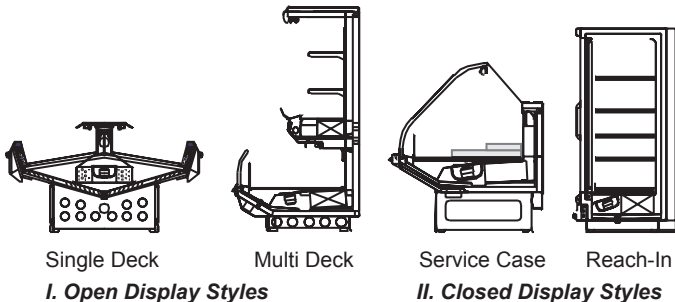


## Appendices

### Appendix A. - Temperature Guidelines - Refrigerated

The refrigerators should be operated according to the manufacturer's published engineering specifications for entering air temperatures for specific equipment applications. Table 1 shows the typical temperature of the air entering the food zone one hour before the start of defrost and one hour after defrost for various categories of refrigerators. Refer to Appendix C for Field Evaluation Guidelines.

Type of Refrigerator	Typical Entering Air Temperature
<b>I. OPEN DISPLAY</b>	
A. Non frozen:	
1) Meat	28°F
2) Dairy/Deli	32°F
3) Produce	
a. Processed	36°F
b. Unprocessed	45°F
B. Frozen	0°F
C. Ice Cream	-5°F
<b>II. CLOSED DISPLAY</b>	
A. Non frozen:	
1) Meat	34°F
2) Dairy/Deli	34°F
3) Produce	
a. Processed	36°F
b. Unprocessed	45°F
B. Frozen	0°F
C. Ice Cream	-5°F



Single Deck

Multi Deck

Service Case

Reach-In

*I. Open Display Styles*

*II. Closed Display Styles*

### Appendix B. - Application Recommendations - Refrigerated

- 1.0 Temperature performance is critical for controlling bacteria growth. Therefore, the following recommendations are included in the standard. They are based on confirmed field experience over many years.
- 1.1 The installer is responsible for following the installation instructions and recommendations provided by Hussmann for the installation of each individual type refrigerator.
- 1.2 Refrigeration piping should be sized according to the equipment manufacturer's recommendations and installed in accordance with normal refrigeration practices. Refrigeration piping should be insulated according to Hussmann's recommendations.

- 1.3 A clogged waste outlet blocks refrigeration. The installer is responsible for the proper installation of the system which dispenses condensate waste through an air gap into the building indirect waste system.
- 1.4 The installer should perform a complete start-up evaluation prior to the loading of food into the refrigerator, which includes such items as:
  - a) Initial temperature performance, Coils should be properly fed with a refrigerant according to manufacturer's recommendations.
  - b) Observation of outside influences such as drafts, radiant heating from the ceiling and from lamps. Such influence should be properly corrected or compensated for.
  - c) At the same time, checks should be made of the store dry-bulb and wet-bulb temperatures to ascertain that they are within the limits prescribed by Hussmann.
  - d) Complete start-up procedures should include checking through a defrost to make certain of its adequate frequency and length without substantially exceeding the actual needs. This should include checking the electrical or refrigerant circuits to make sure that defrosts are correctly programmed for all the refrigerators connected to each refrigeration system.
  - e) Recording instruments should be used to check performance.

### Appendix C. - Field Recommendations - Refrigerated Recommendations for field evaluating the performance of retail food refrigerators and hot cases.

- 1.0 The most consistent indicator of display refrigerator performance is temperature of the air entering the product zone (see Appendix A). In practical use, the precise determination of return air temperature is extremely difficult. Readings of return air temperatures will be variable and results will be inconsistent. The product temperature alone is not an indicator of refrigerator performance.

**NOTE:** Public Health will use the temperature of the product in determining if the refrigerator will be allowed to display potentially hazardous food. For the purpose of this evaluation, product temperature above the FDA Food Code 1993 temperature for potentially hazardous food will be the first indication that an evaluation should be performed. It is expected that all refrigerators will keep food at the FDA Food Code 1993 temperature for potentially hazardous food.



## Appendices (Cont'd)

- 1.1 The following recommendations are made for the purpose of arriving at easily taken and understood data which, coupled with other observations, may be used to determine whether a display refrigerator is working as intended:
- a) **INSTRUMENT** - A stainless steel stem-type thermometer is recommended and it should have a dial a minimum of 1 inch internal diameter. A test thermometer scaled only in Celsius or dually scaled in Celsius and Fahrenheit shall be accurate to 1°C (1.8°F). Temperature measuring devices that are scaled only in Fahrenheit shall be accurate to 2°F. The thermometer should be checked for proper calibration. (It should read 32°F when the stem is immersed in an ice water bath).
  - b) **LOCATION** - The probe or sensing element of the thermometer should be located in the airstream where the air first enters the display or storage area, and not more than 1 inch away from the surface and in the center of the discharge opening.
  - c) **READING** - It should first be determined that the refrigerator is refrigerating and has operated at least one hour since the end of the last defrost period. The thermometer reading should be made only after it has been allowed to stabilize, i.e., maintain a constant reading.
  - d) **OTHER OBSERVATIONS** - Other observations should be made which may indicate operating problems, such as unsatisfactory product, feel/appearance.
  - e) **CONCLUSIONS** - In the absence of any apparent undesirable conditions, the refrigerator should be judged to be operating properly. If it is determined that such condition is undesirable, i.e., the product is above proper temperature, checks should be made for the following:
    1. Has the refrigerator been loaded with warm product?
    2. Is the product loaded beyond the "Safe Load Line" markers?
    3. Are the return air ducts blocked?
    4. Are the entering air ducts blocked?
    5. Is a dumped display causing turbulent air flow and mixing with room air?
    6. Are spotlights or other high intensity lighting directed onto the product?
7. Are there unusual draft conditions (from heating/air-conditioning ducts, open doors, etc.)?
  8. Is there exposure to direct sunlight?
  9. Are display signs blocking or diverting airflow?
  10. Are the coils of the refrigerator iced up?
  11. Is the store ambient over 75°F, 55% RH as set forth in ASHRAE Standard 72 and ASHRAE Standard 117?
  12. Are the shelf positions, number, and size other than recommended by Hussmann?
  13. Is there an improper application or control system?
  14. Is the evaporator fan motor/blade inoperative?
  15. Is the defrost time excessive?
  16. Is the defrost termination, thermostat (if used) set too high?
  17. Are the refrigerant controls incorrectly adjusted?
  18. Is the air entering the condenser above design conditions? Are the condenser fins clear of dirt, dust, etc.?
  19. Is there a shortage of refrigerant?
  20. Has the equipment been modified to use replacements for CFC-12, CFC-502 or other refrigerant? If so, have the modifications been made in accordance with the recommendations of the equipment manufacturer? Is the refrigerator charged with the proper refrigerant and lubricant? Does the system use the recommended compressor?

### Appendix D. - Recommendations to User - Refrigerated

- 1.0 Hussmann Corporation provides instructions and recommendations for proper periodic cleaning. The user will be responsible for such cleaning, including the cleaning of low temperature equipment within the compartment and the cooling coil area(s). Cleaning practices, particularly with respect to proper refrigerator unloading and warm-up, must be in accordance with applicable recommendations.

---

**Appendices (Cont'd)**

- 1.1 Cleaning of non frozen food equipment should include a weekly cleaning of the food compartment as a minimum to prevent bacteria growth from accumulating. Actual use and products may dictate more frequent cleaning. Circumstances of use and equipment design must also dictate the frequency of cleaning the display areas. Weekly washing down of the storage compartment is also recommended, especially for equipment subject to drippage of milk or other liquids, or the collection of vegetable, meat, crumbs, etc. or other debris or litter. Daily cleaning of the external areas surrounding the storage or display compartments with detergent and water will keep the equipment presentable and prevent grime buildup.
- 1.2 Load levels as defined by the manufacturer must be observed.
- 1.3 The best preservation is achieved by following these rules:
  - a) Buy quality products.
  - b) Receive perishables from transit equipment at the ideal temperature for the particular product.
  - c) Expedite perishables to the store's storage equipment to avoid unnecessary warm-up and prolonged temperature recovery. Food store refrigerators are not food chillers nor can they reclaim quality lost through previous mishandling.
  - d) Care must be taken when cross merchandising products to ensure that potentially hazardous vegetable products are not placed in non refrigerated areas.
  - e) Display and storage equipment doors should be kept closed during periods of inactivity.
  - f) Minimize the transfer time of perishables from storage to display.
  - g) Keep meat under refrigeration in meat cutting and processing area except for the few moments it is being handled in processing. When a cut or tray of meat is not to be worked on immediately, the procedure should call for returning it to refrigeration.
  - h) Keep tools clean and sanitized. Since mechanical equipment is used for fresh meat processing, all such equipment should be cleaned at least daily and each time a different kind of meat product comes in contact with the tool or equipment.
  - i) Make sure that all refrigeration equipment is installed and adjusted in strict accordance with the manufacturer's recommendations.
  - j) See that all storage and refrigeration equipment is kept in proper working order by routine maintenance.

---

## Service Record

Last service date:    By:

_____	_____
_____	_____
_____	_____
_____	_____
_____	_____
_____	_____
_____	_____

---

## HUSSmann®/Chino

Additional copies of this publication may be obtained by contacting:

Hussmann® Chino  
13770 Ramona Avenue • Chino, California 91710  
(909) 628-8942 FAX  
(909) 590-4910  
(800) 395-9229

The *MODEL NAME* and *SERIAL NUMBER* is required in order to provide you with the correct parts and information for your particular unit.

They can be found on a small metal plate on the unit. Please note them below for future reference.

**MODEL:**

**SERIAL NUMBER:**

## Free Manuals Download Website

<http://myh66.com>

<http://usermanuals.us>

<http://www.somanuals.com>

<http://www.4manuals.cc>

<http://www.manual-lib.com>

<http://www.404manual.com>

<http://www.luxmanual.com>

<http://aubethermostatmanual.com>

Golf course search by state

<http://golfingnear.com>

Email search by domain

<http://emailbydomain.com>

Auto manuals search

<http://auto.somanuals.com>

TV manuals search

<http://tv.somanuals.com>